

## MOTION CONTROL EXPERT

- Rotary Damper
- Gas Spring
- Linear Damper
- Latch

---

Delight Your Consumers With Amazing Design

# CONTENTS

## 1

### Rotary Damper

- Partial Angle Damper
- Barrel Damper
- Gear Damper
- Others



## 2

### Gas Spring

- Compression Gas Spring
- Lockable Gas Spring



## 3

### Linear Damper

- Active Return Linear Damper
- Passive Return Linear Damper

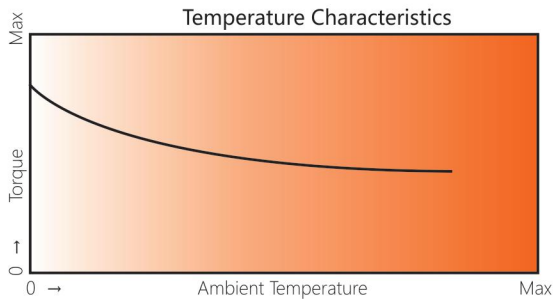


## 4

### Latch

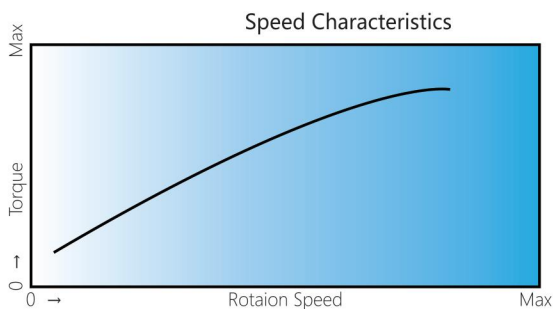


## Temperature & Speed Characteristics



### Temperature Characteristics

The torque of the rotary damper varies according to the temperature. The higher temperature for the lower torque; The lower temperature for the higher torque. When the temperature returns to normal, the damper characteristics will return to normal as well.



### Speed Characteristics

The torque of the rotary damper varies according to rpm. In general, if the rpm goes up, the torque increases; If the rpm goes down, the torque decreases. In addition, please note that the starting torque slightly differs from the rated torque. (The torque value indicated in the product data is measured at the rotation speed of 20r/min)

## Controlled slow closing down.

Shown on the right figure, the flat starts to close down from position of less than 90 to horizon position.

$$T = (W * g) * (L/2) * (\cos a)$$

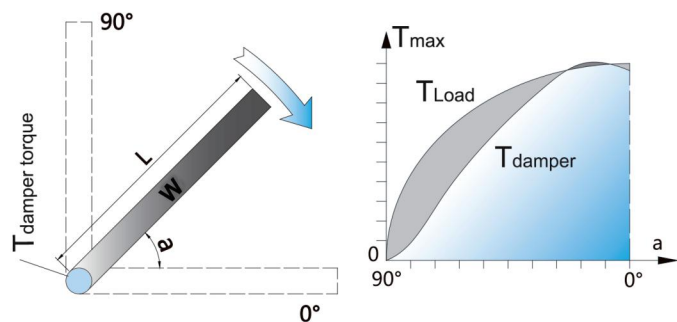
90° ~ 0°

Example:

W=2KG, L=300mm

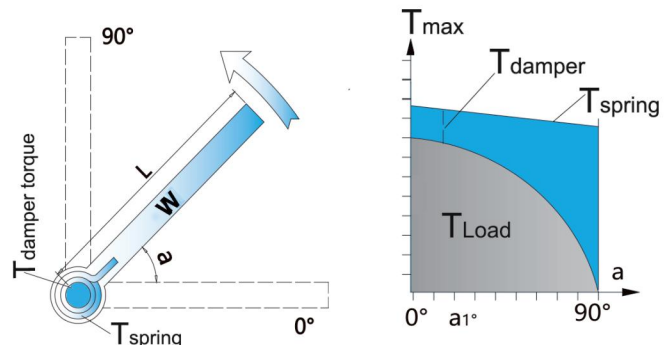
$$T_{max} = (2 * 9.8) * (0.3/2) = 2.94 \text{ Nm}$$

$$T_{damper} = 0 - 3.0 \text{ Nm}$$



## Damper and springs accomplish a task by providing a cushion for impacts.

As the right picture shows, the flat open along the axis when the spring exerts force on it. The graph below shows the relation among spring Force  $T$ , gravity of flat  $W$  and the resistance of rotation of damper:



**0° ~ 90° or Spring coiling movement**

Example:

W=1 KG, L=200mm

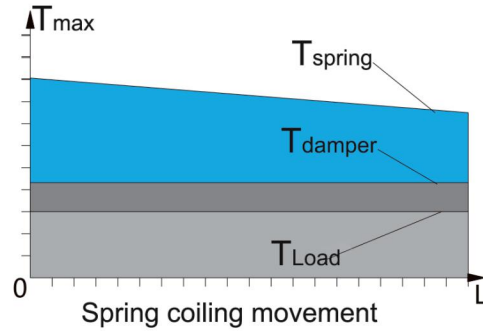
$T_{load} = 1 * 9.8 * (0.2/2) = 0.98Nm$

$T_{spring} = 1.2 \sim 0.5Nm$

$T_{damper} \leq F_{spring} - F_{load}$

$= (1.2 - 0.98)Nm \sim (0.5 - 0)Nm$

$= 0.22 \sim 0.5Nm$



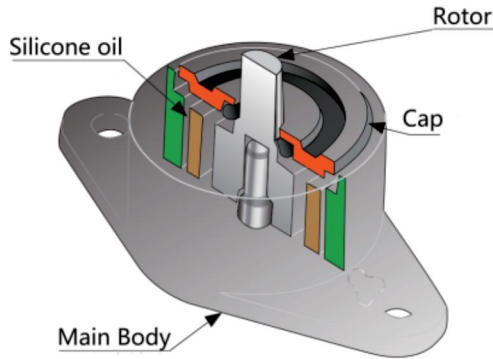
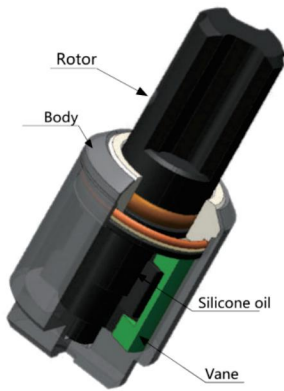
Note:

T: Torque.

L/2: 1/2 the length of the cover from the pivot to the end(Center of gravity).

W: Actual weight of lid.

a : Max angle between the cover and horizontal position.



# Application



BMW 535Li Central Double Armrest  
(FB Series Barrel Damper)



Range Rover EVOQUE sunglass Case  
(CD Series and Push-Push Latch)



Geely Borui Model Glove Box  
(Air Damper)



Skoda kodiaq models curtain  
(DE Series)



Hidden socket



Coffee machine



EV charger



Auto Interior  
(Handle, Sunglass box...)



Kettle



Piano cover



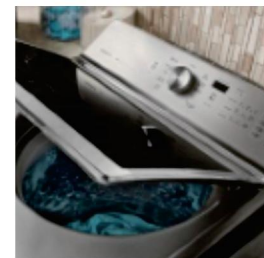
Rice cooker



Sanitary

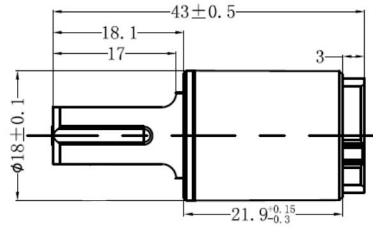
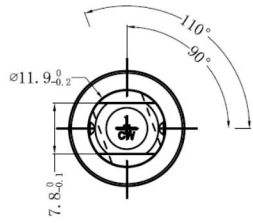


Trash can



Washing machine

Model:PR-T095A



**Torque**

5-55KGF.CM

**Max Opening Angle**

110°

**Static Storage Temperature**

-40°C - 110°C

**Dynamic Working Temperature**

-5°C - 50°C

**Body Material**

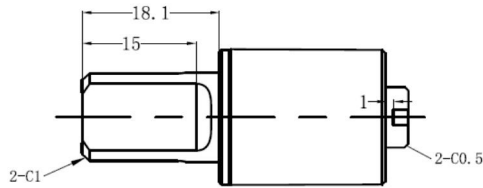
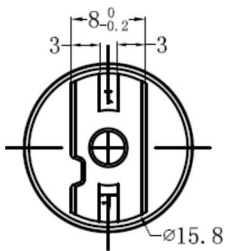
PBT/ PA66

**Shaft Matetial**

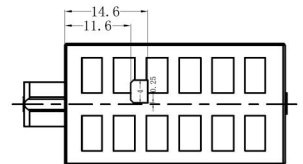
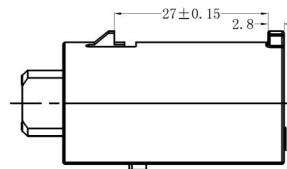
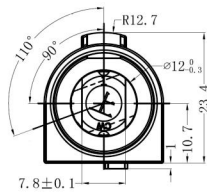
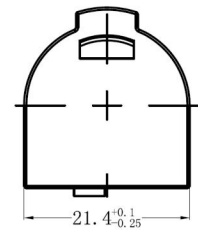
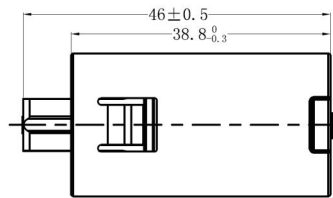
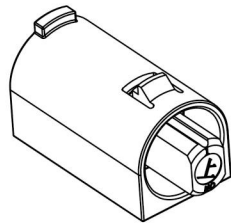
Zinc Alloy

**Oil**

Silicone Oil



Model:PR-T095B



**Torque**

5-55KGF.CM

**Max Opening Angle**

110°

**Static Storage Temperature**

-40°C - 110°C

**Dynamic Working Temperature**

-5°C - 50°C

**Body Material**

PBT

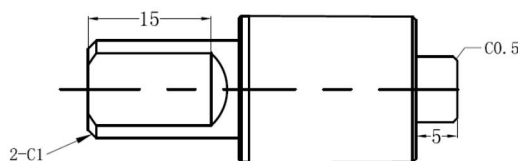
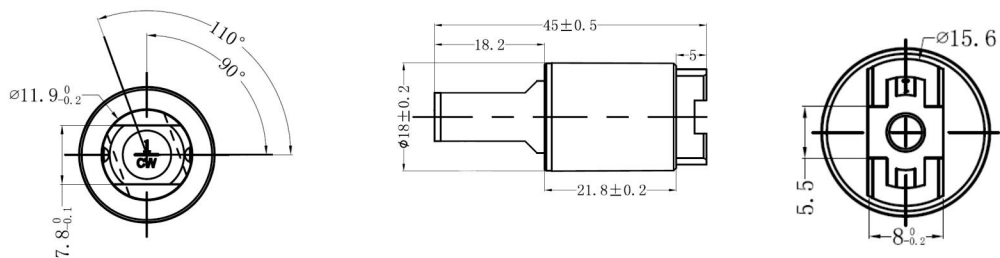
**Shaft Matetial**

PA66/ Zinc Alloy

**Oil**

Silicone Oil

Model:PR-T095C



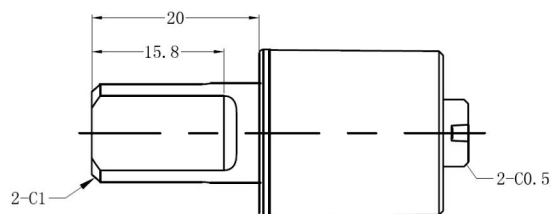
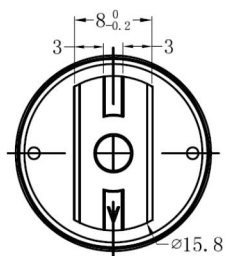
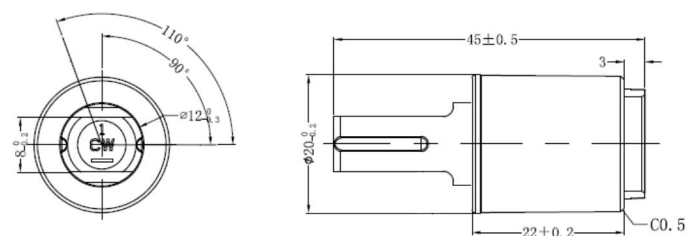
Torque
5-55KGF.CM

Max Opening Angle	Static Storage Temperature	Dynamic Working Temperature	Body Material	Shaft Material	Oil
110°	-40°C - 110°C	-5°C - 50°C	PBT/ PA66	Zinc Alloy	Silicone Oil

Remarks:

Compared with T095C, T095F is different in working angle 0-180°; T095M is of shaft diameter 7.8±0.1mm.

Model:PR-T098D



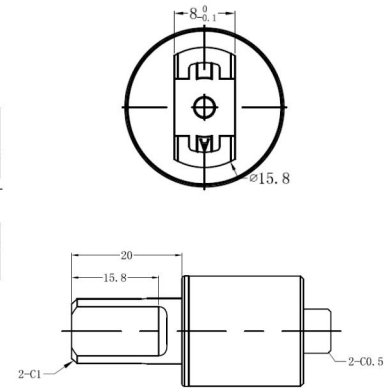
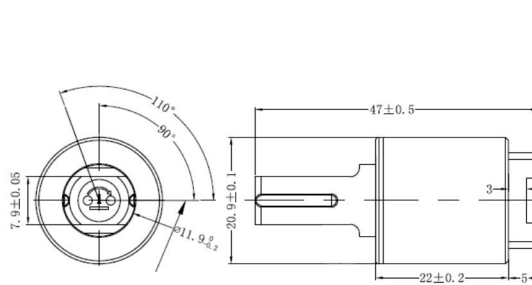
Torque
10-65KGF.CM

Max Opening Angle	Static Storage Temperature	Dynamic Working Temperature	Body Material	Shaft Material	Oil
110°	-40°C - 110°C	-5°C - 50°C	PBT/ PA66	Zinc Alloy	Silicone Oil

Remarks:

Compare with T098D, body diameter of T098A is 19.6mm. The end attachment of T098C is 5mm in height.

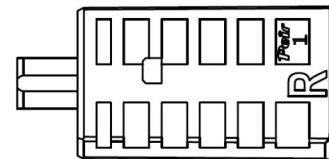
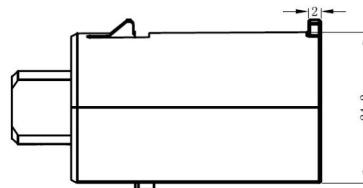
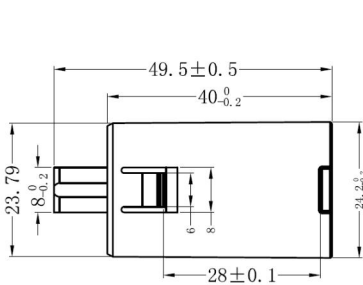
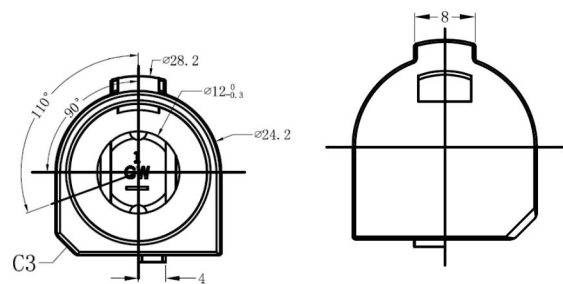
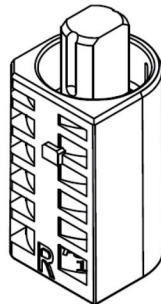
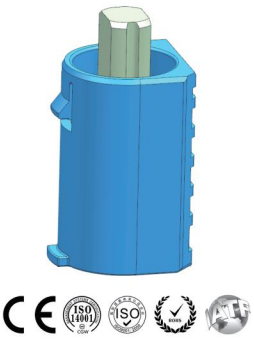
Model:PR-T098E



Torque
10-65KGF.CM

Max Opening Angle	Static Storage Temperature	Dynamic Working Temperature	Body Material	Shaft Matetial	Oil
110°	-40°C - 110°C	-5°C - 50°C	PA66	Zinc Alloy	Silicone Oil

Model:PR-T098H

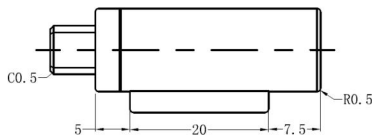
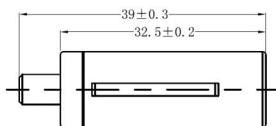
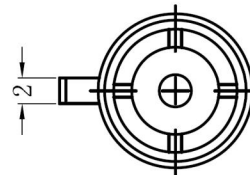
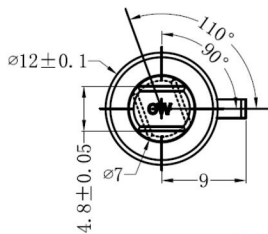
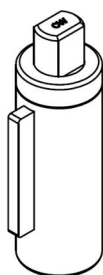


Torque
10-65KGF.CM

Max Opening Angle	Static Storage Temperature	Dynamic Working Temperature	Body Material	Shaft Matetial	Oil
110°	-40°C - 110°C	-5°C - 50°C	POM	Zinc Alloy	Silicone Oil



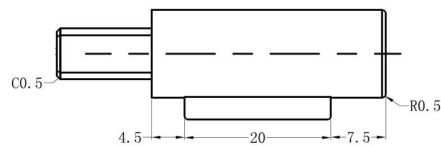
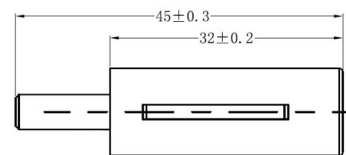
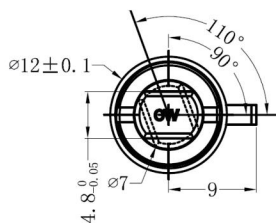
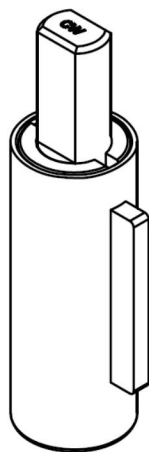
Model:PR-T099B



<b>Torque</b>	3-17KGF.CM
---------------	------------

<b>Max Opening Angle</b>	110°
<b>Static Storage Temperature</b>	-40°C - 110°C
<b>Dynamic Working Temperature</b>	-5°C - 50°C
<b>Body Material</b>	PA66
<b>Shaft Matetial</b>	Zinc Alloy
<b>Oil</b>	Silicone Oil

Model:PR-T099C



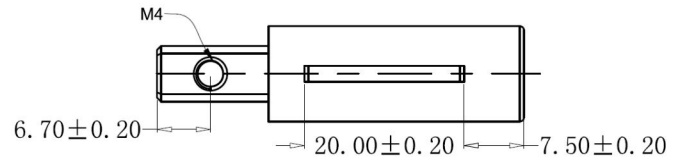
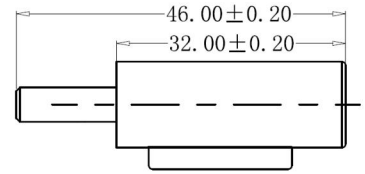
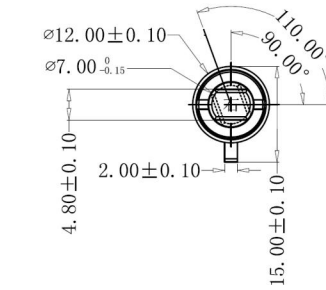
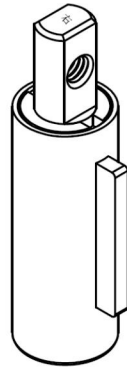
<b>Torque</b>
10-55KGF.CM

Max Opening Angle	Static Storage Temperature	Dynamic Working Temperature	Body Material	Shaft Matetial	Oil
110°	-40°C - 110°C	-20°C - 80°C	Zinc Alloy	Zinc Alloy	Silicone Oil

Remarks:

Compared with T099C, the shaft of T099A is shorter, 7mm in length; T099Q is based on C, only special with R angle on rib.

Model:PR-T099E



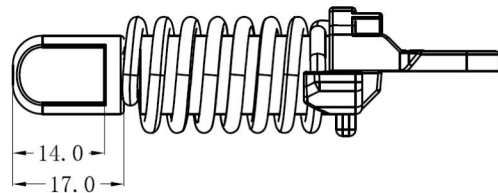
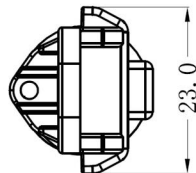
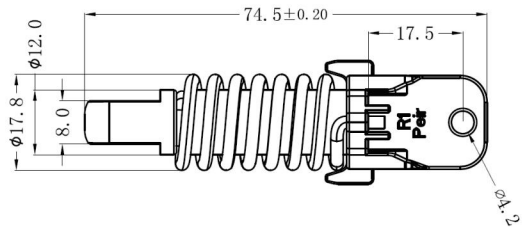
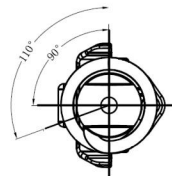
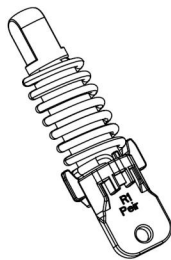
Torque
10-55KGF.CM

Max Opening Angle	Static Storage Temperature	Dynamic Working Temperature	Body Material	Shaft Matetial	Oil
110°	-40°C - 110°C	-20°C - 80°C	Zinc Alloy	Zinc Alloy	Silicone Oil

Remarks:

Compared with T099E, the shaft length of T099D is different, with size  $12 \pm 0.2\text{mm}$ ; T099N is different in working angle,  $0-100^\circ$ ; T099R is different in the position of threaded hole.

Model:PR-T099G

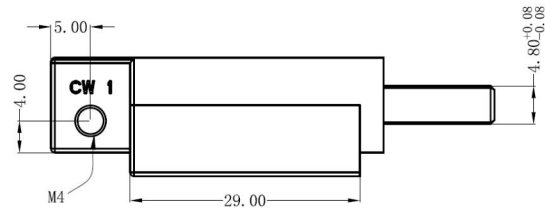
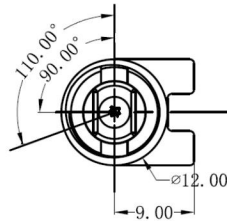
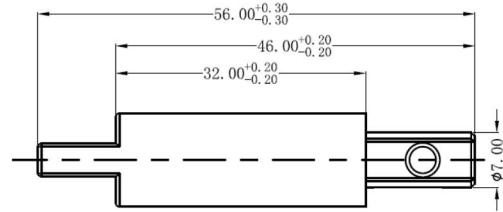
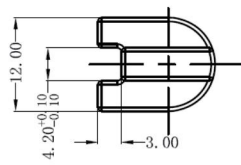
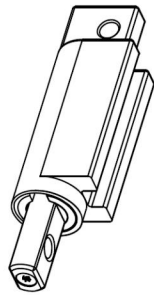


Torque
10-55KGF.CM

Max Opening Angle	Static Storage Temperature	Dynamic Working Temperature	Body Material	Shaft Matetial	Oil
110°	-40°C - 110°C	-20°C - 80°C	Zinc Alloy	Zinc Alloy	Silicone Oil

Spring
Music Wire 9.25

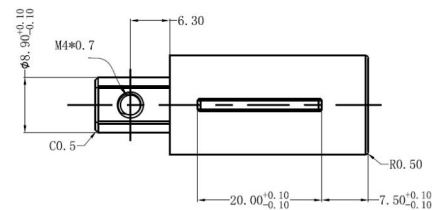
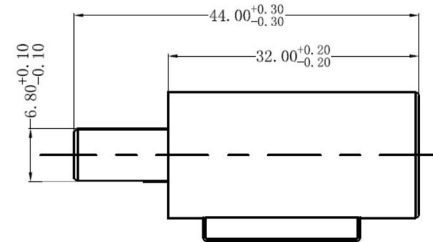
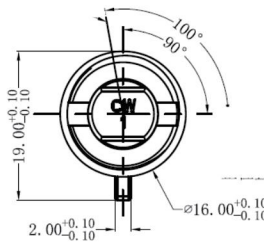
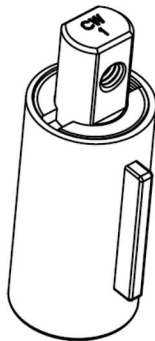
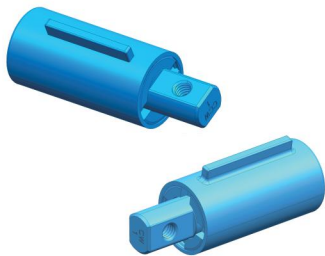
Model:PR-T099K



Torque
10-55KGF.CM

Max Opening Angle	Static Storage Temperature	Body Material	Shaft Material	Oil
110°	-20°C - 80°C	Zinc Alloy	Zinc Alloy	Silicone Oil

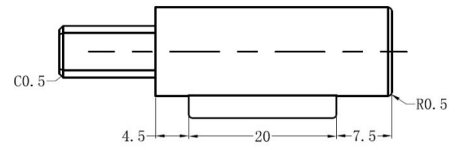
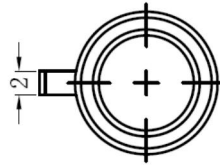
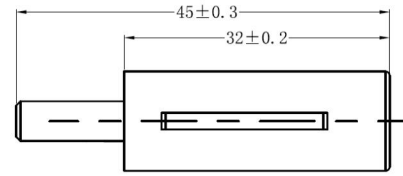
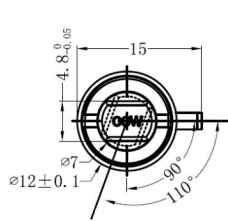
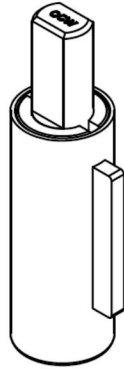
Model:PR-T099M



Torque
10-55KGF.CM

Max Opening Angle	Static Storage Temperature	Dynamic Working Temperature	Body Material	Shaft Material	Oil
110°	-40°C - 110°C	-20°C - 80°C	Zinc Alloy	Zinc Alloy	Silicone Oil

Model:PR-T099S

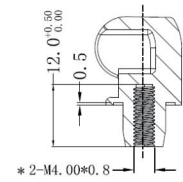
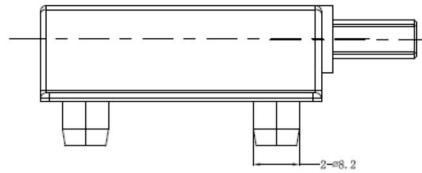
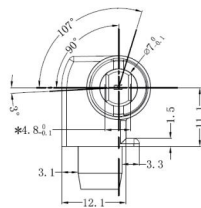
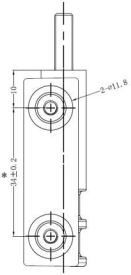
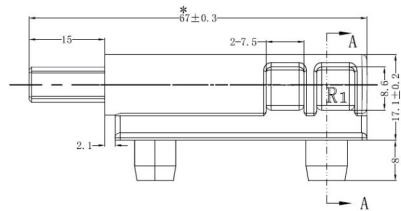
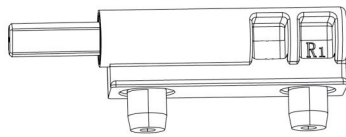


**Torque**

10-25KGF.CM

Max Opening Angle	Static Storage Temperature	Dynamic Working Temperature	Body Material	Shaft Matetial	Oil
110°	-40°C - 110°C	-20°C - 80°C	Zinc Alloy	Zinc Alloy	Silicone Oil

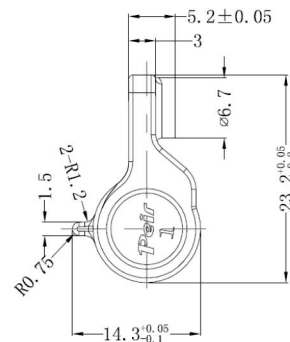
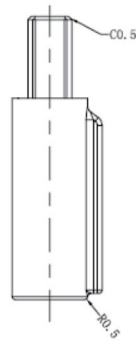
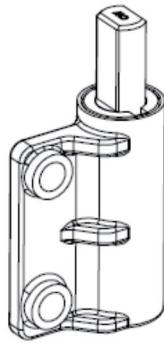
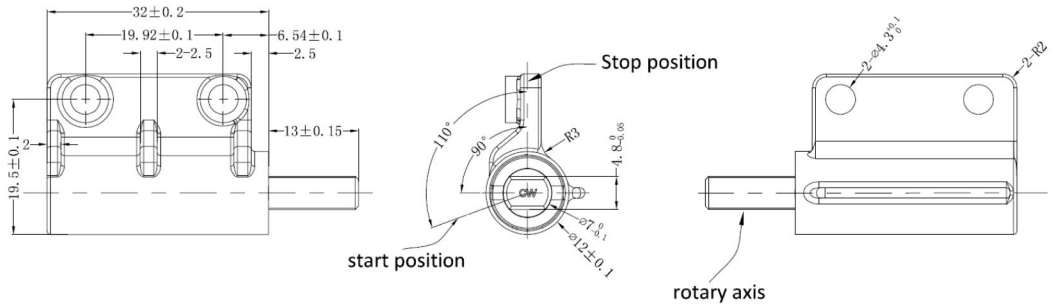
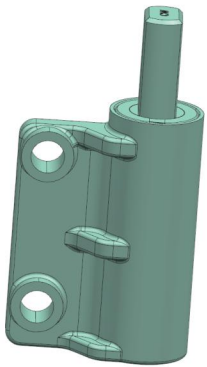
Model:PR-T099T



SECTION A-A

Torque	Max Opening Angle	Static Storage Temperature	Body Material	Shaft Matetial	Oil
10-55KGF.CM	107°	-20°C - 80°C	Zinc Alloy	Zinc Alloy	Silicone Oil

Model:PR-T099W

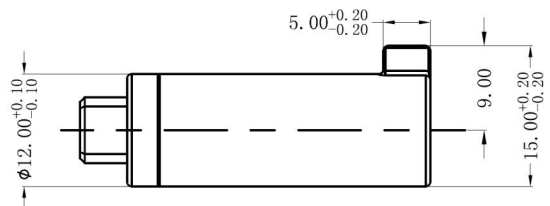
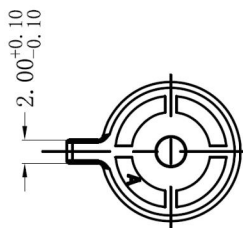
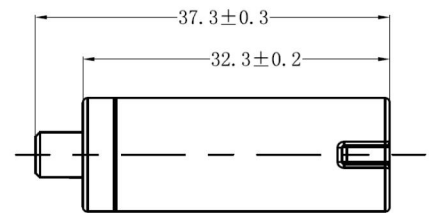
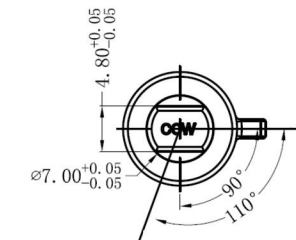
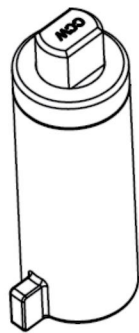


Torque

10-55KGF.CM

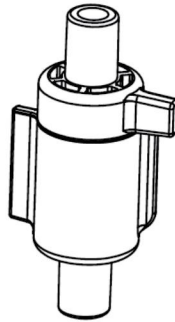
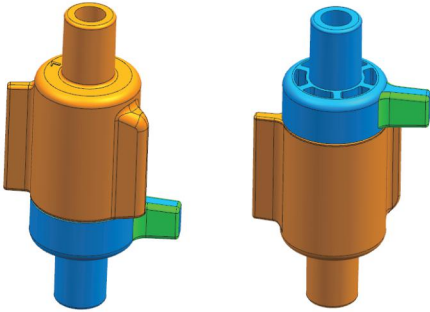
Max Opening Angle	Static Storage Temperature	Body Material	Shaft Material	Oil
110°	-20°C - 80°C	Zinc Alloy	Zinc Alloy	Silicone Oil

Model:PR-T099H

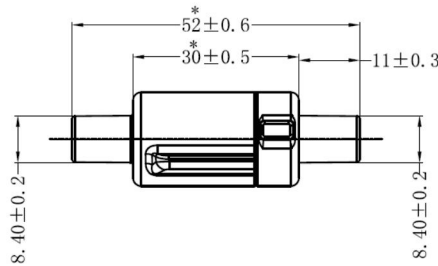
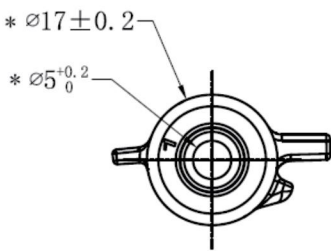


Torque	Max Opening Angle	Static Storage Temperature	Body Material	Shaft Material	Oil
3-17KGF.CM	110°	-5°C - 50°C	PA66	Zinc Alloy	Silicone Oil

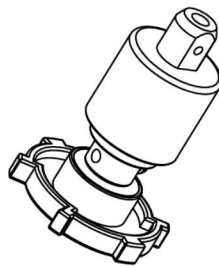
Model:PR-T051A



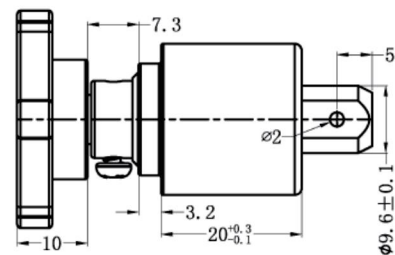
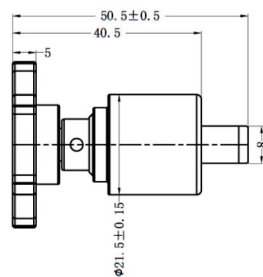
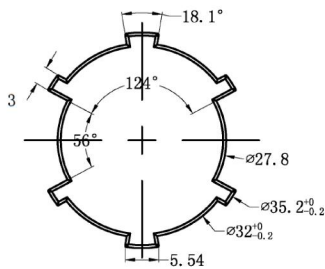
<b>Torque</b>	2000-5000GF.CM
<b>Static Storage Temperature</b>	-40°C - 110°C
<b>Dynamic Working Temperature</b>	-5°C - 50°C
<b>Body Material</b>	PA66 Gray
<b>Shaft Matetial</b>	PA66 Gray
<b>Oil</b>	Silicone Oil



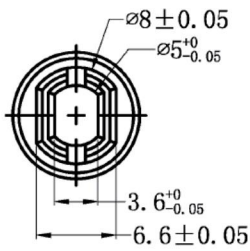
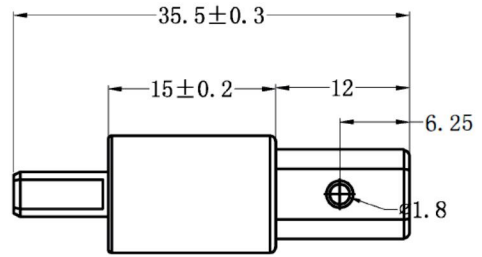
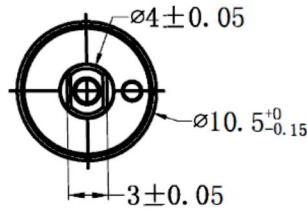
Model:PR-T058A



<b>Torque</b>	500-3000GF.CM
<b>Static Storage Temperature</b>	-40°C - 110°C
<b>Dynamic Working Temperature</b>	-5°C - 50°C
<b>Body Material</b>	PC
<b>Shaft Matetial</b>	POM
<b>Oil</b>	Silicone Oil

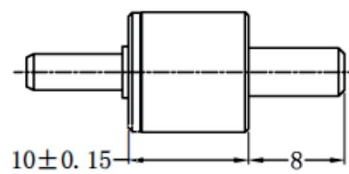
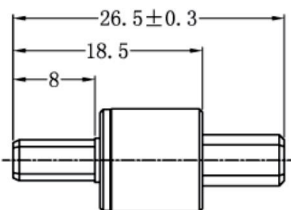
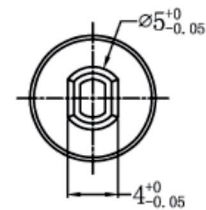
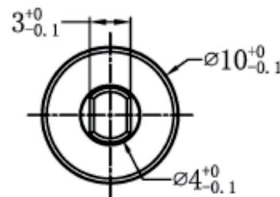


Model:PR-T060A



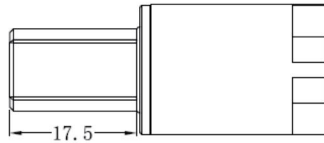
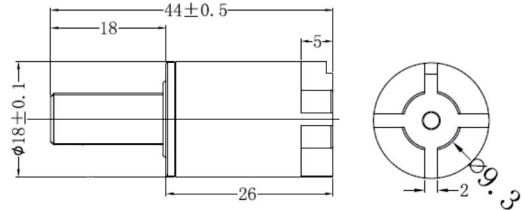
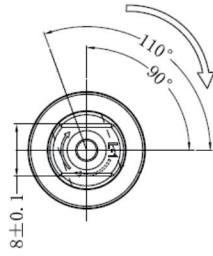
<b>Torque</b>	80-300GF.CM
<b>Static Storage Temperature</b>	-40°C - 110°C
<b>Dynamic Working Temperature</b>	-5°C - 50°C
<b>Body Material</b>	PC
<b>Shaft Matetial</b>	POM
<b>Oil</b>	Silicone Oil

Model:PR-T065A



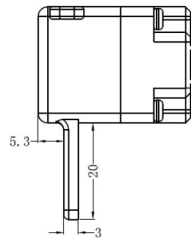
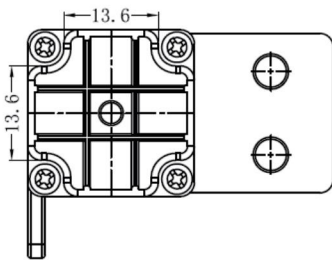
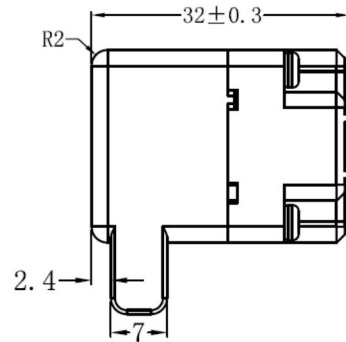
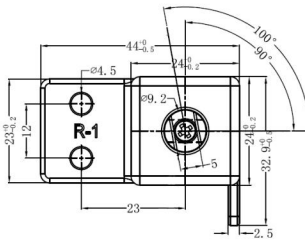
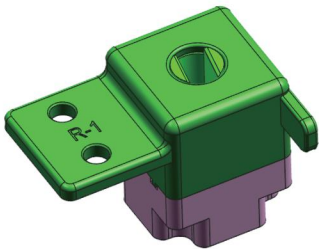
<b>Torque</b>	80-300GF.CM
<b>Static Storage Temperature</b>	-5°C - 50°C
<b>Body Material</b>	PC
<b>Shaft Matetial</b>	POM
<b>Oil</b>	Silicone Oil

Model:PR-T086A



<b>Torque</b>	10-50KGF.CM
<b>Max Opening Angle</b>	110°
<b>Static Storage Temperature</b>	-40°C - 110°C
<b>Dynamic Working Temperature</b>	-5°C - 50°C
<b>Body Material</b>	PBT
<b>Shaft Matetial</b>	Zinc Alloy
<b>Oil</b>	Silicone Oil

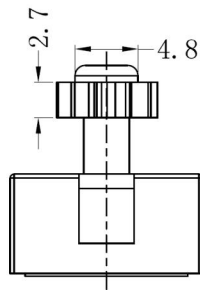
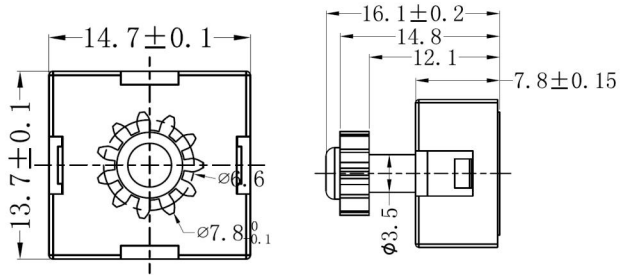
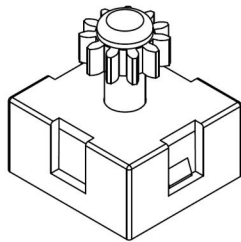
Model:PR-T093A



<b>Torque</b>	15-30KGF.CM
<b>Max Opening Angle</b>	100°
<b>Static Storage Temperature</b>	-40°C - 110°C
<b>Dynamic Working Temperature</b>	-5°C - 50°C
<b>Body Material</b>	PA66
<b>Shaft Matetial</b>	PA66
<b>Oil</b>	Silicone Oil

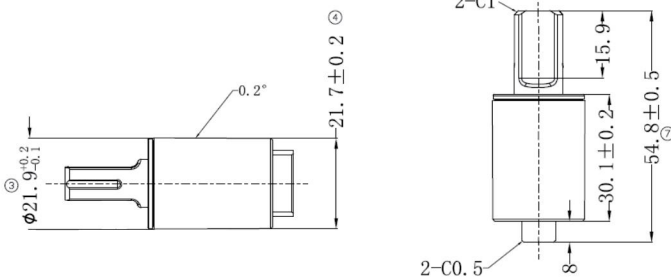
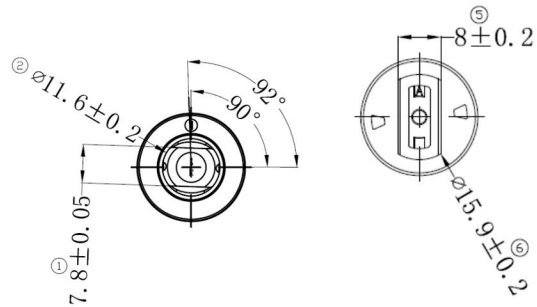
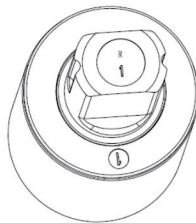


Model:PR-T096A



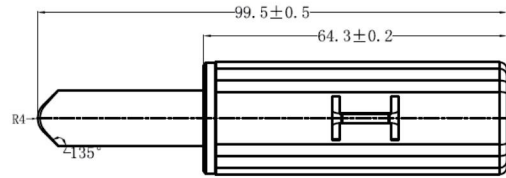
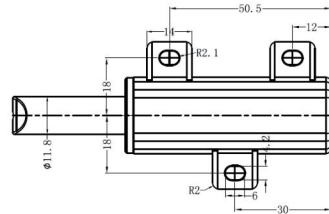
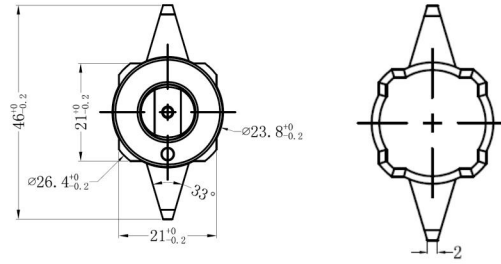
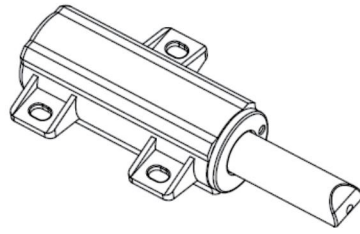
<b>Torque</b>	30-100GF.CM
<b>Static Storage Temperature</b>	-40°C - 110°C
<b>Dynamic Working Temperature</b>	-5°C - 50°C
<b>Body Material</b>	POM
<b>Gear Material</b>	POM
<b>Shaft Matetial</b>	POM
<b>Oil</b>	Silicone Oil

Model:PR-T097A



<b>Torque</b>	30-100KGF.CM
<b>Max Opening Angle</b>	92°
<b>Static Storage Temperature</b>	-40°C - 110°C
<b>Dynamic Working Temperature</b>	-5°C - 50°C
<b>Body Material</b>	PA66
<b>Shaft Matetial</b>	Zinc Alloy
<b>Oil</b>	Silicone Oil

Model:PR-T105

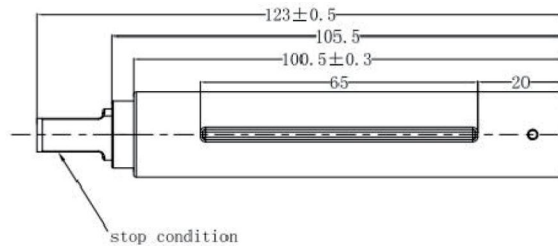
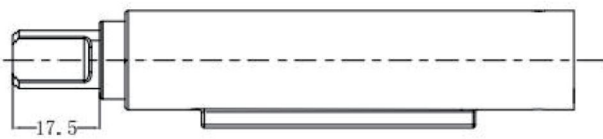
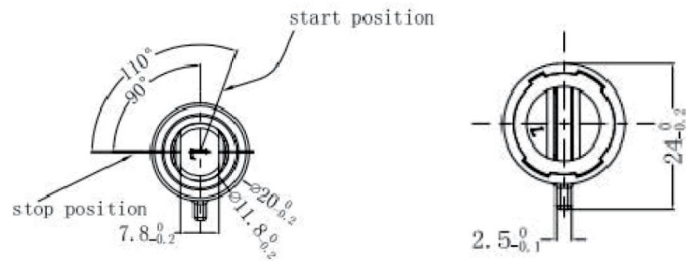


**Torque**

20-55KGF.CM

Static Storage Temperature	Dynamic Working Temperature	Compression Stroke	Body Material	Shaft Matetial	Oil
-40°C - 110°C	-5°C - 50°C	25MM	PA66	PBT	Silicone Oil

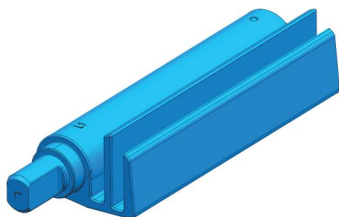
Model:PR-T115A



**Torque**

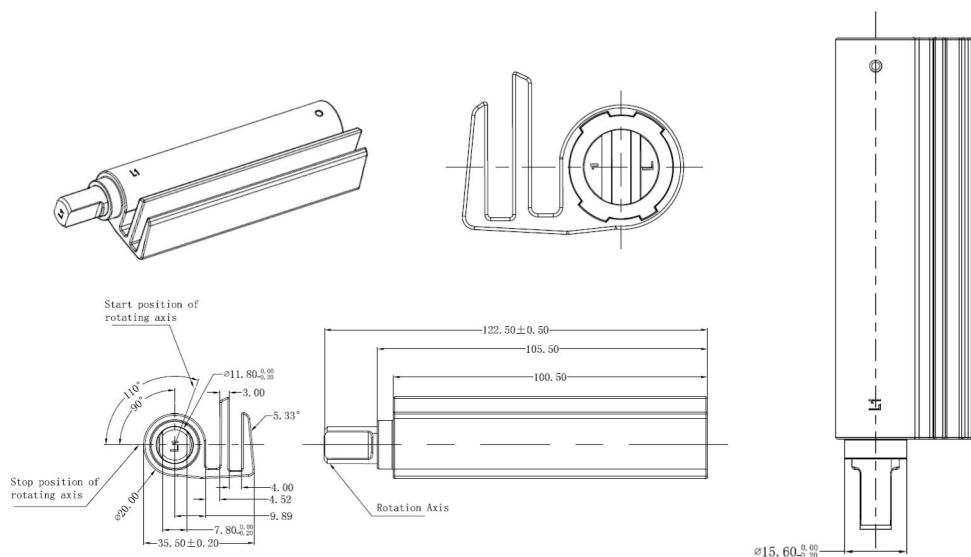
20-80KGF.CMM

Model:PR-T115B



Torque

20-80KGF.CM



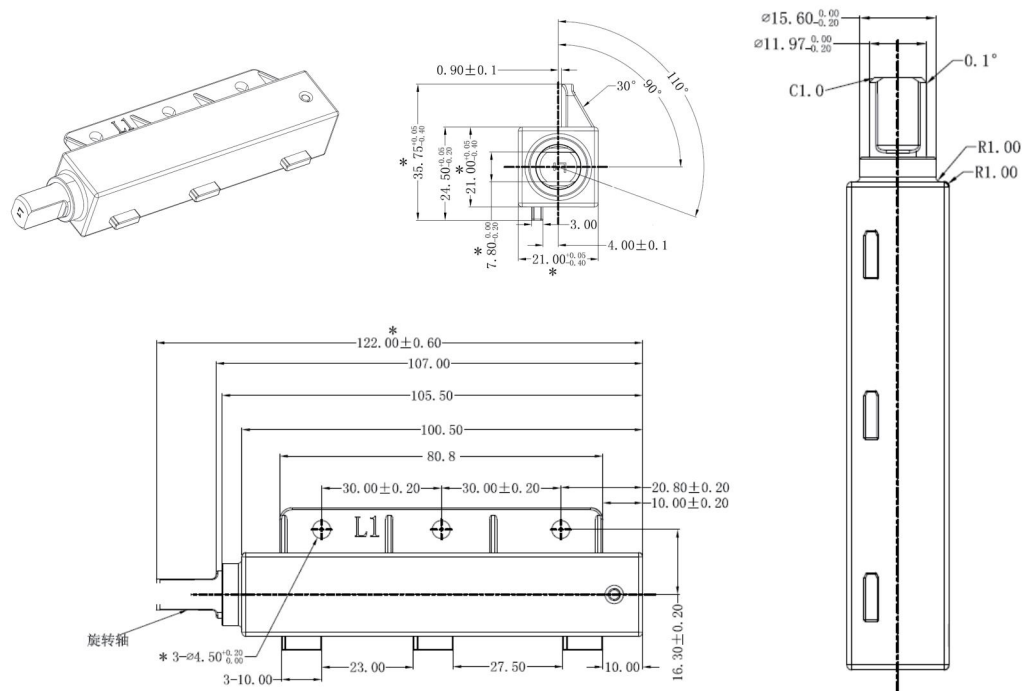
Max Opening Angle	Min Opening Angle	Static Storage Temperature	Body Material	Shaft Material	Damping Medium
110°	≤20°	-20°C - 60°C	Zinc Alloy	PA66 - GF40	Silicone Oil and Spring

Model:PR-T115G



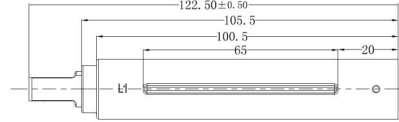
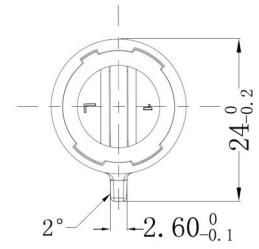
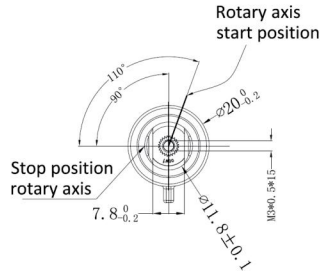
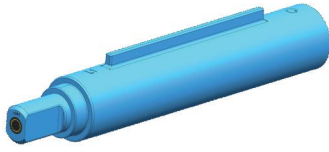
Torque

20-60KGF.CM



Max Opening Angle	Min Opening Angle	Static Storage Temperature	Body Material	Shaft Material	Damping Medium
110°	≤20°	-20°C - 60°C	POM	PA66 - GF40	Silicone Oil and Spring

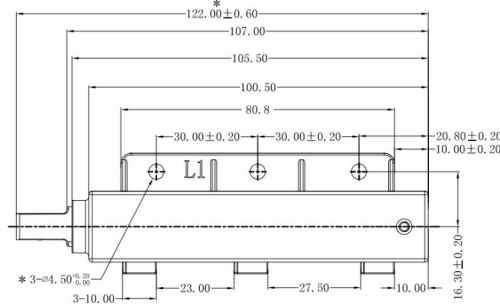
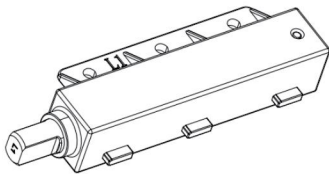
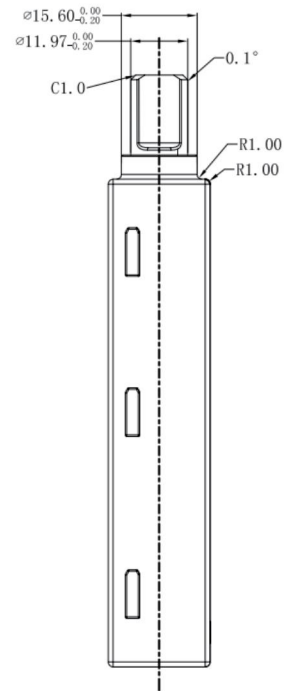
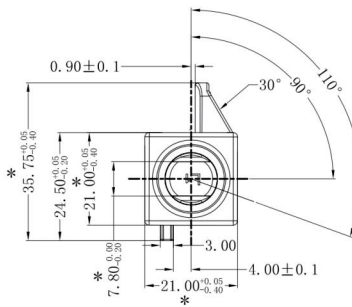
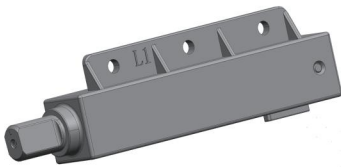
Model:PR-T115H



Torque
20-80KGF.CM

Max Opening Angle	Static Storage Temperature	Body Material	Shaft Material	Damping Medium
110°	-5°C - 50°C	Zinc Alloy	PA66 - GF40	Silicone Oil and Spring

Model:PR-T115M



Torque
20-60KGF.CM

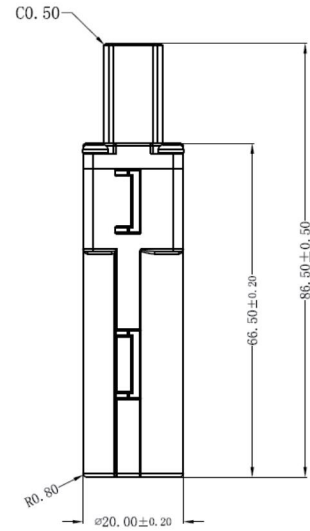
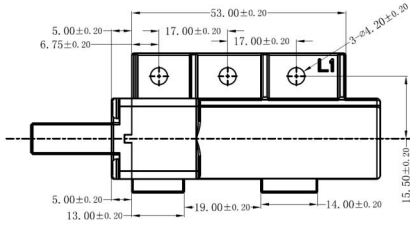
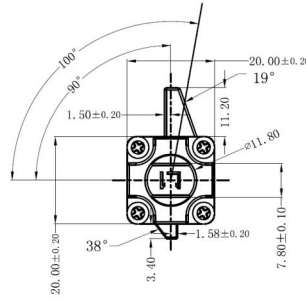
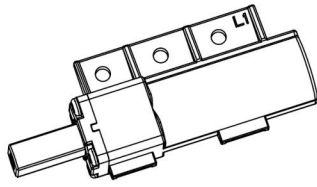
Max Opening Angle	Min Opening Angle	Static Storage Temperature	Body Material	Shaft Material	Damping Medium
110°	≤20°	-20°C - 60°C	POM	PA66 - GF40	Silicone Oil and Spring

Model:PR-T117A



Torque

40-90KGF.CM



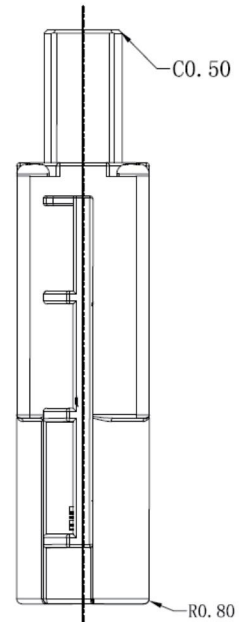
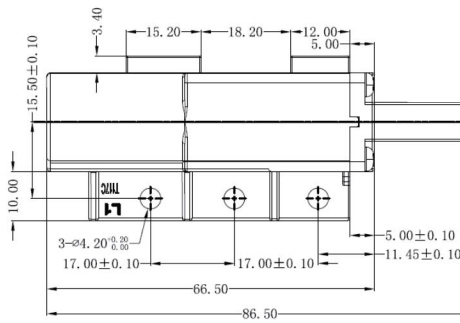
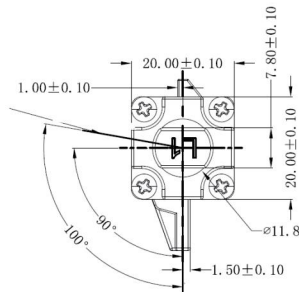
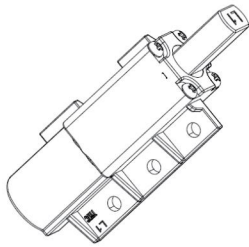
Max Opening Angle	Static Storage Temperature	Body Material	Shaft Material	Oil
100°	-20°C - 70°C	Zinc Alloy	Zinc Alloy	Silicone Oil

Model:PR-T117C



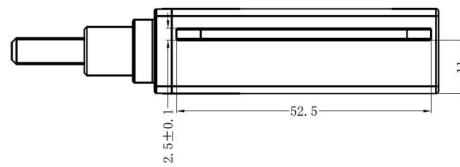
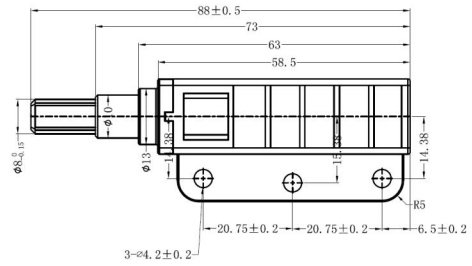
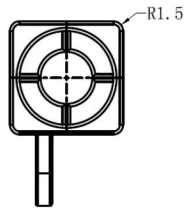
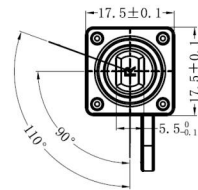
Torque

40-90KGF.CM



Max Opening Angle	Static Storage Temperature	Body Material	Shaft Material	Hovering Medium
100°	-20°C - 70°C	Zinc Alloy	Zinc Alloy	Spring(SWP-B)

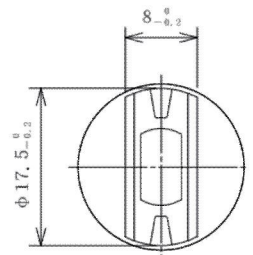
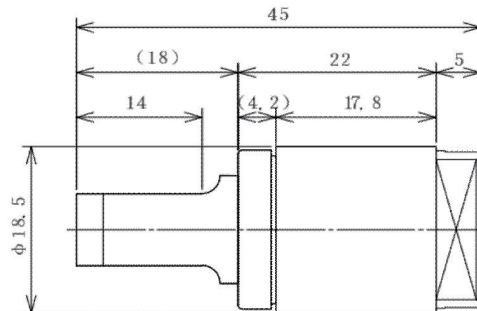
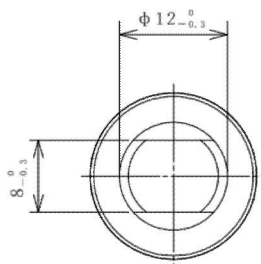
Model:PR-T118A



Torque
10-50KGF.CM

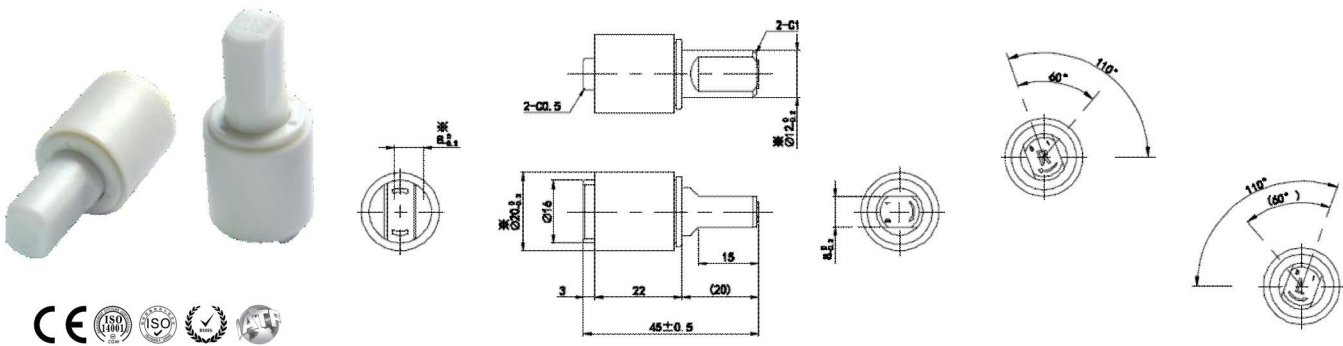
Max Opening Angle	Static Storage Temperature	Dynamic Working Temperature	Body Material	Shaft Matetial	Oil
110°	-40°C - 110°C	-5°C - 50°C	PA66 - GF40	Zinc Alloy	Silicone Oil

Model:PR-DK002



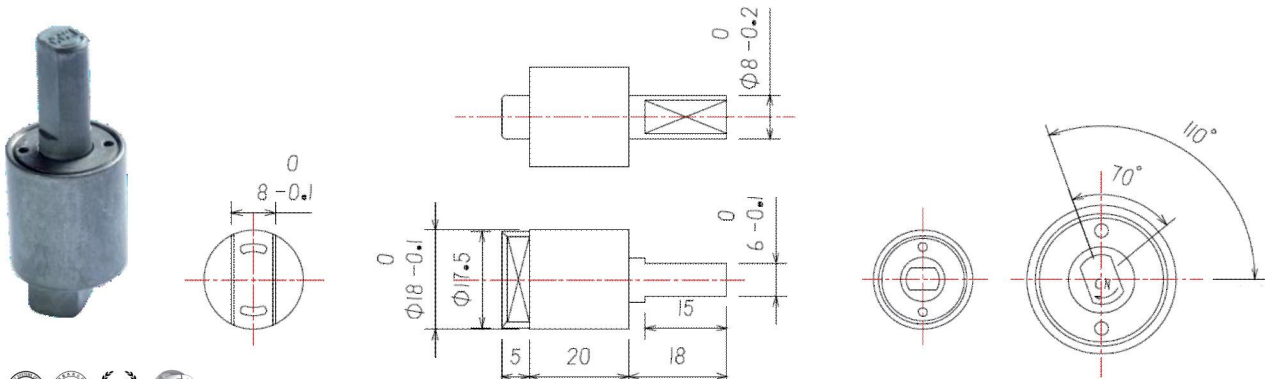
Max Opening Angle	Static Storage Temperature	Body Material	Shaft Matetial	Oil	Torque
115°	-5°C - 50°C	PBT	PBT	Silicone Oil	1-1.8Nm

Model:PR-DK003



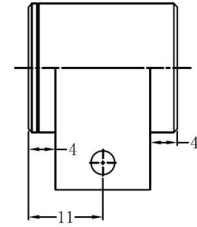
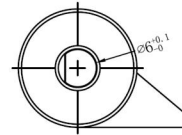
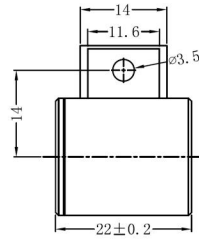
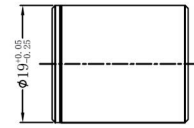
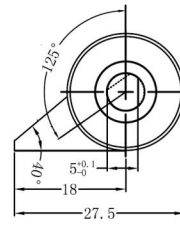
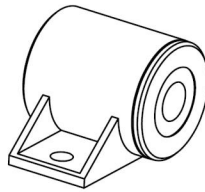
Max Opening Angle	Static Storage Temperature	Body Material	Shaft Material	Oil	Closing Time at 1.96N
110°	0°C - 40°C	PBT+GF	POM+GF	Silicone Oil	5-15S

Model:PR-DK006



<b>Torque</b>	1.47 - 2.94Nm
<b>Closing Time</b>	3-10 sec
<b>Life Cycle</b>	500,000 cycles

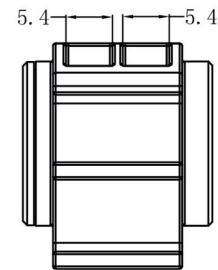
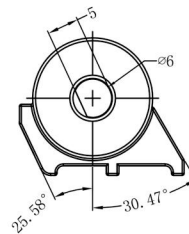
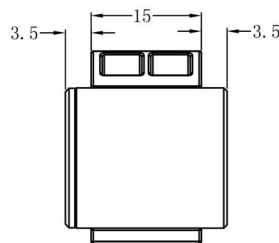
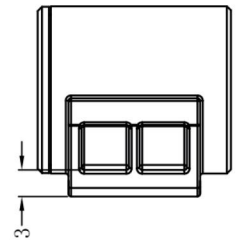
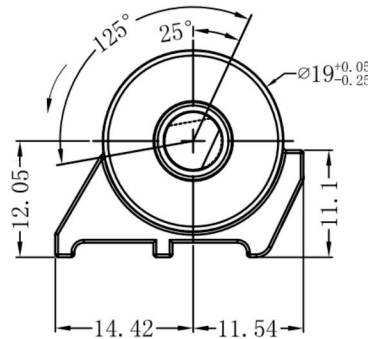
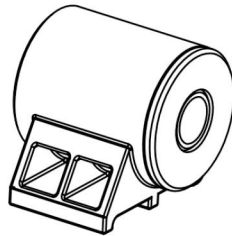
Model:PR-T021A



**Torque** 5-23KGF.CM

Static Storage Temperature	Dynamic Working Temperature	Body Material	Shaft Matetial	Oil
-40°C-110°C	-5°C-50°C	PA66	Zinc Alloy	Silicone Oil

Model:PR-T021B

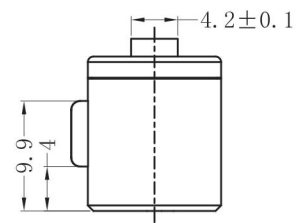
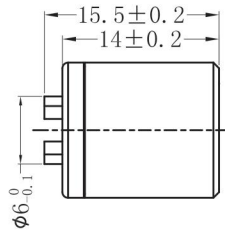
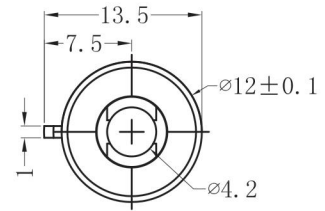


**Torque** 5-23KGF.CM

Static Storage Temperature	Dynamic Working Temperature	Body Material	Shaft Matetial	Oil
-40°C-110°C	-5°C-50°C	PA66	Zinc Alloy	Silicone Oil



Model:PR-T022B



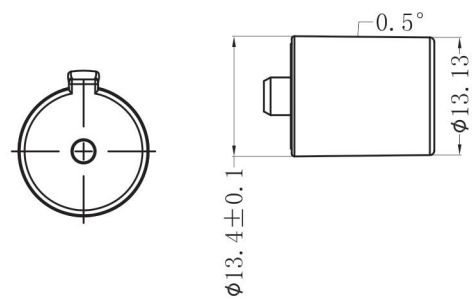
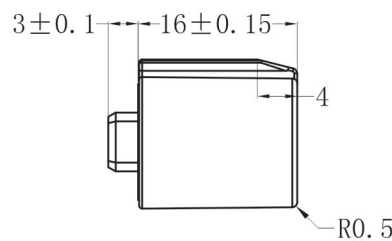
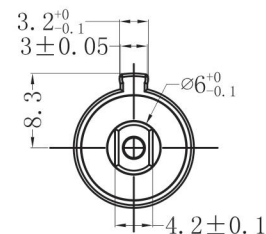
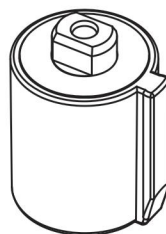
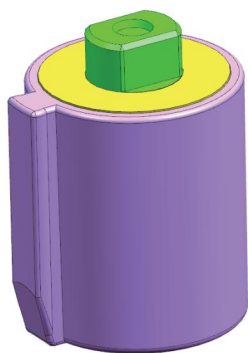
**Torque** 200-1000gf.cm

Static Storage Temperature	Dynamic Working Temperature	Body Material	Shaft Material	Oil
-40°C-110°C	-5°C-50°C	PC	POM	Silicone Oil

Remarks:

PC or POM material is alternative. Model T022F is available with the rib size 1.5mm

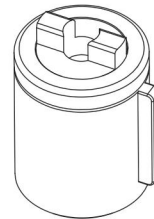
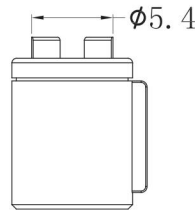
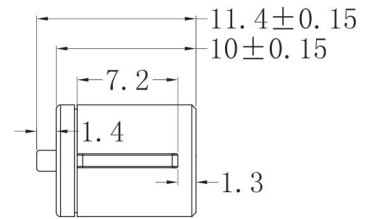
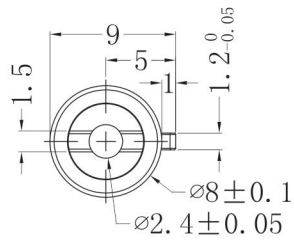
Model:PR-T025



**Torque** 500-5000gf.cm

Static Storage Temperature	Dynamic Working Temperature	Body Material	Shaft Material	Oil
-40°C-110°C	-5°C-50°C	PC	POM	Silicone Oil

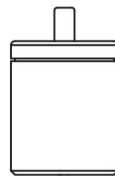
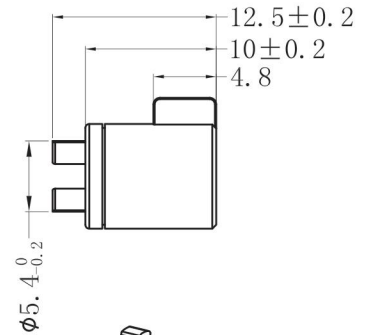
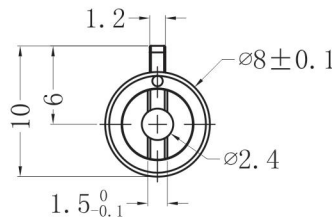
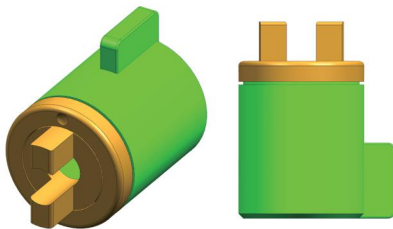
Model:PR-T026A



**Torque** 80-350gf.cm

Static Storage Temperature	Dynamic Working Temperature	Body Material	Shaft Matetial	Oil
-40°C-110°C	-5°C-50°C	PC	POM	Silicone Oil

Model:PR-T026B



**Torque** 80-350gf.cm

Static Storage Temperature	Dynamic Working Temperature	Body Material	Shaft Matetial	Oil
-40°C-110°C	-5°C-50°C	PC	POM	Silicone Oil

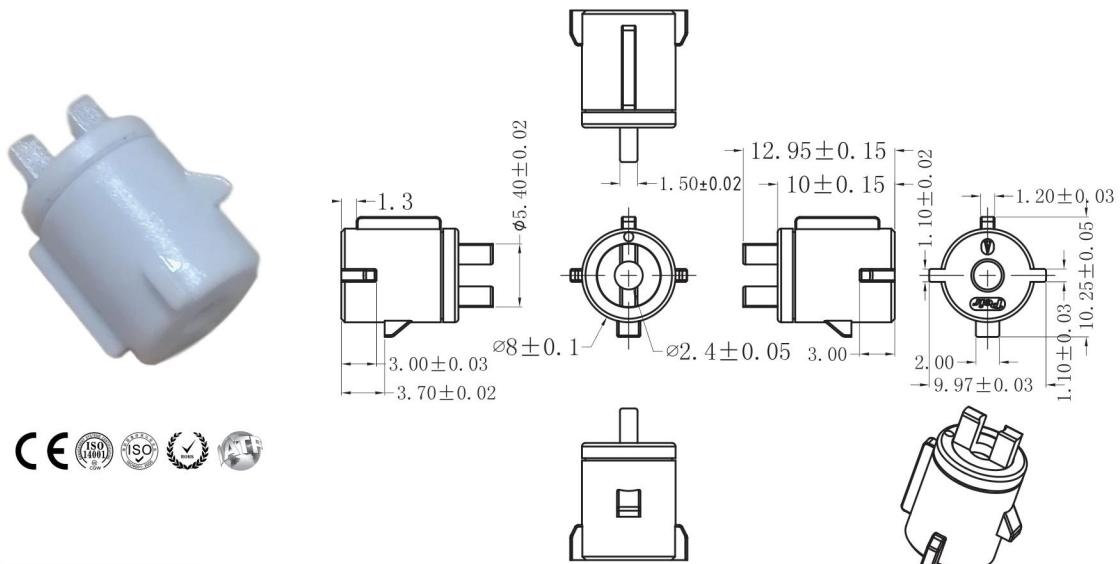
Model:PR-T026C



**Torque** 80-350gf.cm

Static Storage Temperature	Dynamic Working Temperature	Body Material	Shaft Material	Oil
-40°C-110°C	-5°C-50°C	PC	POM	Silicone Oil

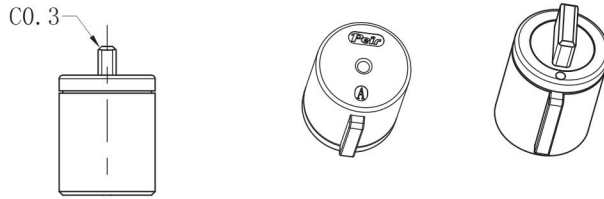
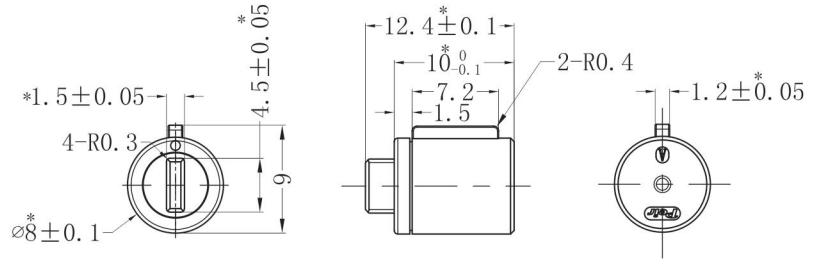
Model:PR-T026D



**Torque** 80-350gf.cm

Static Storage Temperature	Dynamic Working Temperature	Body Material	Shaft Material	Oil
-40°C-110°C	-5°C-50°C	PC	POM	Silicone Oil

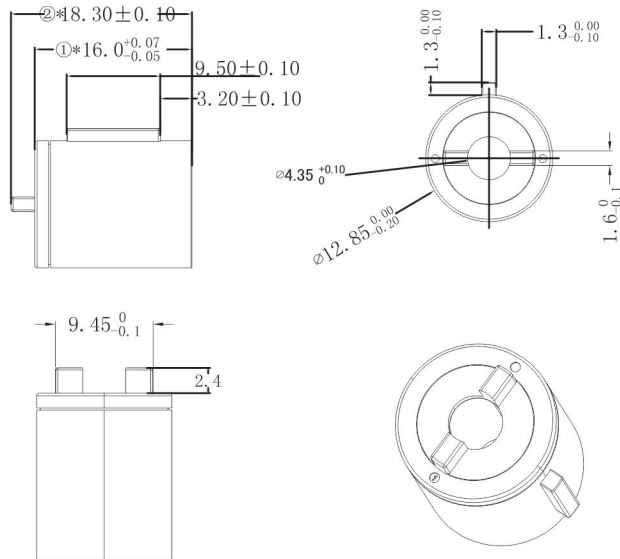
Model:PR-T026F



**Torque** 80-430gf.cm

Static Storage Temperature	Dynamic Working Temperature	Body Material	Shaft Matetial	Oil
-40°C-110°C	-5°C-50°C	PC	POM	Silicone Oil

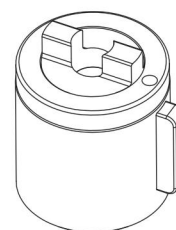
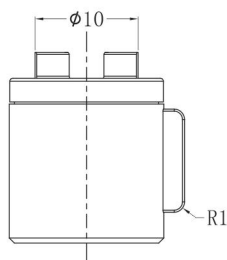
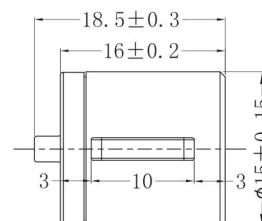
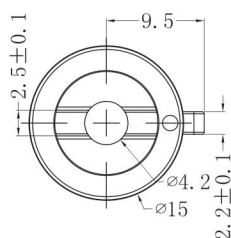
Model:PR-T027A



**Torque** 200-1800GF.CM

Static Storage Temperature	Dynamic Working Temperature	Body Material	Shaft Matetial	Oil
-40°C-110°C	-5°C-50°C	POM	POM	Silicone Oil

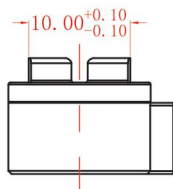
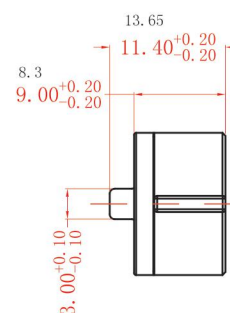
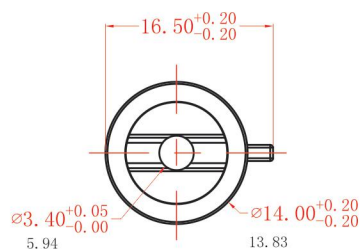
Model:PR-T028A



**Torque** 300-4500GF.CM

Static Storage Temperature	Dynamic Working Temperature	Body Material	Shaft Matetial	Oil
-40°C-110°C	-5°C-50°C	PC	POM	Silicone Oil

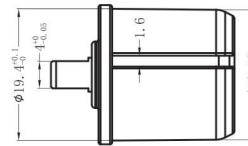
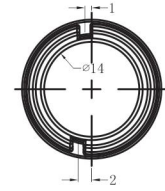
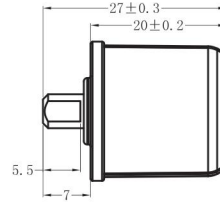
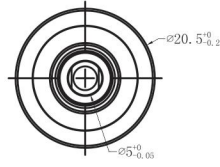
Model:PR-T029A



**Torque** 500-4500gf.cm

Static Storage Temperature	Dynamic Working Temperature	Body Material	Shaft Matetial	Oil
-40°C-110°C	-5°C-50°C	PC	POM	Silicone Oil

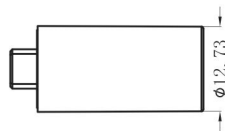
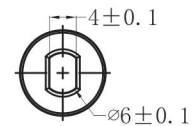
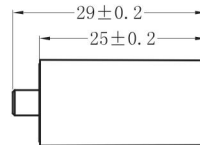
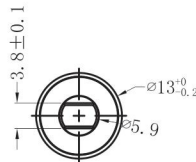
Model:PR-T066A



**Torque** 50-500gf.cm

Static Storage Temperature	Dynamic Working Temperature	Body Material	Shaft Matetial	Oil
-40°C-110°C	-5°C-50°C	PC	POM	Silicone Oil

Model:PR-T080A

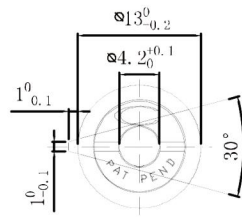


**Torque** 650-4500gf.cm

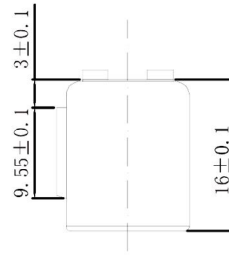
Static Storage Temperature	Dynamic Working Temperature	Body Material	Shaft Matetial	Oil
-40°C-110°C	-5°C-50°C	PC	POM	Silicone Oil

Remarks :  
Compared with T080A, T080B is of different shaft dimension,  $4.1 \pm 0.1$ mm.

Model:PR-FA

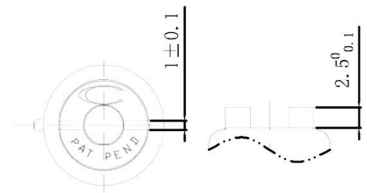
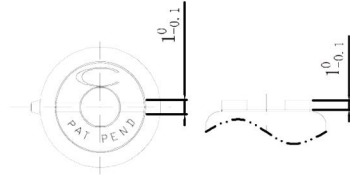
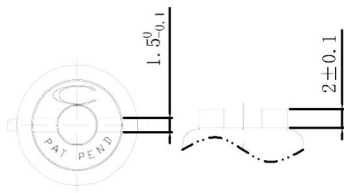


PR-FA1



PR-FA2

PR-FA3

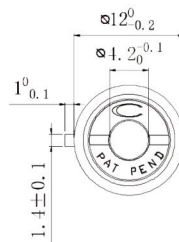


Torque

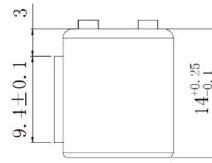
At 20 rpm, 20°C

5-10Ncm

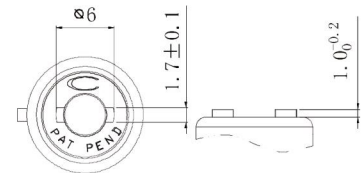
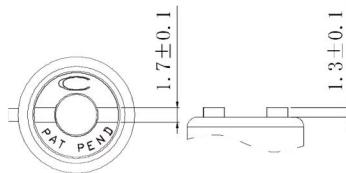
Model:PR-FB



PR-FB4



PR-FB5

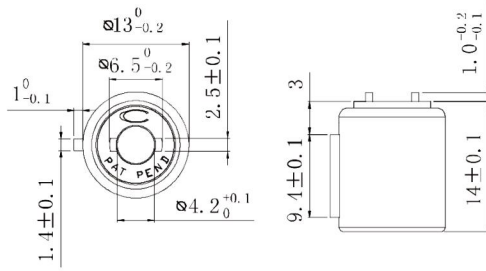


Torque

At 20 rpm, 20°C

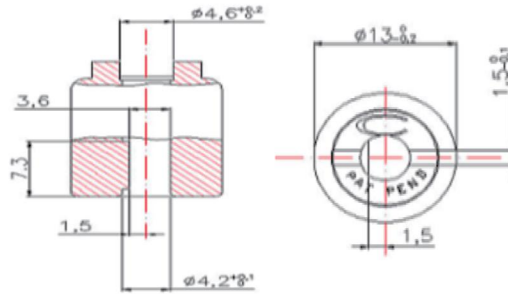
3.4-6.2Ncm

Model:PR-FC



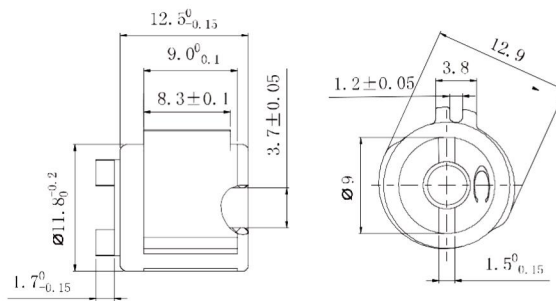
Torque	
At 20 rpm, 20°C	5-9Ncm

Model:PR-FE



Torque	
At 20 rpm, 20°C	10Ncm ± 1.5

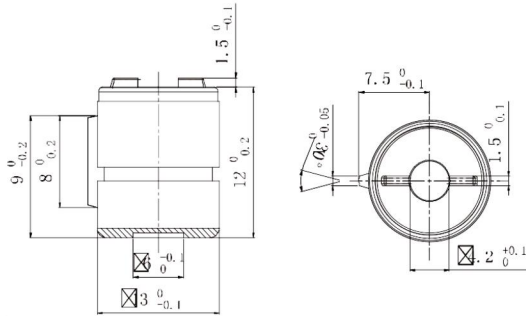
Model:PR-FG



Torque	
At 20 rpm, 20°C	5Ncm ± 0.85

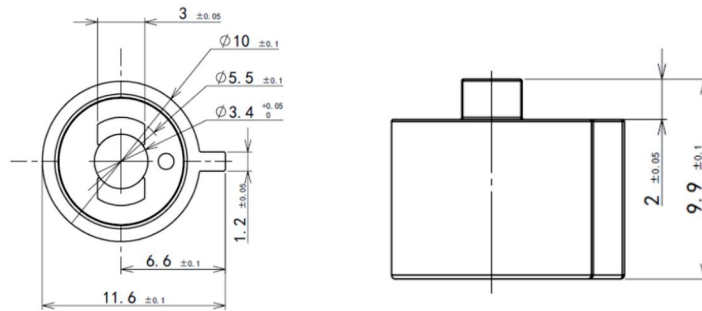


Model:PR-DC001



Torque	
At 20 rpm, 20°C	4.6Ncm ± 0.6

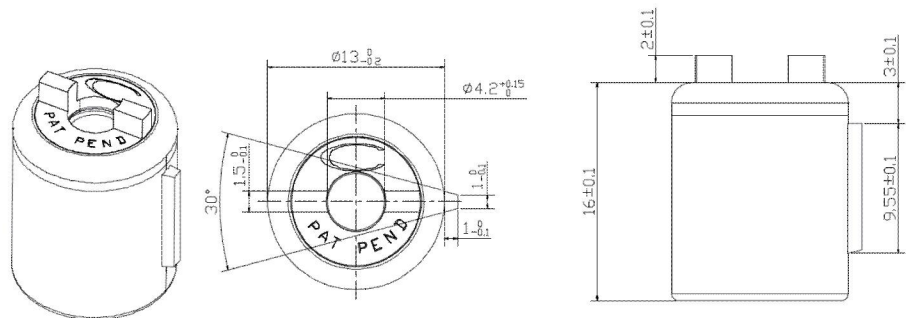
Model:PR-DC002



Body Material	PC
Shaft Material	POM

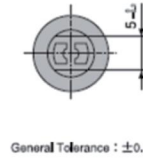
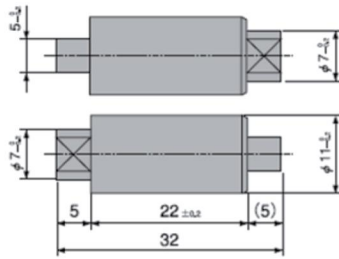
Torque	0.5-4.0Ncm
--------	------------

Model:PR-BA

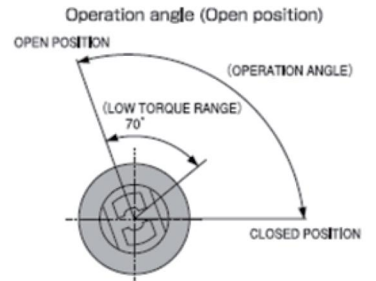


Shaft Material	POM	Static Storage Temperature	-30°C - 90°C
Body Material	PA6GF15	Torque at 20 rpm, 20°C	15-20 Ncm
Oil	Silicone Oil	Life Cycle	50,000 cycles

Model:PR-DED001

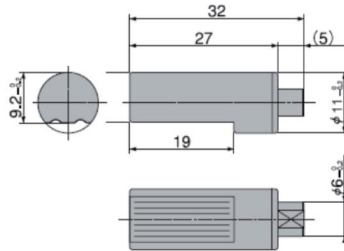
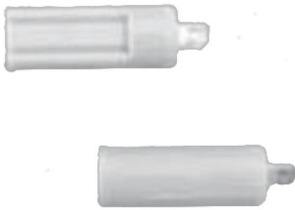


General Tolerance : ±0,3

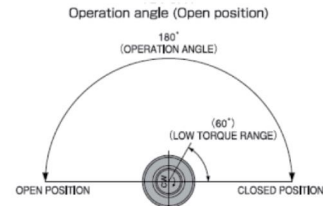


**Torque**  
0.1-0.29Nm

Model:PR-DED002

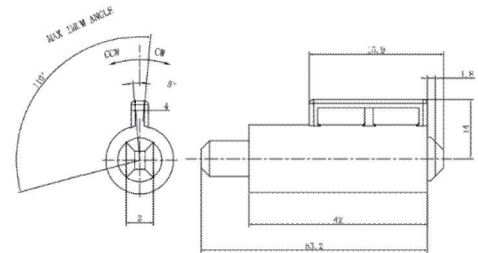
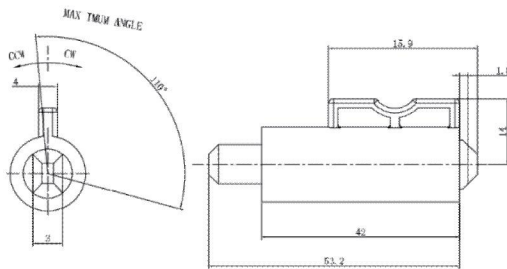


General Tolerance : ±0,3



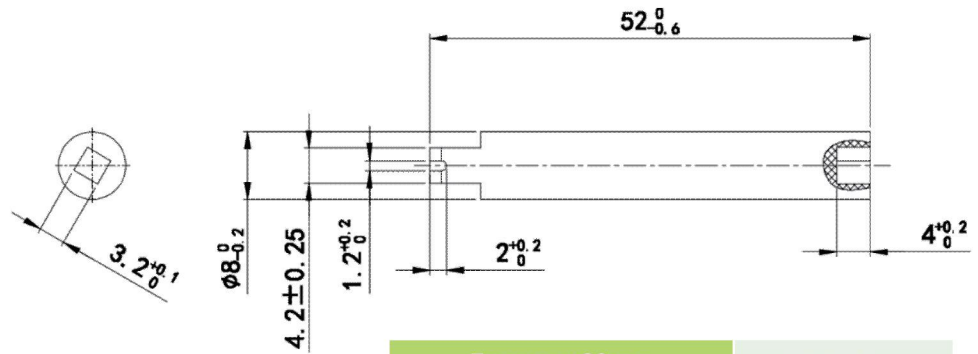
**Torque**  
0.10-0.29N.m

Model:PR-DED003



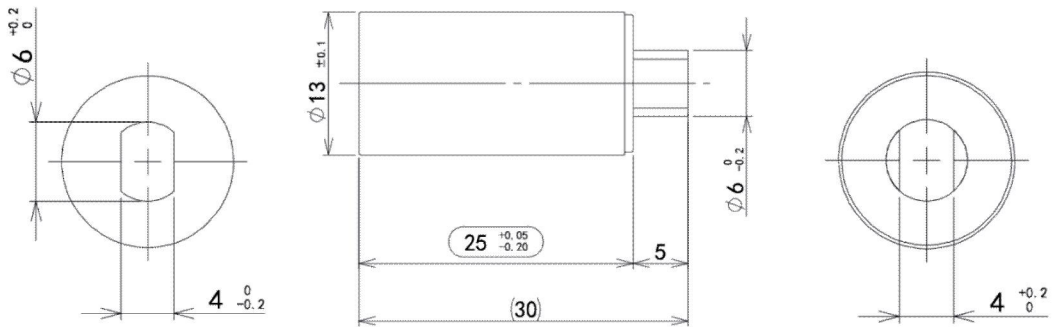
Torque at 20 rpm, 23°C	5.0-10 Ncm	Shaft Matetial	POM
Static Storage Temperature	23°C	Body Material	PBT
Life Cycle	20,000 cycles	Oil	Silicone Oil

Model:PR-DEC001



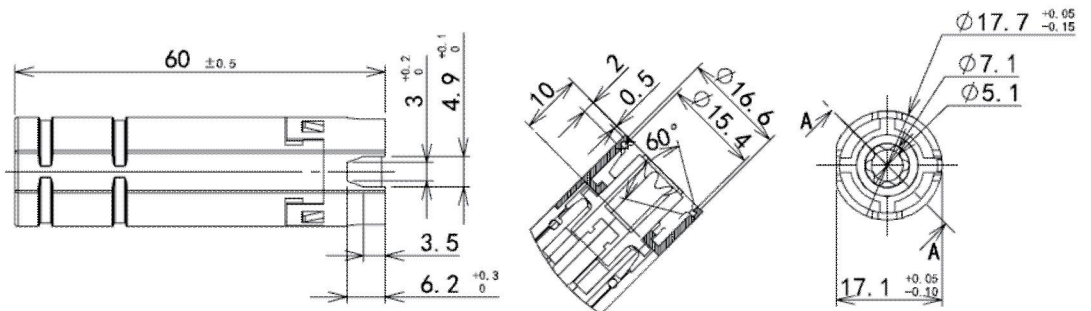
Torque at 20rpm	2.2-4.3 Ncm
-----------------	-------------

Model:PR-DEC002

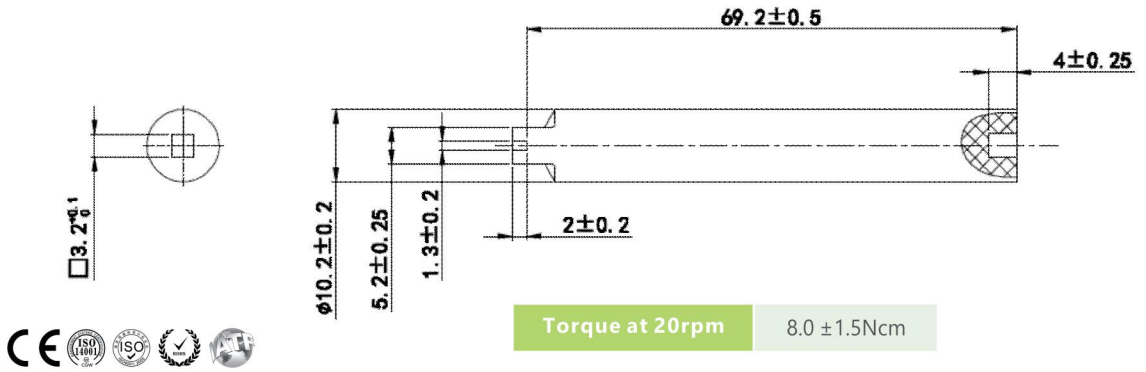


Shaft Material	POM+GF25	Static Storage Temperature	-10°C - 50 °C
Body Material	POM+GF25	Torque at 20 rpm, 20 °C	1.5 - 40 Ncm
Oil	Silicone Oil		

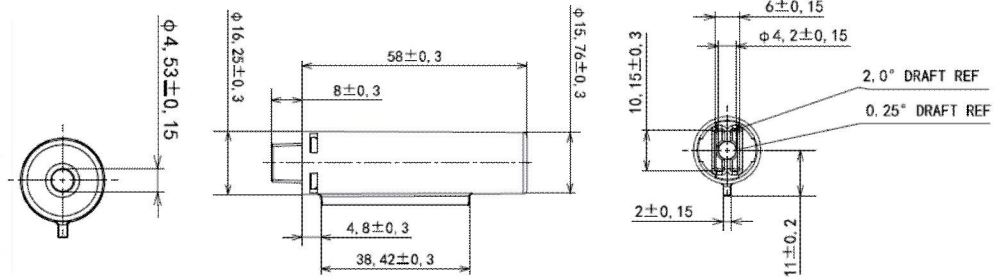
Model:PR-DEC003



Model:PR-DE004



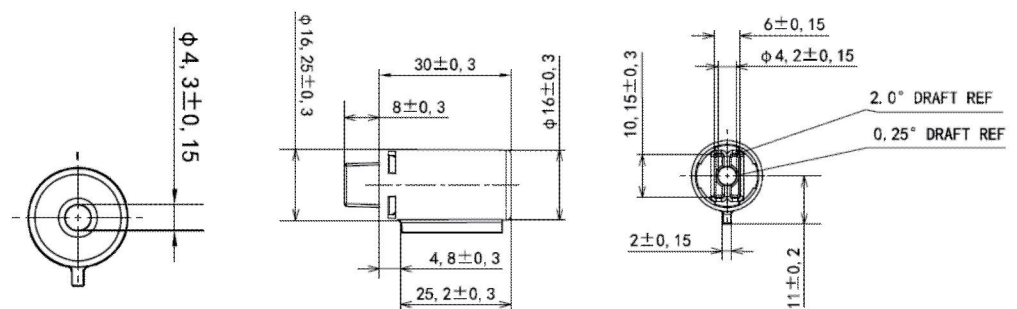
Model:PR-DE005



Torque at 20 rpm, 23 °C

32-55 Ncm

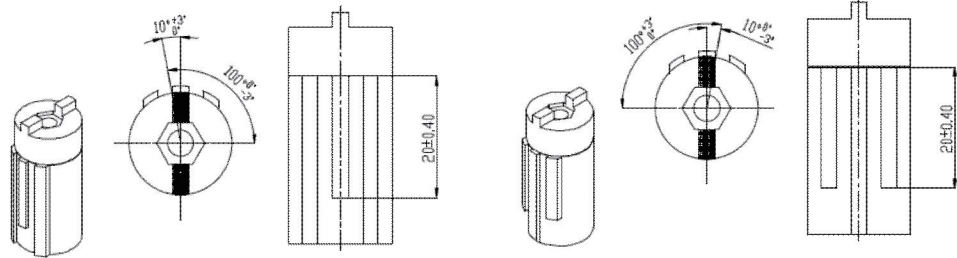
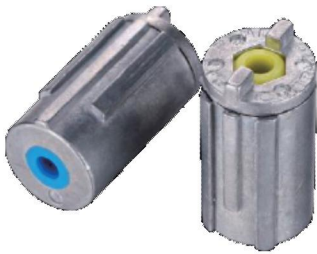
Model:PR-DE006



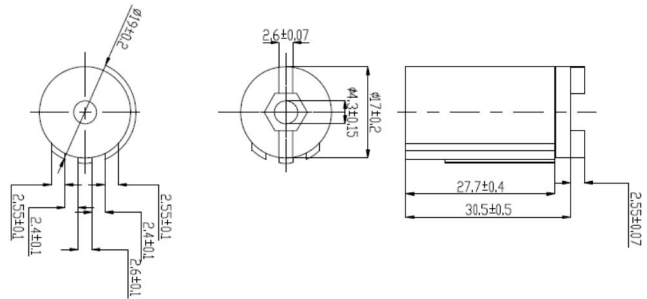
Torque at 20 rpm, 23 °C

9-25 Ncm

Model:PR-GA

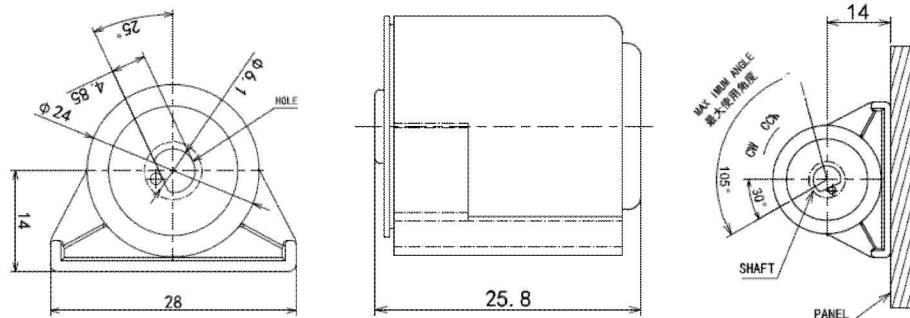


Static Storage Temperature	-30°C - 85°C
Torque at 20rpm, 20°C	70-90 Ncm



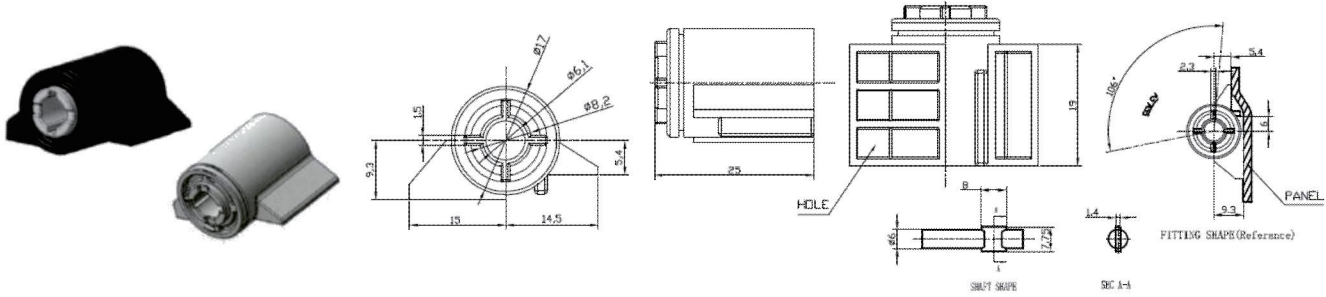
Shaft Material	PC
Body Material	Metal
Oil	Silicone Oil
Life Cycle	10,000 cycles

Model:PR-DEB001



Torque at 20rpm, 20°C	1.8 Ncm ±0.4
Shaft Material	PA66
Body Material	PA66
Oil	Silicone Oil
Life Cycle	10,000 cycles

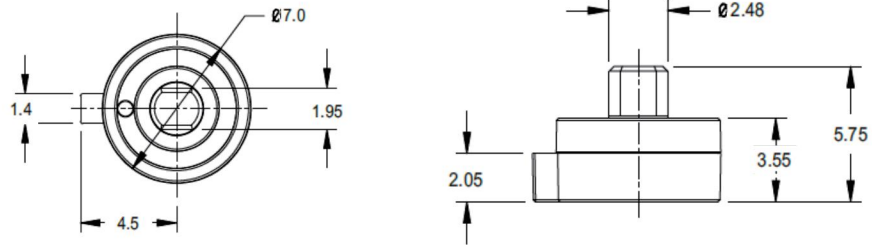
Model:PR-DEB002



<b>Torque at 10rpm, 23°C</b>	0.38-0.54 Ncm
<b>Life Cycle</b>	10,000 cycles

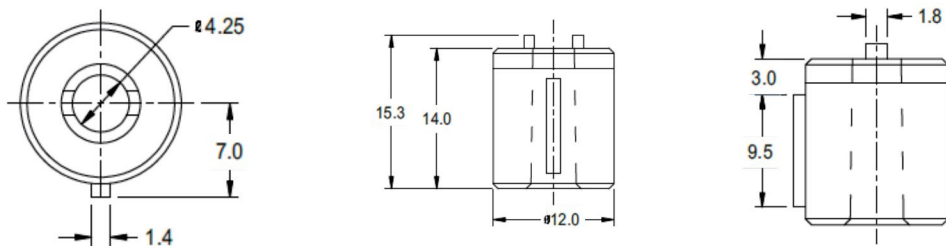
<b>Shaft Material</b>	POM
<b>Body Material</b>	POM
<b>Oil</b>	Silicone Oil

Model:PR-H15



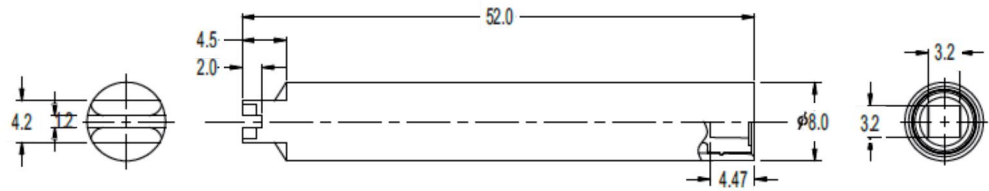
<b>Material</b>	PC/ POM/ Rubber
<b>Oil</b>	Silicone Oil
<b>Torque</b>	20-150gf.cm

Model:PR-H21



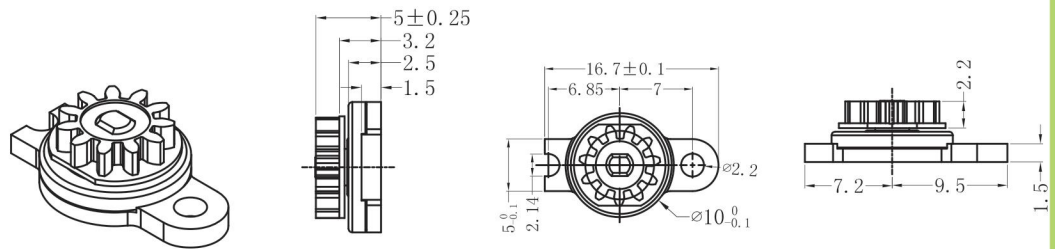
<b>Material</b>	PC/ POM/ Rubber
<b>Oil</b>	Silicone Oil
<b>Torque</b>	200-800gf.cm

Model:PR-H23



Material	Oil	Torque
PC/ Rubber/ SUS	Silicone Oil	30~300gf·cm

Model:PR-T001A



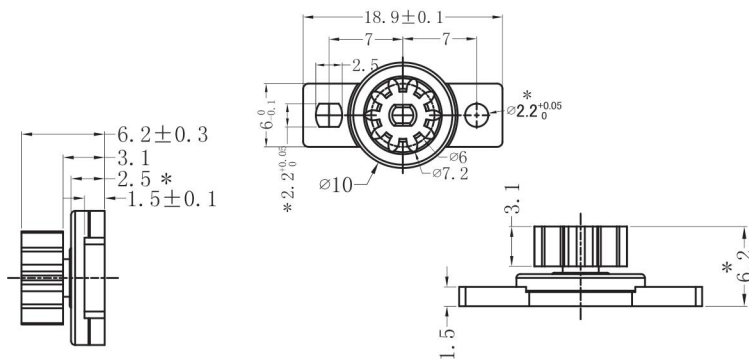
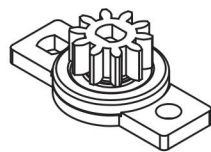
**Torque** 20-135gf·cm

Static Storage Temperature	Dynamic Working Temperature	Body Material	Shaft Material	Gear Material	Oil
-40°C~110°C	-5°C~50°C	PC	POM	POM	Silicone Oil

External Diameter	Dividing Dia	Gear No	Modulus	Pressure Angle
7.8	6.6	11	0.6	20°

Remarks: T001B has no gear.  
Gears are alternative.

Model:PR-T002A



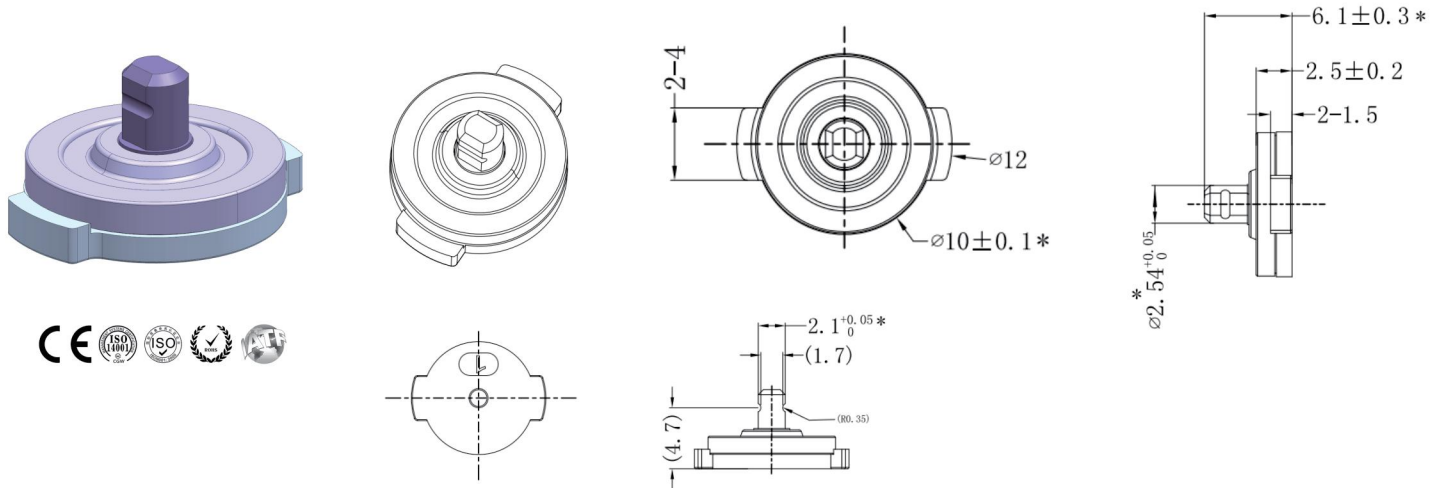
**Torque** 20-135gf·cm

Static Storage Temperature	Dynamic Working Temperature	Body Material	Gear Material	Shaft Material	Oil
-40°C~110°C	-5°C~50°C	PC	POM	POM	Silicone Oil

External Diameter	Dividing Dia	Gear No	Modulus	Pressure Angle
7.2	6	10	0.6	20°

Remarks: T002B has no gear.  
Gears are alternative.

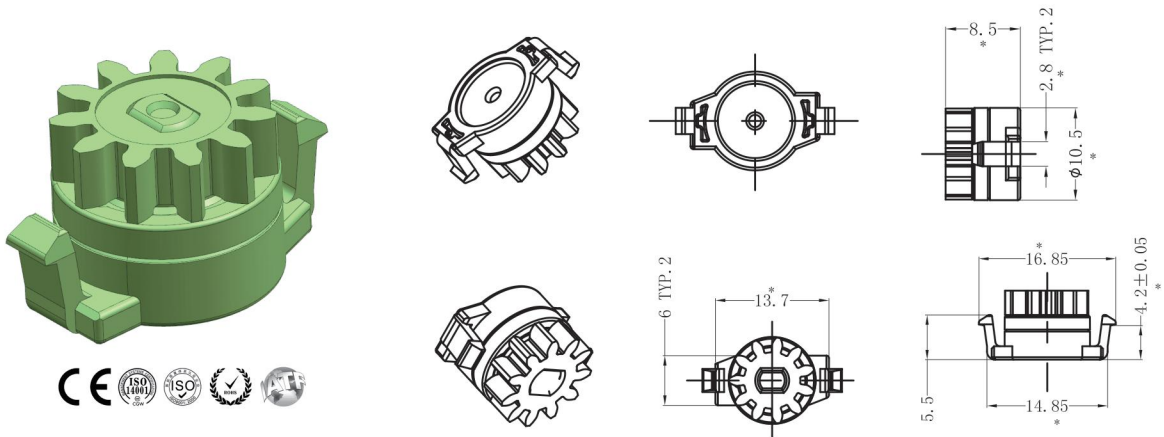
Model:PR-T002C



**Torque** 20-135GF.CM

Static Storage Temperature	Body Material	Shaft Material	Oil
-5°C-50°C	PC	POM	Silicone Oil

Model:PR-T003A



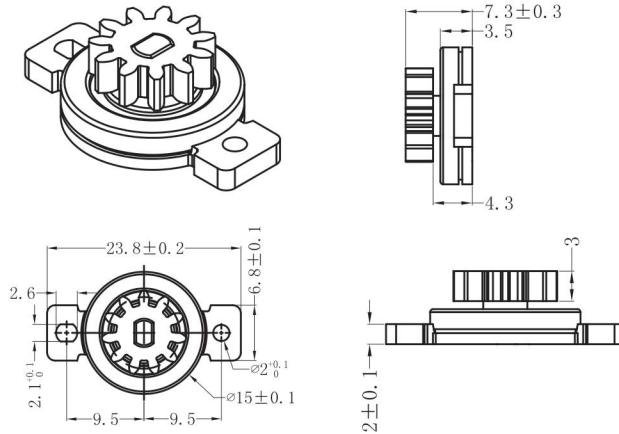
**Torque** 20-150gf.cm

Static Storage Temperature	Dynamic Working Temperature	Body Material	Shaft Material	Gear Material	Oil
-40°C-110°C	-5°C-50°C	PC	POM	POM	Silicone Oil

External Diameter	Dividing Dia	Gear No	Modulus	Pressure Angle
10.4	8.8	11	0.8	20°



Model:PR-T006A

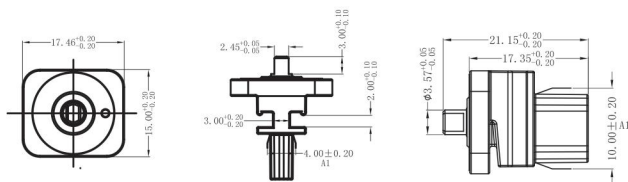
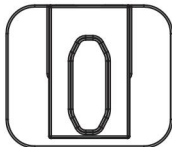
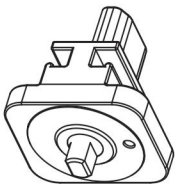
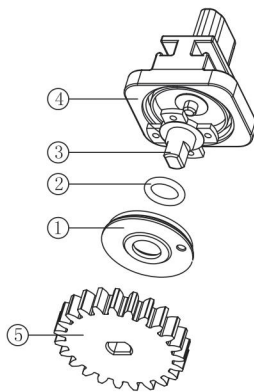
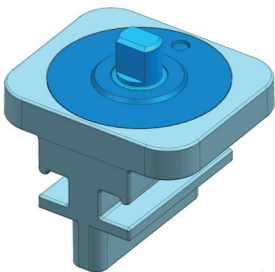


**Torque** 30-250gf.cm

Static Storage Temperature	Dynamic Working Temperature	Body Material	Shaft Material	Gear Material	Oil
-40°C-50°C	-5°C-50°C	PC	POM	POM	Silicone Oil

External Diameter	Dividing Dia	Gear No	Modulus	Pressure Angle
10.4	8.8	11	0.8	20°

Model:PR-T009B



**Torque** 30-500gf.cm

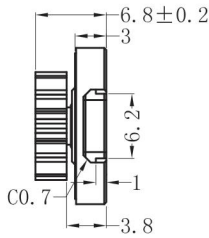
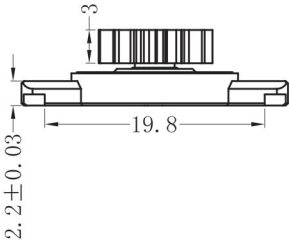
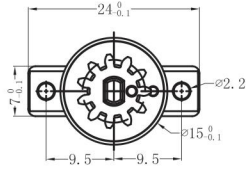
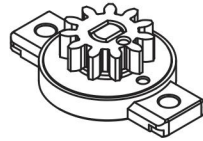
<b>Static Storage Temperature</b>	-40°C-110°C
<b>Dynamic Working Temperature</b>	-5°C-50°C
<b>Body Material</b>	POM
<b>Shaft Material</b>	POM
<b>Oil</b>	Silicone Oil

<b>External Diameter</b>	20
<b>Dividing Dia</b>	18.4
<b>Gear No</b>	23
<b>Modulus</b>	0.8
<b>Pressure Angle</b>	20°

Remarks:

Compared with T009B, the total length of T009A is 16.25 ± 0.2mm of total length.

Model:PR-T009D

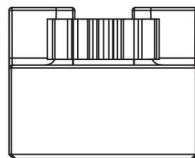
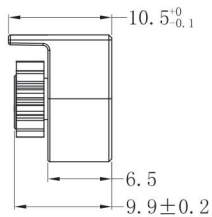
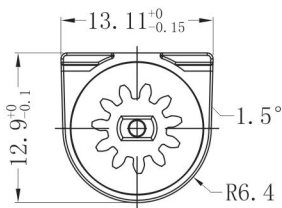
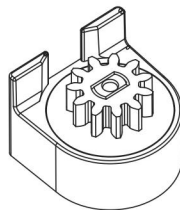


<b>Torque</b>	30-500gf.cm
<b>Static Storage Temperature</b>	-40°C-110°C
<b>Dynamic Working Temperature</b>	-5°C-50°C
<b>Body Material</b>	PC
<b>Shaft Material</b>	POM
<b>Gear Material</b>	POM
<b>Oil</b>	Silicone Oil

<b>External Diameter</b>	10.4
<b>Dividing Dia</b>	8.8
<b>Gear No</b>	11
<b>Modulus</b>	0.8
<b>Pressure Angle</b>	20°

Remarks:  
Compared with T009D, T009C is gearless, and T009E is different with the body height 7.3 ±0.3mm.

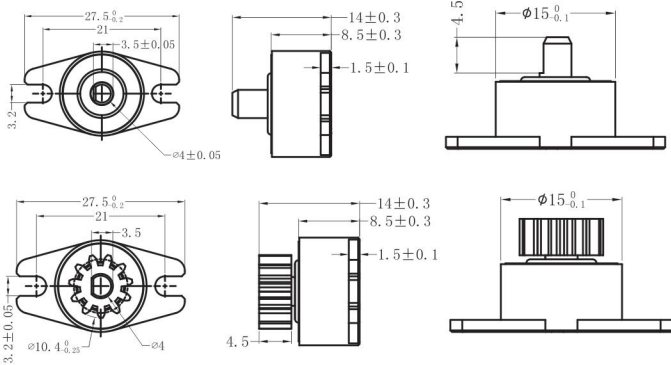
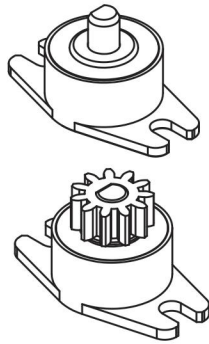
Model:PR-T011A



<b>Torque</b>	50-200gf.cm
<b>Static Storage Temperature</b>	-40°C-110°C
<b>Dynamic Working Temperature</b>	-5°C-50°C
<b>Body Material</b>	PC
<b>Shaft Material</b>	POM
<b>Gear Material</b>	POM
<b>Oil</b>	Silicone Oil

<b>External Diameter</b>	7.8
<b>Dividing Dia</b>	6.6
<b>Gear No</b>	11
<b>Modulus</b>	0.6
<b>Pressure Angle</b>	20°

Model:PR-T018A



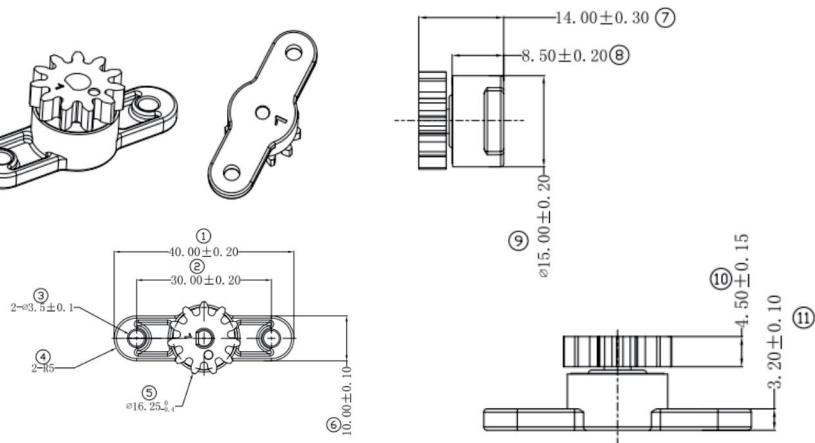
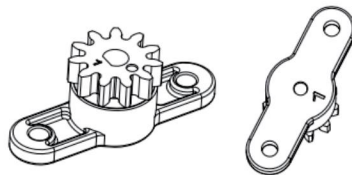
<b>Torque</b>	70-500gf.cm
---------------	-------------

<b>Static Storage Temperature</b>	-40°C-110°C
<b>Dynamic Working Temperature</b>	-5°C-50°C
<b>Body Material</b>	PC
<b>Shaft Material</b>	POM
<b>Gear Material</b>	POM
<b>Oil</b>	Silicone Oil

<b>External Diameter</b>	10.4
<b>Dividing Dia</b>	8.8
<b>Gear No</b>	11
<b>Modulus</b>	0.8
<b>Pressure Angle</b>	20°

Remarks:  
T018B is unidirectional while T018A is bidirectional. Gears are alternative.

Model:PR-T018D

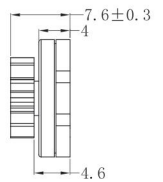
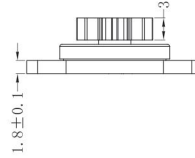
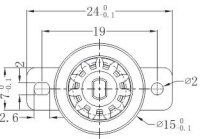
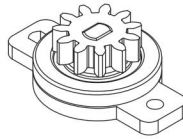
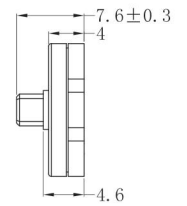
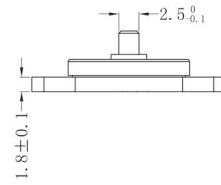
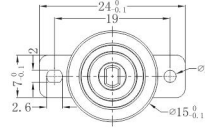
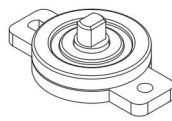


<b>Torque</b>	70-500gf.cm
---------------	-------------

<b>Static Storage Temperature</b>	<b>Dynamic Working Temperature</b>	<b>Body Material</b>	<b>Shaft Material</b>	<b>Gear Material</b>	<b>Oil</b>
-40°C-110°C	-5°C-50°C	PC	POM	POM	Silicone Oil

<b>External Diameter</b>	<b>Dividing Dia</b>	<b>Gear No</b>	<b>Modulus</b>	<b>Pressure Angle</b>
16.25	13.75	11	1.25	20°

Model:PR-T020A



<b>Torque</b>	20-300gf.cm
---------------	-------------

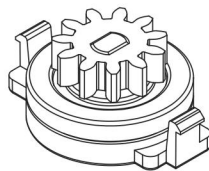
Static Storage Temperature	Dynamic Working Temperature	Body Material	Shaft Matetial	Oil
-40°C-110°C	-5°C-50°C	PC	POM	Silicone Oil

External Diameter	Dividing Dia	Gear No	Modulus	Pressure Angle
10.4	8.8	11	0.8	20°

Remarks:

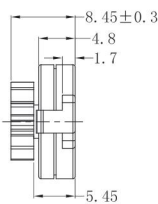
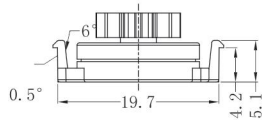
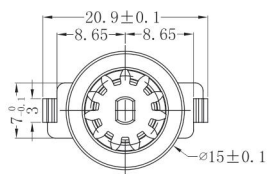
Another material of POM is available. Gears are alternative.

Model:PR-T033A



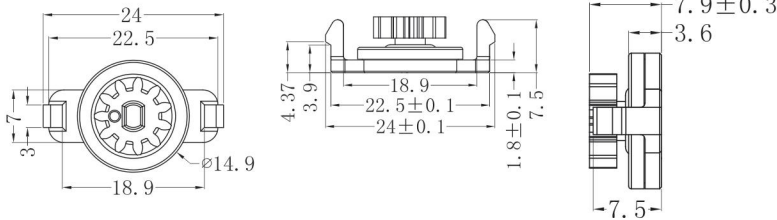
<b>Torque</b>	30-350gf.cm
---------------	-------------

<b>Static Storage Temperature</b>	-40°C-110°C
<b>Dynamic Working Temperature</b>	-5°C-50°C
<b>Body Material</b>	PC
<b>Shaft Matetial</b>	POM
<b>Gear Matetial</b>	POM
<b>Oil</b>	Silicone Oil



<b>External Diameter</b>	10.4
<b>Dividing Dia</b>	8.8
<b>Gear No</b>	11
<b>Modulus</b>	0.8
<b>Pressure Angle</b>	20°

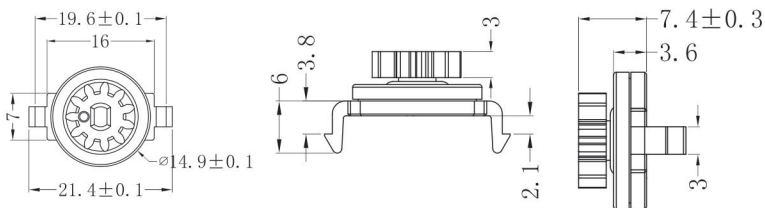
Model:PR-T035



<b>Torque</b>	50-350gf.cm
<b>Static Storage Temperature</b>	-40°C-110°C
<b>Dynamic Working Temperature</b>	-5°C-50°C
<b>Body Material</b>	PC
<b>Shaft Matetial</b>	POM
<b>Oil</b>	Silicone Oil

<b>External Diameter</b>	10.4
<b>Dividing Dia</b>	8.8
<b>Gear No</b>	11
<b>Modulus</b>	0.8
<b>Pressure Angle</b>	20°

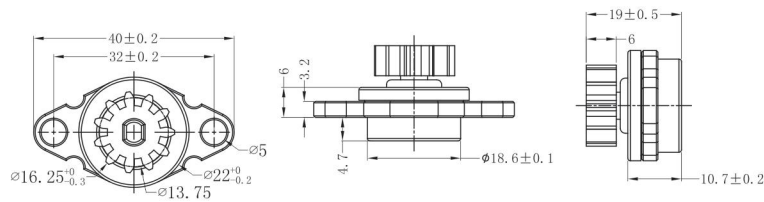
Model:PR-T036



<b>Torque</b>	30-250gf.cm
<b>Static Storage Temperature</b>	-40°C-110°C
<b>Dynamic Working Temperature</b>	-5°C-50°C
<b>Body Material</b>	PC
<b>Shaft Matetial</b>	POM
<b>Gear Matetial</b>	POM
<b>Oil</b>	Silicone Oil

<b>External Diameter</b>	10.4
<b>Dividing Dia</b>	8.8
<b>Gear No</b>	11
<b>Modulus</b>	0.8
<b>Pressure Angle</b>	20°

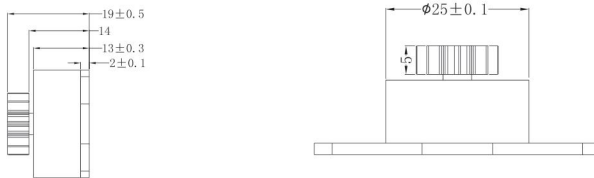
Model:PR-T038A



<b>Torque</b>	300-2000gf.cm
<b>Static Storage Temperature</b>	-40°C-110°C
<b>Dynamic Working Temperature</b>	-5°C-50°C
<b>Body Material</b>	PC
<b>Shaft Material</b>	POM
<b>Gear Material</b>	POM
<b>Oil</b>	Silicone Oil

<b>External Diameter</b>	16.25
<b>Dividing Dia</b>	13.75
<b>Gear No</b>	11
<b>Modulus</b>	1.25
<b>Pressure Angle</b>	20°

Model:PR-T068A



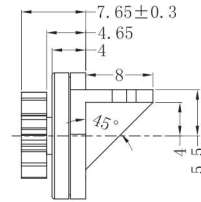
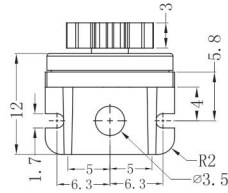
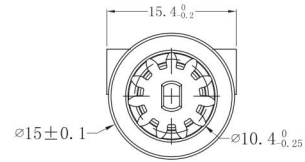
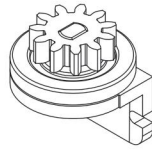
<b>Torque</b>	500-4500gf.cm
---------------	---------------

<b>Static Storage Temperature</b>	<b>Dynamic Working Temperature</b>	<b>Body Material</b>	<b>Shaft Material</b>	<b>Oil</b>
-40°C-110°C	-5°C-50°C	PC	POM+Stainless steel	Silicone Oil

<b>External Diameter</b>	<b>Dividing Dia</b>	<b>Gear No</b>	<b>Pressure Angle</b>
14.75	12	12	20°

Remarks:  
Gears are alternative. T068A is unidirectional while T068B bidirectional.

Model:PR-T090A

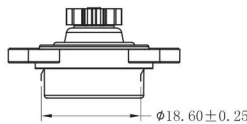
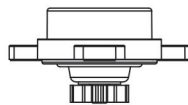
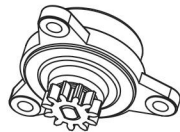


Torque 30-250gf.cm

Static Storage Temperature	Dynamic Working Temperature	Body Material	Shaft Matetial	Oil
-40°C-110°C	-5°C-50°C	PC	POM	Silicone Oil

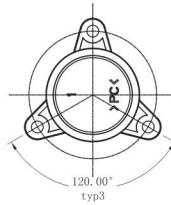
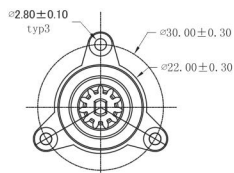
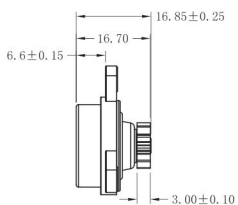
External Diameter	Dividing Dia	Gear No	Modulus	Pressure Angle
10.4	8.8	11	0.8	20°

Model:PR-T091



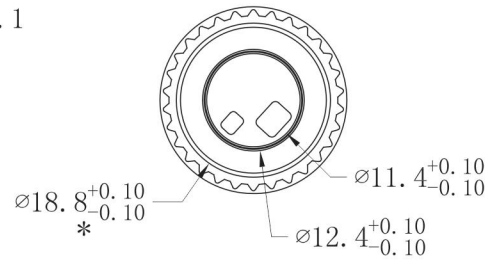
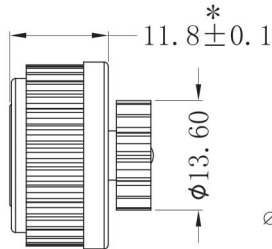
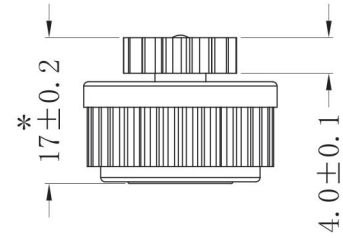
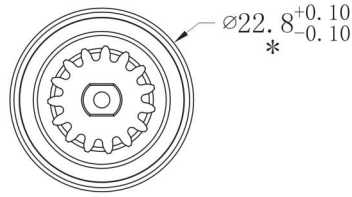
Torque 350-900gf.cm

Static Storage Temperature	-40°C-110°C
Dynamic Working Temperature	-20°C-70°C
Body Material	PC
Gear Matetial	POM
Shaft Matetial	PA66
Oil	Silicone Oil



External Diameter	10.4
Dividing Dia	8.8
Gear No	11
Modulus	0.8
Pressure Angle	20°

Model:PR-T103

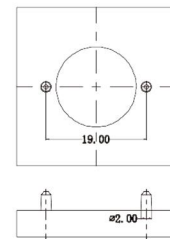
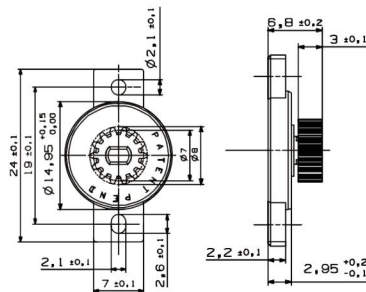


<b>Torque</b>	20-135gf.cm
---------------	-------------

<b>Static Storage Temperature</b>	-40°C-110°C
<b>Dynamic Working Temperature</b>	-5°C-50°C
<b>Body Material</b>	PC
<b>Gear Matetial</b>	POM
<b>Shaft Matetial</b>	POM
<b>Oil</b>	Silicone Oil

<b>External Diameter</b>	13.6
<b>Dividing Dia</b>	12
<b>Gear No</b>	15
<b>Modulus</b>	0.8
<b>Pressure Angle</b>	20°

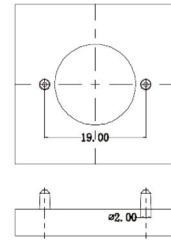
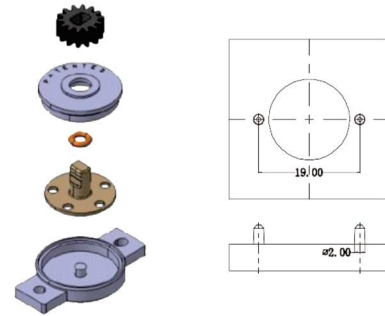
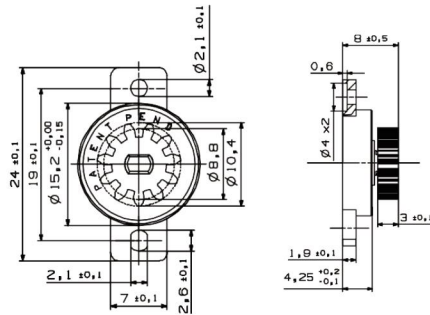
Model:PR-CA



<b>Gear Material</b>	<b>Shaft Matetial</b>	<b>Case</b>	<b>Cover</b>	<b>Sealing Ring</b>	<b>Oil</b>
POM	POM	PA66GF13	PA66	Silicone Rubber	Silicone Oil

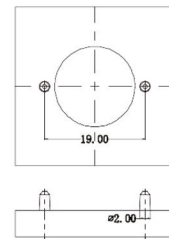
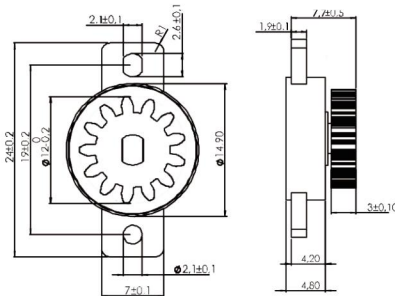


Model:PR-CB



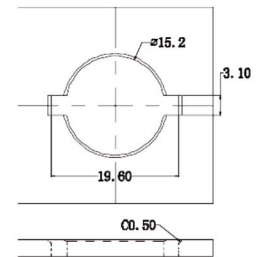
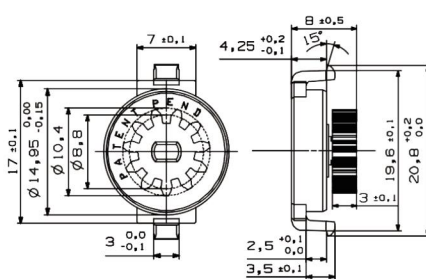
Gear Material	Shaft Material	Case	Cover	Sealing Ring	Oil
POM	POM	PA66GF13	PA66	Silicone Rubber	Silicone Oil

Model:PR-CB-Unidirectional



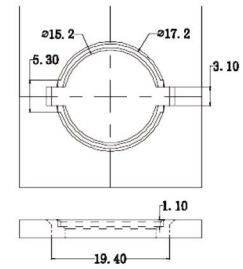
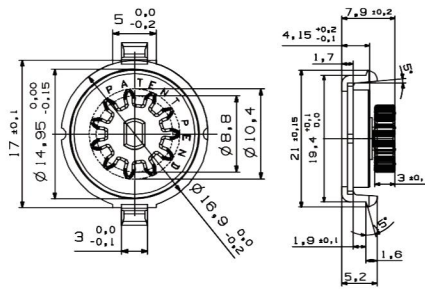
Gear Material	Shaft Material	Case	Cover	Sealing Ring	Oil
POM	POM	PA66GF13	PA66	Silicone Rubber	Silicone Oil

Model:PR-CD



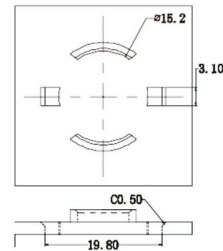
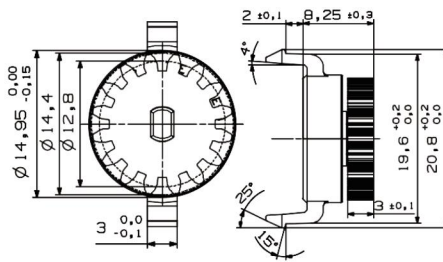
Gear Material	Shaft Material	Case	Cover	Sealing Ring	Oil
POM	POM	PA66GF13	PA66	Silicone Rubber	Silicone Oil

Model:PR-CE



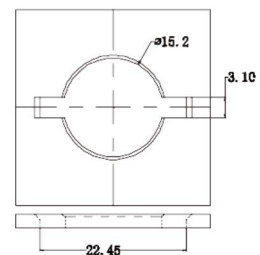
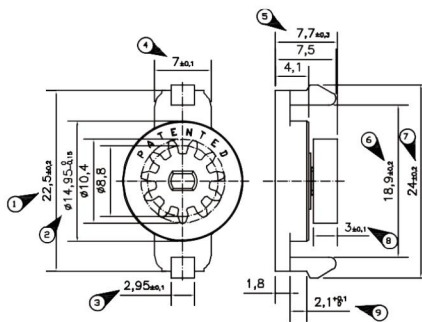
Gear Material	Shaft Material	Case	Cover	Sealing Ring	Oil
POM	POM	PA66GF13	PA66	Silicone Rubber	Silicone Oil

Model:PR-CF



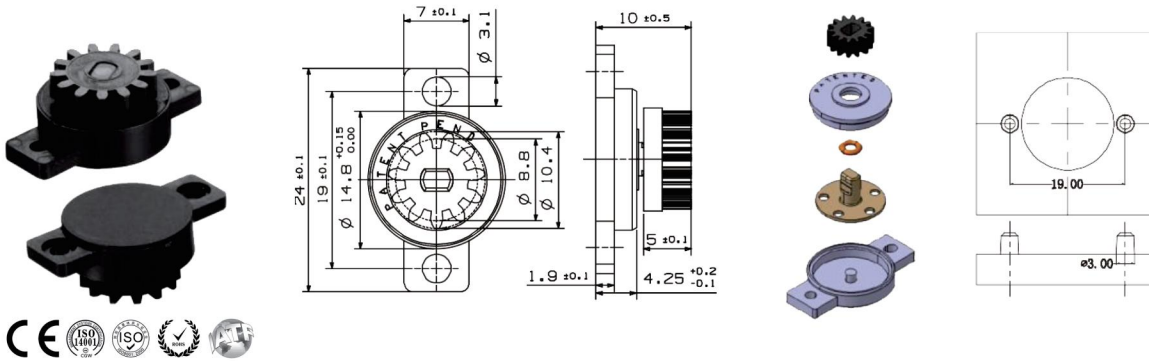
Gear Material	Shaft Material	Case	Cover	Sealing Ring	Oil
POM	POM	PA66	PA66	Silicone Rubber	Silicone Oil

Model:PR-CG



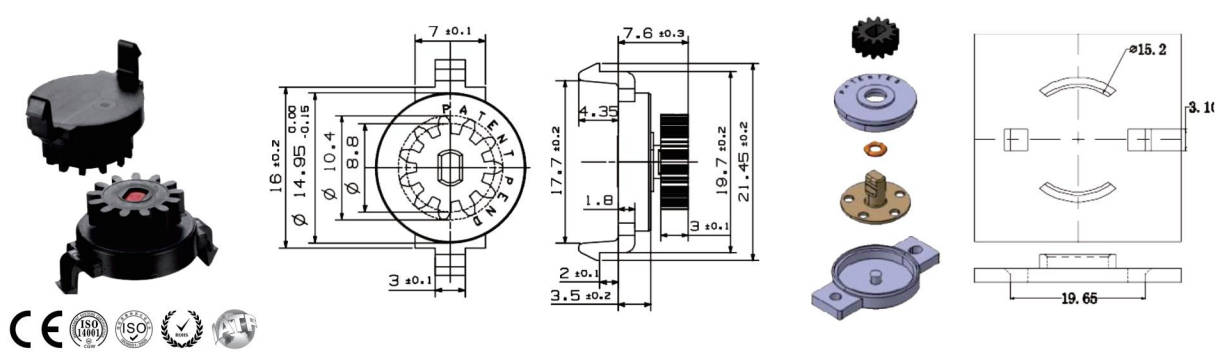
Gear Material	Shaft Material	Case	Cover	Sealing Ring	Oil
POM	POM	PC	PC	Silicone Rubber	Silicone Oil

Model:PR-CI



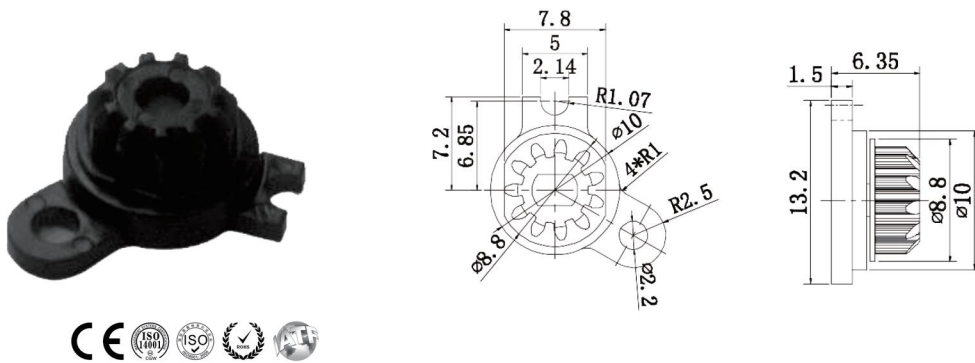
Gear Material	Shaft Material	Case	Cover	Sealing Ring	Oil
POM	POM	PA66GF13	PA66	Silicone Rubber	Silicone Oil

Model:PR-CJ

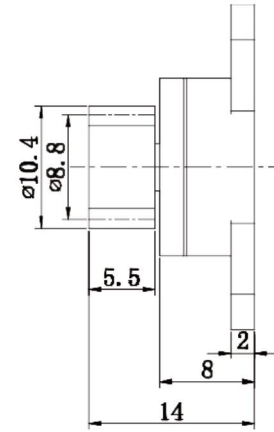
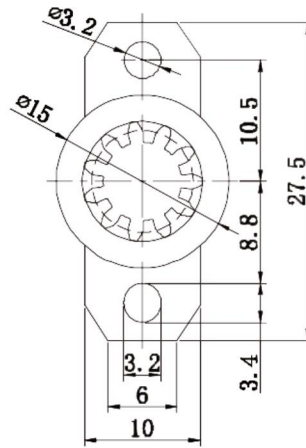


Gear Material	Shaft Material	Case	Cover	Sealing Ring	Oil
POM	POM	PC	PC	Silicone Rubber	Silicone Oil

Model:PR-DA004

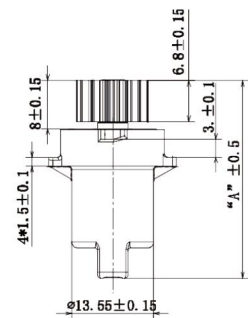
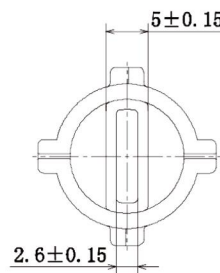
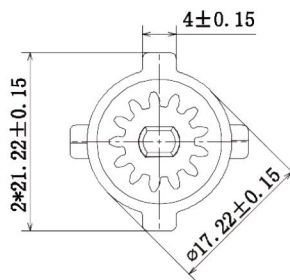


Model:PR-DA005



<b>Torque</b>	27-51Ncm		
<b>Shaft Material</b>	<b>Body Material</b>	<b>Sealing Ring</b>	<b>Oil</b>
POM	PC	Silicone Rubber	Silicone Oil

Model:PR-DA007

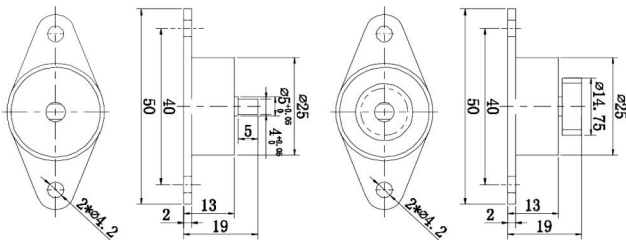


<b>Torque</b>	1-5.3Ncm		
---------------	----------	--	--

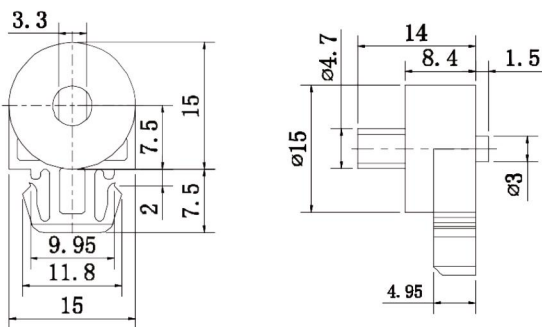
Model:PR-DB002



Torque at 20rpm, 23°C 5-15Ncm

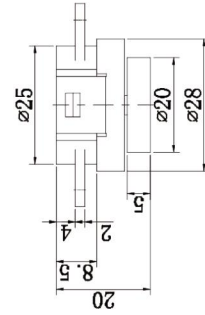
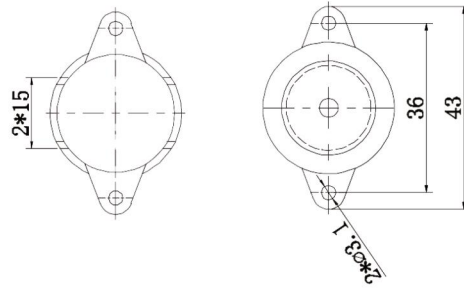


Model:PR-DA008



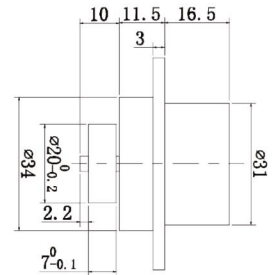
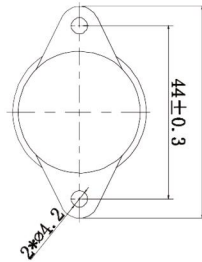
Torque	22.5-46.6mN.m
Body Material	PC
Shaft Material	PC
Oil	Silicone Oil
Static Storage Temperature	23°C
Life Cycle	20,000 cycles

Model:PR-DB003

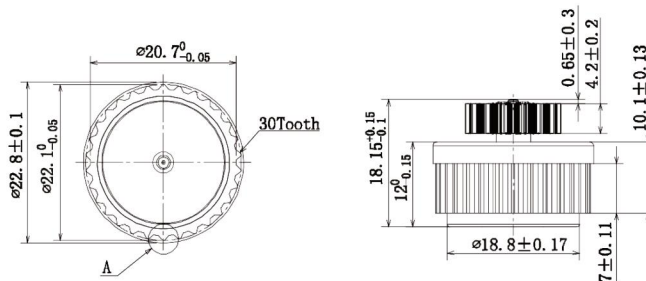


<b>Torque</b>	30-200Nm
<b>Modulus</b>	20°
<b>Pressure Angle</b>	15°
<b>Gear No.</b>	15
<b>Dividing Dia.</b>	0.3

Model:PR-DB004

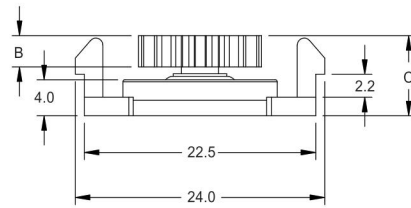
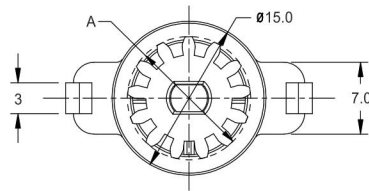


Model:PR-DB001



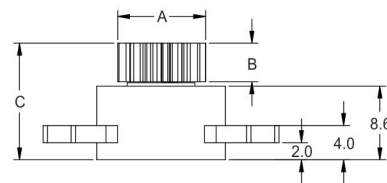
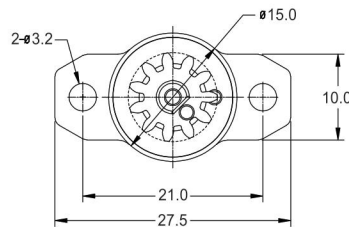
<b>Torque at 20rpm, 23 °C</b>	2.2-12Ncm
<b>Gear No.</b>	15
<b>Modulus</b>	0.8
<b>Pressure Angle</b>	20°

Model:PR-H03B



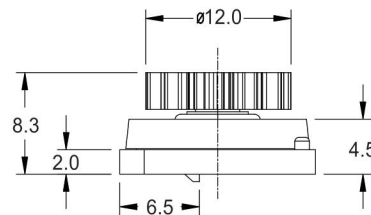
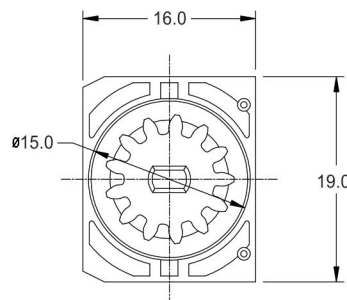
Gear No	Modulus	Dividing Dia	Pressure Angle	Torque	Material	Oil
16	0.8	12.8	20°	40-160gf.cm	PC/ POM	Silicone Oil

Model:PR-H06B/H06C



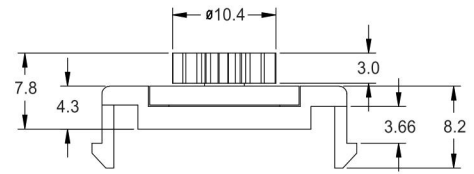
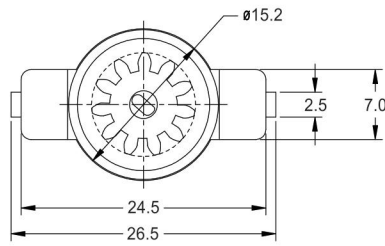
Model	A	B	C	Gear No.	Modulus	Dividing Dia	Pressure Angle	Material	Oil	Torque
H06B	10.4	4.5	13.6	11	0.8	8.8	20°	PC/ POM	Silicone Oil	25-400gf.cm
H06C	12	4.5	13.6	10	1	10	20°			

Model:PR-H08D



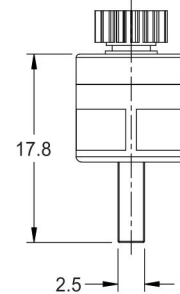
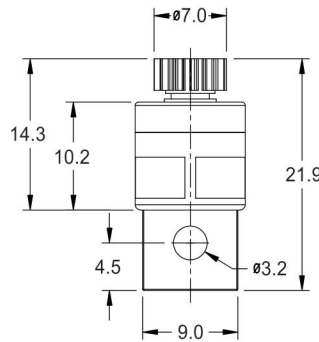
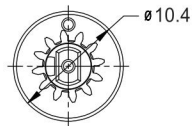
Gear No	Modulus	Dividing Dia	Pressure Angle	Torque	Material	Oil
13	0.8	10.4	20°	40-160gf.cm	PC/ POM	Silicone Oil

Model:PR-H10



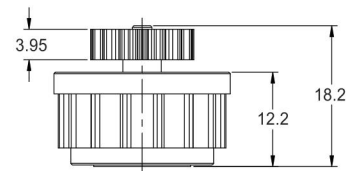
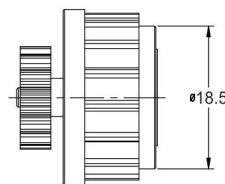
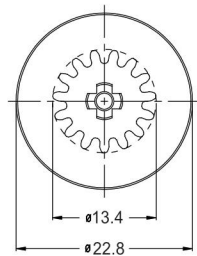
Gear No	Modulus	Dividing Dia	Pressure Angle	Torque	Material	Oil
11	0.8	8.8	20°	25-160gf.cm	PC/ POM	Silicone Oil

Model:PR-H14



Gear No	Modulus	Dividing Dia	Pressure Angle	Torque	Material	Oil
12	0.5	6.0	20°	25-160gf.cm	PC/ POM	Silicone Oil

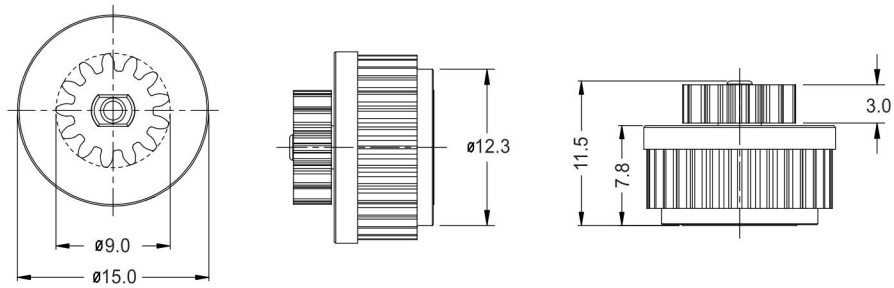
Model:PR-H18



Gear No	Modulus	Dividing Dia	Pressure Angle	Torque	Material	Oil
15	0.8	12	20°	400-1600gf.cm	ABS/ POM	Silicone Oil

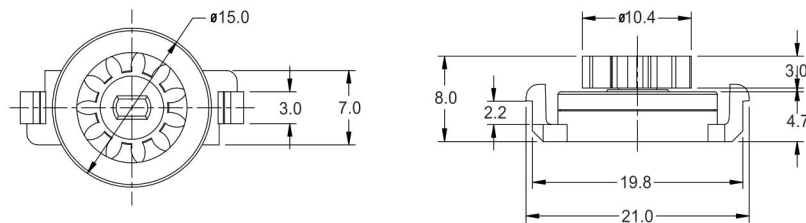


Model:PR-H19



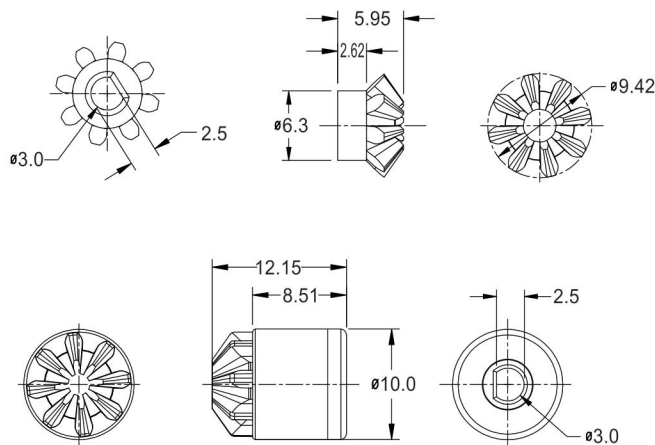
Gear No	Modulus	Dividing Dia	Pressure Angle	Torque	Material	Oil
13	0.6	7.8	20°	200-800gf.cm	ABS/ POM	Silicone Oil

Model:PR-H20

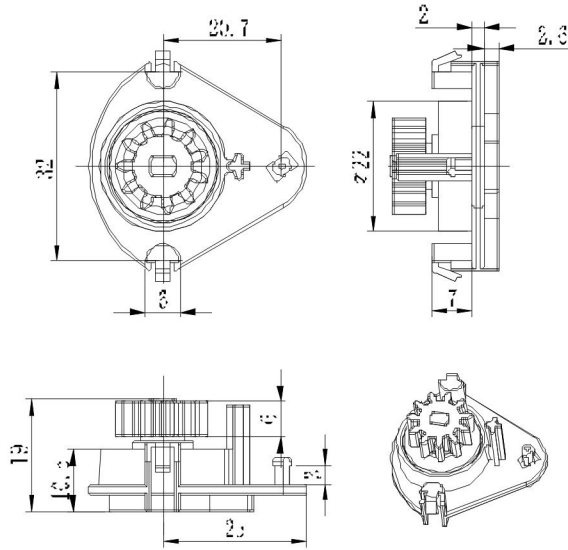


Gear No	Modulus	Dividing Dia	Pressure Angle	Torque	Material	Oil
11	0.8	8.8	20°	50-150gf.cm	ABS/ POM	Silicone Oil

Model:PR-H32

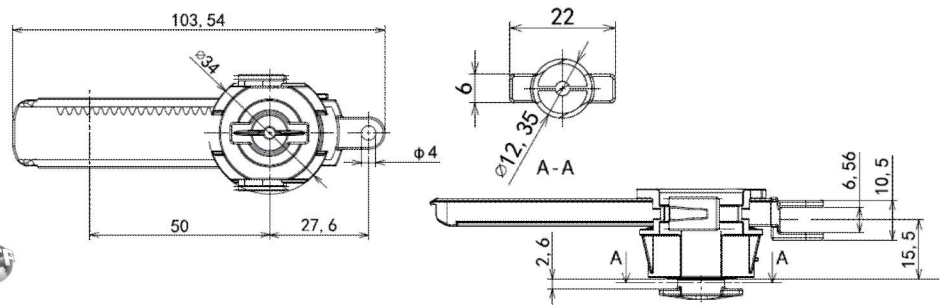


Model:PR-H33

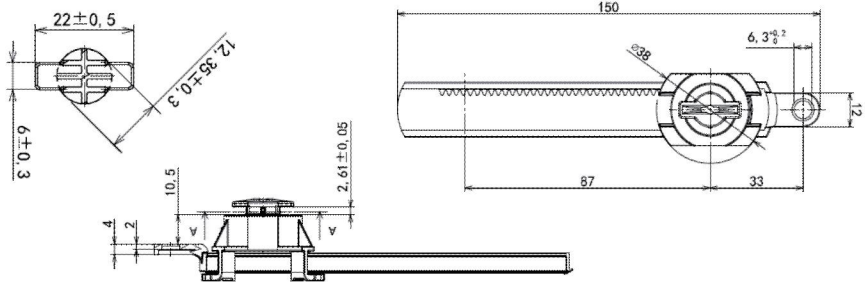


Gear No	Modulus	Dividing Dia	Pressure Angle	Torque	Material	Oil
11	1.25	16.25	20°	200-600gf.cm	ABS/ POM	Silicone Oil

Model:PR-DH003

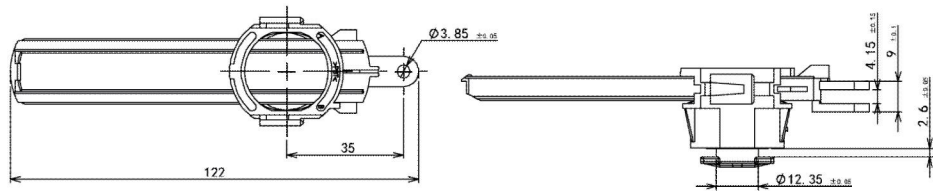


Model:PR-DH002

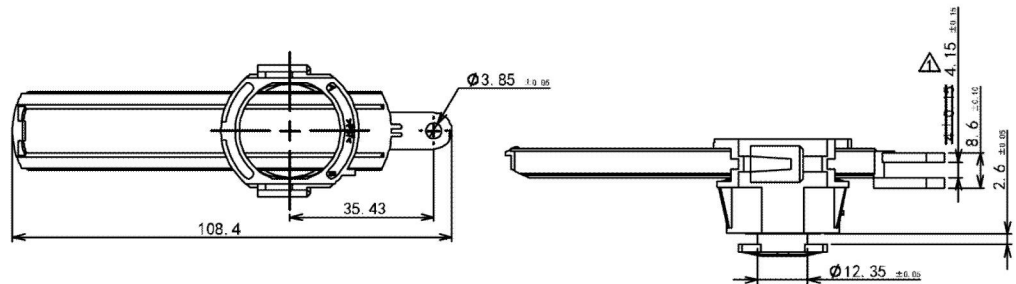


Rack Material	PA66+GF
Body Material	PBT
Gear Material	POM
Oil	Silicone Oil
Torque at 20 rpm, 23°C	2.2-12Ncm

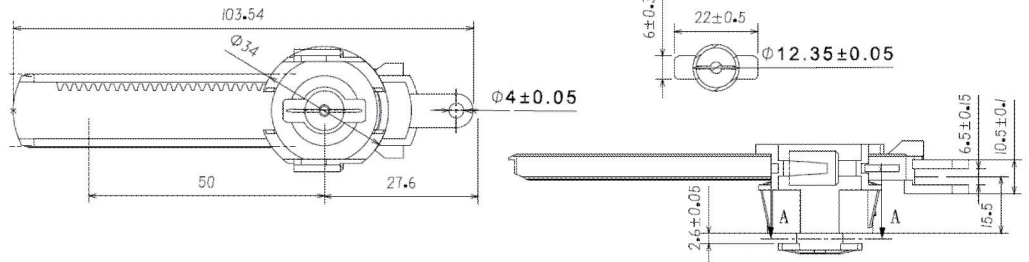
Model:PR-DH005



Model:PR-DH007

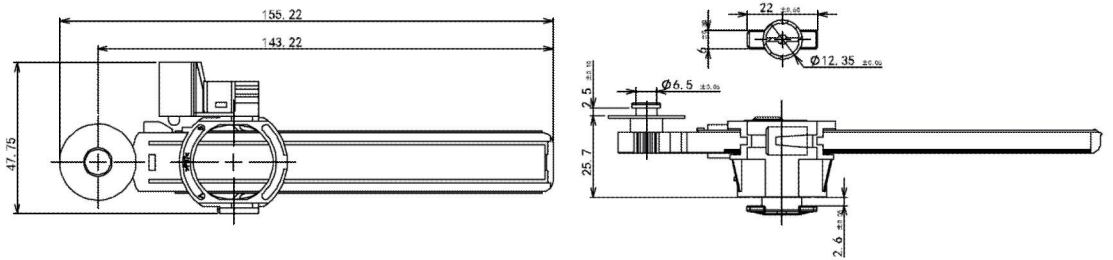


Model:PR-DH009



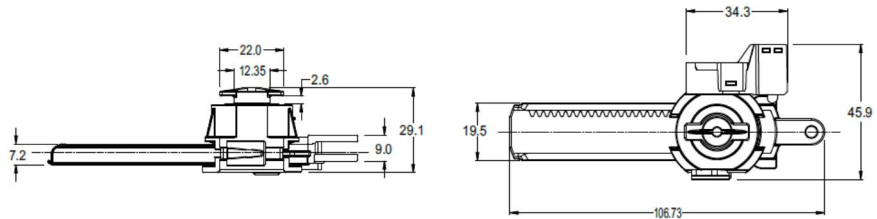
Torque at 20 rpm, 23°C 2.2-12Ncm

Model:PR-DH010



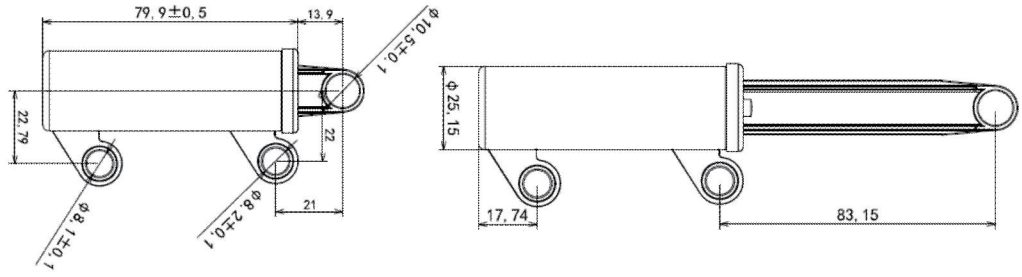
Torque at 20 rpm, 23°C 2.2-12Ncm

Model:PR-H24



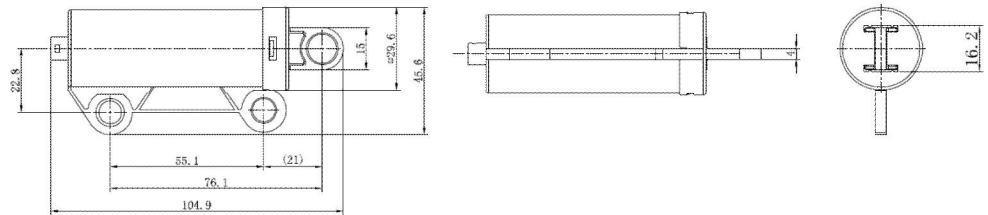
Material ABS/ POM/ Spring/ Silicone Oil

Model:PR-DI001



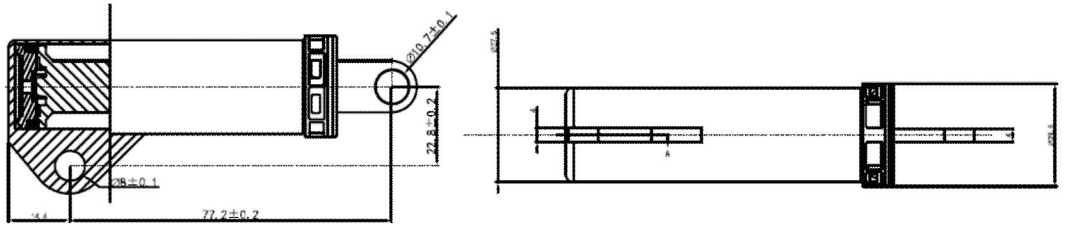
Body Material	Pull rod Material	Cap Material	Static Storage Temperature
POM	POM	PA66	-30°C-85°C
Opening time at 1.27Kg, 50mm		1.5S±0.4	

Model:PR-DI002



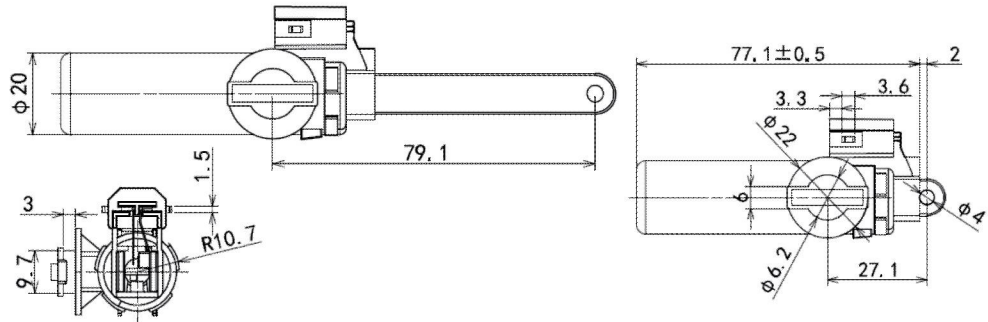
Body Material	Pull rod Material	Cap Material	Piston Material	Air valve
POM	POM	PP	POM	VMQ
Static Storage Temperature		Opening time at 2.2Kg, 50mm		
-30°C-75°C		3.0S±1.0		

Model:PR-DI003



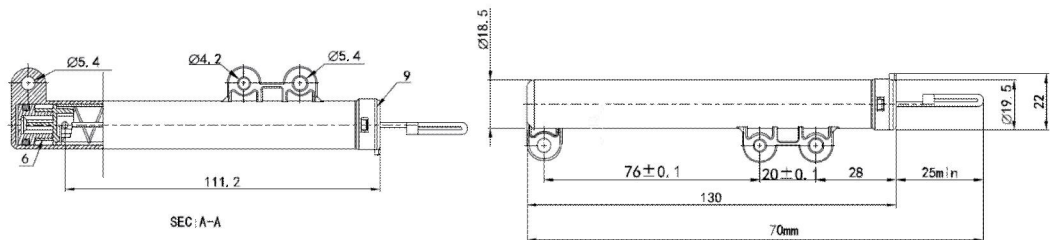
Body Material	Pull rod Material	Cap Material	Piston Material	Air valve
POM	POM	PP	POM	VMQ
Static Storage Temperature		Force at 23°C 32mm, running time is 5.55'S-1.2'S		
-30°C-90°C		4N – 8N		

Model:PR-DI005



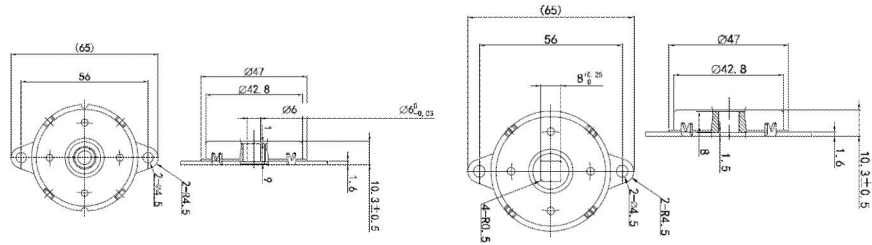
Body Material	Pull rod Material	Cap Material	Sealing ring Material	Air valve
ABS	POM	POM	POM	PA6+GF
Static Storage Temperature		Opening time at 1Kg, 50mm		
-30°C-85°C		2'S – 3'S		

Model:PR-DIB001



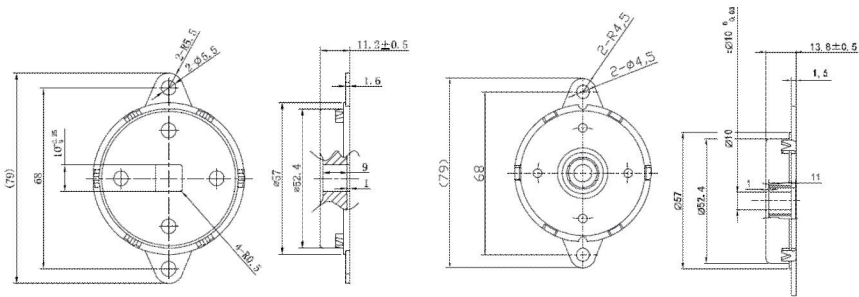
Material	Body	Piston base	Gasket	Sealing ring	Air valve piece	Cap	Spring	Drawstring
	POM	POM	EPDM	FKM	Tin bronze	POM	SWP-B	PES
Static Storage Temperature		Force at 23°C 55mm, running time is 2.4'S-0.4'S						
-30°C – 90°C		13N – 30N						

Model:PR-DM002



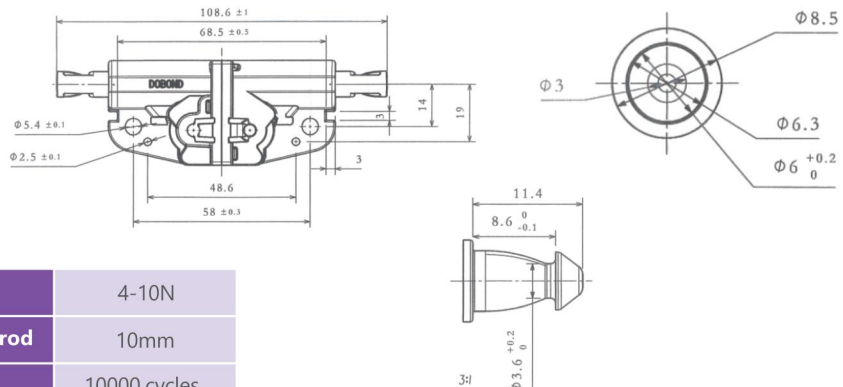
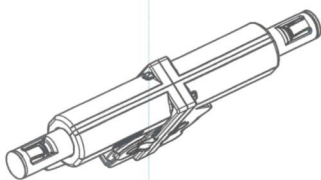
Body Material	Rotation Shaft	Oil	Static Storage Temperature
Iron (SPFC)	PA66+GF	Silicone Oil	-10°C-50°C
Maximum Frequency Of Use	Torque		
12 cycles/min	1.0 - 2.0N.m		

Model:PR-DM003



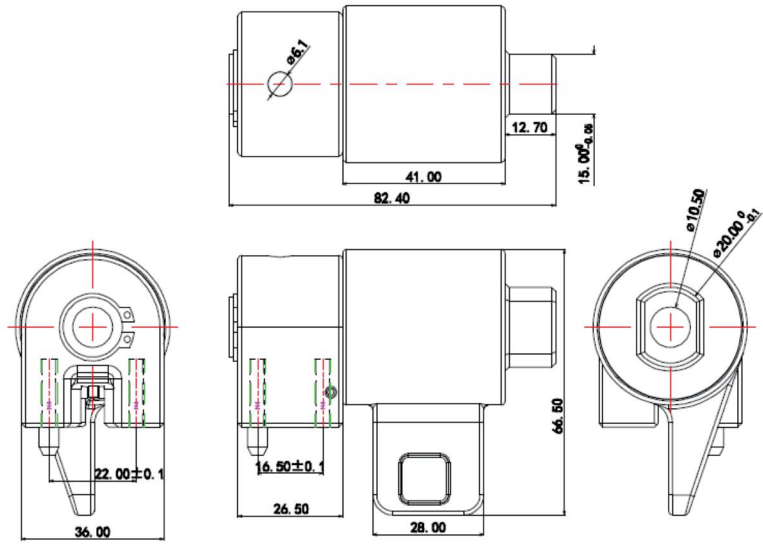
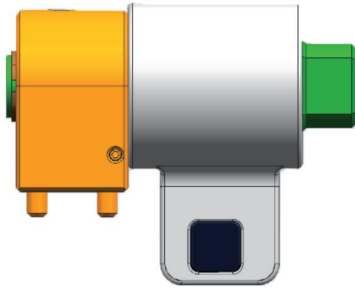
Body Material	Rotation Shaft	Oil	Static Storage Temperature
Iron (SPFC)	PA66+GF	Silicone Oil	-10°C-50°C
Maximum Frequency Of Use	Torque		
12 cycles/min	3.0 - 4.7N.m		

Model:I080010001

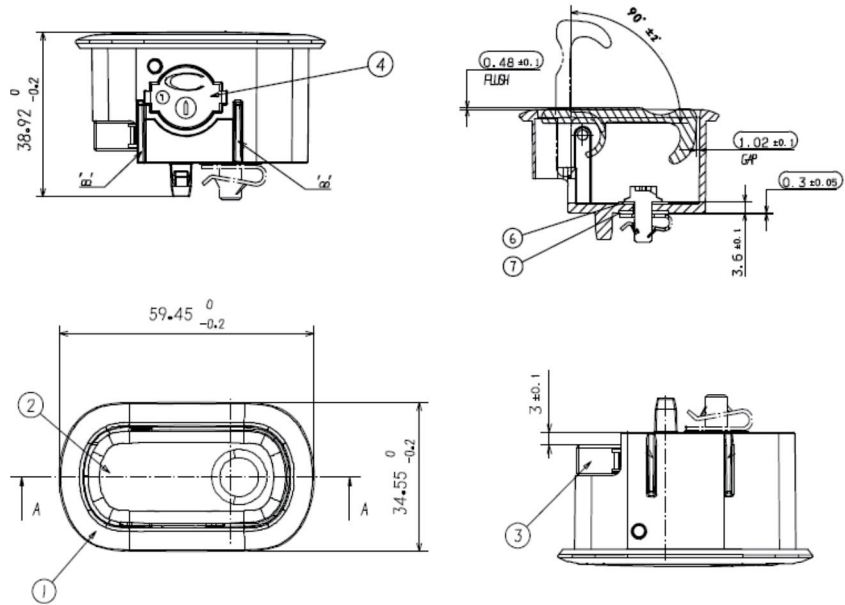
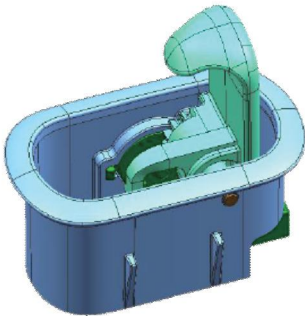


Lock rod unilateral pressing force	4-10N
Maximum telescopic amount of lock rod	10mm
Endurance test	10000 cycles
Ambient emperature	23±2°C

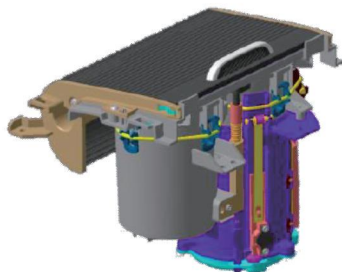
Clutch



Coat hook



Lifting cup holder







## Delight Your Consumers With Amazing Design

---

### China



Manufacturing Location : Dongguan、 Shanghai  
Email:charles.chao@peir-hk.com

### Hong Kong



Head office : 1st Floor, Winbase Centre, 208 Queen's Road  
Central, HongKong  
Email : charles.chao@peir-hk.com

### Mexico



Address: Chihuahua, Mexico  
Email: valeria.gomez@peir-hk.com

### India



Address: Greater Noida, India  
Email: abhishek.pandey@peir-hk.com

### Brazil



Address: São Paulo, Brazil  
Email: info@peir-hk.com