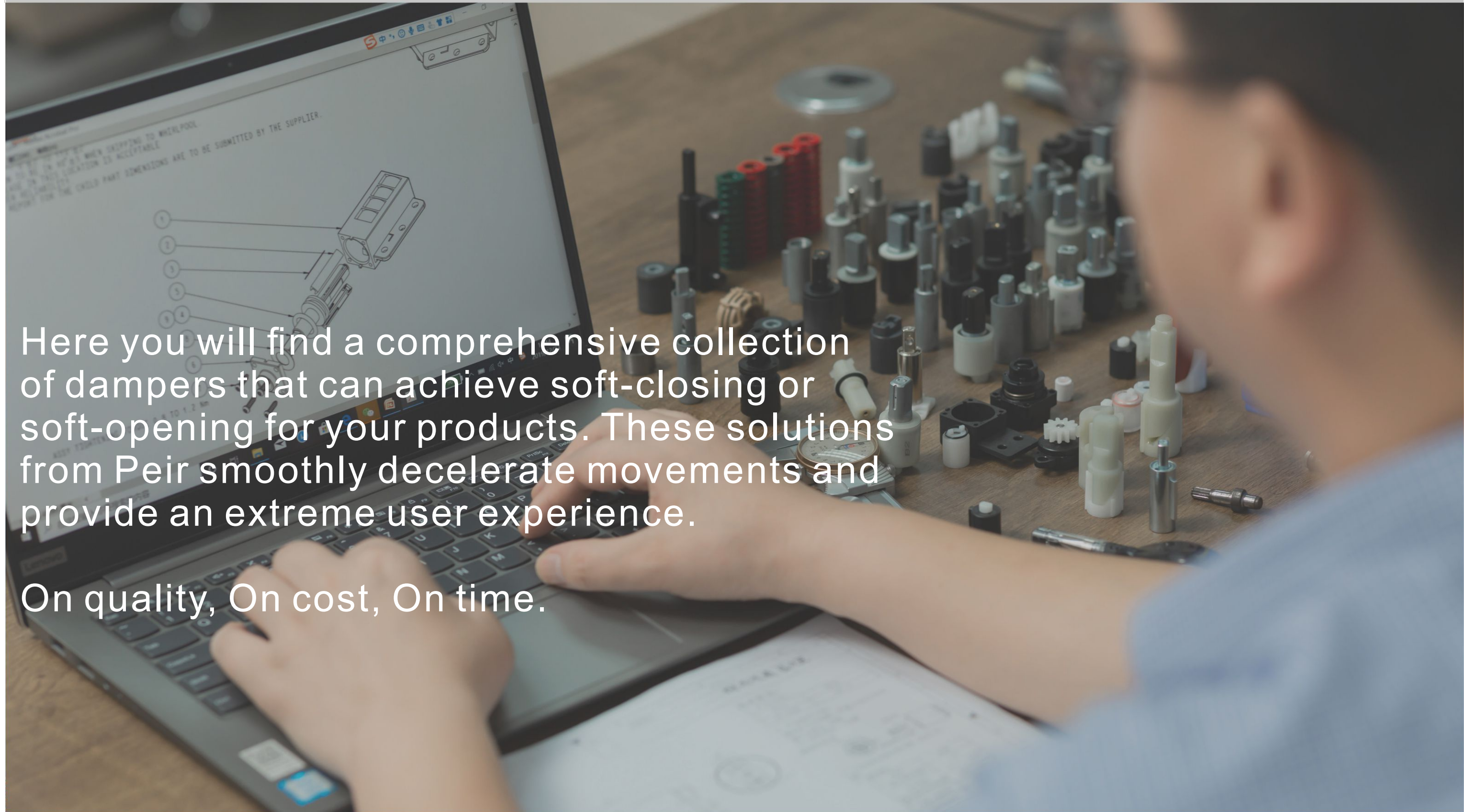


Rotary Dampers

Peir

A person is shown from the side, working at a desk. They are using a laptop which displays a technical diagram of a damper assembly with numbered callouts. The desk is cluttered with numerous small, various mechanical parts, including screws, bolts, and damper components. The person's hands are on the laptop keyboard.

Here you will find a comprehensive collection of dampers that can achieve soft-closing or soft-opening for your products. These solutions from Peir smoothly decelerate movements and provide an extreme user experience.

On quality, On cost, On time.

PRODUCT FAMILIES



Vane Damper(Plastic body)

Diameter 10 to 22mm
 Torque up to 90KGF.CM
 Max rotate angle: 360 degree
 One way or two way damping
 Lifecycles up to 30,000



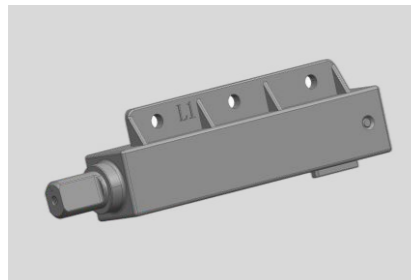
Vane Damper(Zinc alloy)

Diameter 12 to 18mm
 Torque up to 40KGF.CM
 Max rotate angle: 110 degree
 One way or two way damping
 Lifecycles up to 30,000



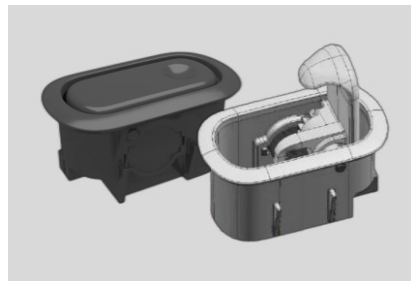
Barrel Damper

Diameter 8 to 20mm
 Torque up to 23,000GF.CM
 Max rotate angle: 360 degree
 One Way or two way damping
 Lifecycles up to 60,000



High Torque Damper(With assist force)

Diameter 16 to 21mm
 Torque up to 80KGF.CM
 *Especially for the heavy lid
 Max rotate angle: 110 degree
 One Way damping
 Lifecycles up to 30,000



Sub-assembly Unit

The sub-assembly includes rack damper, air damper, and coat hook, which are mostly used in the automobile, like the glove compartment.



Gear Damper(Screwable)

Diameter 10 to 25mm
 Torque up to 4500GF.CM
 Max rotate angle: 360 degree
 One way or two way damping
 Lifecycles up to 60,000



Gear Damper(Snap-in)

Diameter 10 to 15mm
 Torque up to 1200GF.CM
 Max rotate angle: 360 degree
 One way or two way damping
 Lifecycles up to 50,000



Disc Damper

Diameter 47 to 57mm
 Torque up to 6.0 Nm
 Max rotate angle: 360 degree
 One way or two way damping
 Lifecycles up to 50,000

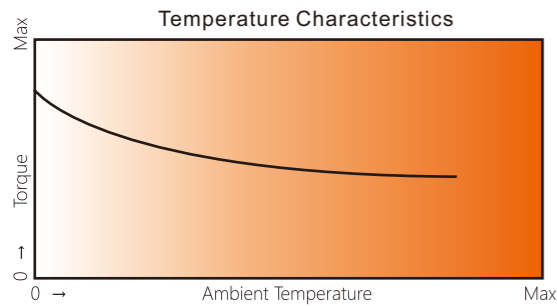


Square Damper(Screwable)

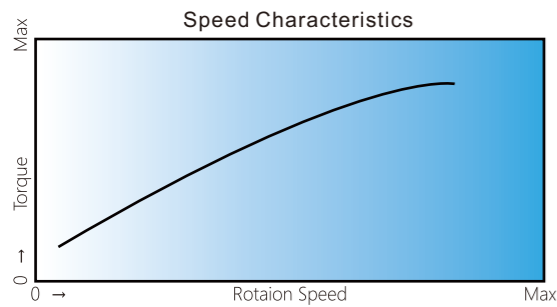
Diameter 17.5 to 24mm
 Torque up to 90KGF.CM
 Max rotate angle: 110 degree
 One way damping
 Lifecycles up to 50,000



Rotary Damper Temperature & Speed Characteristics



Temperature Characteristics
The torque of the rotary damper varies according to the temperature. The higher temperature for the lower torque; The lower temperature for the higher torque. When the temperature returns to normal, the damper characteristics will return to normal as well.



Speed Characteristics
The torque of the rotary damper varies according to rpm. In general, if the rpm goes up, the torque increases; If the rpm goes down, the torque decreases. In addition, please note that the starting torque slightly differs from the rated torque. (The torque value indicated in the product data is measured at the rotation speed of 20r/min)

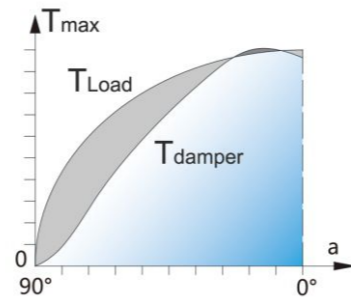
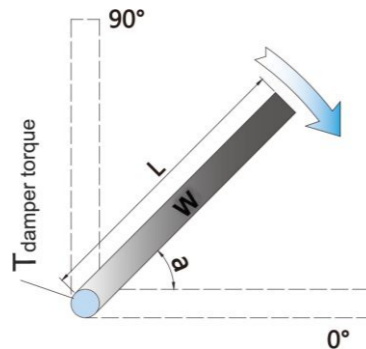
Torque calculation method in different scenarios

1. Controlled slow closing down. (From 90° - 0°)

Shown on the right figure, the flat starts to close down from position of less than 90 to horizon position.

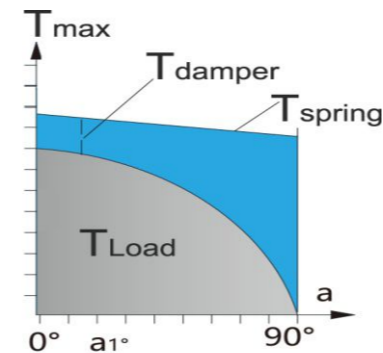
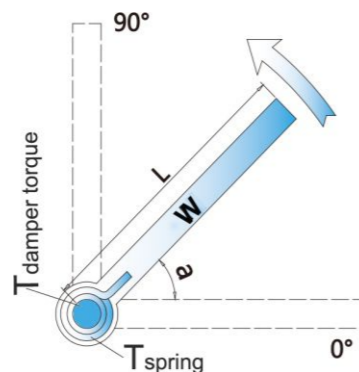
$$T = (W * g) * (L/2) * (\cos a)$$

Example:
W=2KG, L=300mm
 $T_{max} = (2 * 9.8) * (0.3/2) = 2.94 \text{ Nm}$
 $T_{damper} = 0 - 3.0 \text{ Nm}$

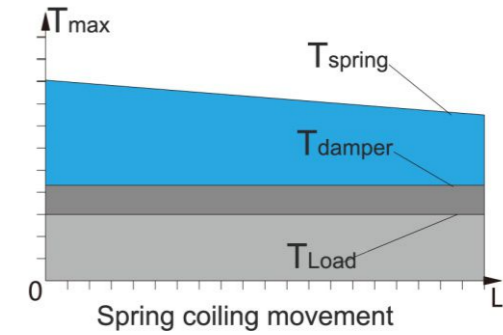


2. Damper and springs achieve soft opening. (0° ~ 90°)

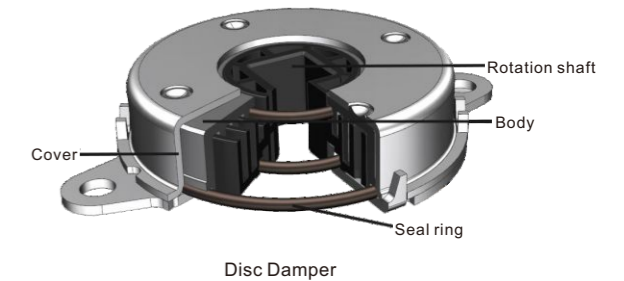
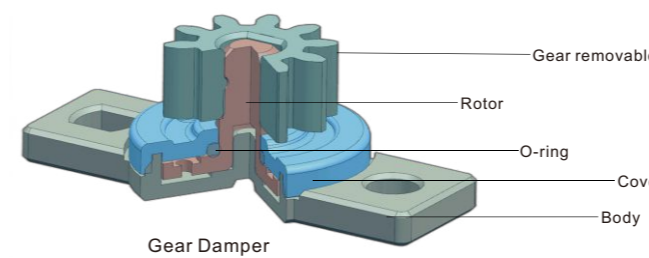
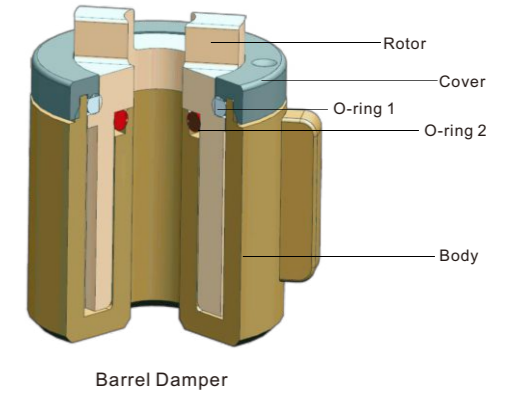
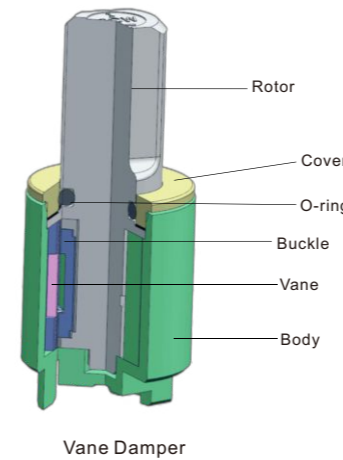
As the right picture shows, the flat open along the axis when the spring exerts force on it. The graph below shows the relation among spring Force T, gravity of flat W and the resistance of rotation of damper:



Example:
W=1 KG, L=200mm
 $T_{load} = 1 * 9.8 * (0.2/2) = 0.98 \text{ Nm}$
 $T_{spring} = 1.2 \sim 0.5 \text{ Nm}$
 $T_{damper} \leq T_{spring} - T_{Load}$
 $= (1.2 - 0.98) \text{ Nm} \sim (0.5 - 0) \text{ Nm}$
 $= 0.22 \sim 0.5 \text{ Nm}$



Note:
T: Torque.
L/2: 1/2 the length of the cover from the pivot to the end (Center of gravity).
W: Actual weight of lid.
a: Max angle between the cover and horizontal position.



Application



BMW 535Li Central Double Armrest
(FB Series Barrel Damper)



Range Rover EVOQUE sunglass Case
(CD Series and Push-Push Latch)



Hidden socket



Coffee machine



EV charger



Auto Interior
(Handle, Sunglass box...)



Kettle



Piano cover



Rice cooker



Sanitary

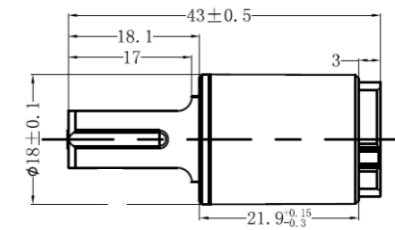
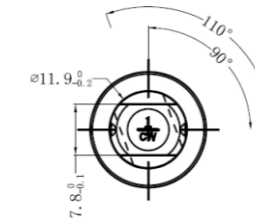


Trash can



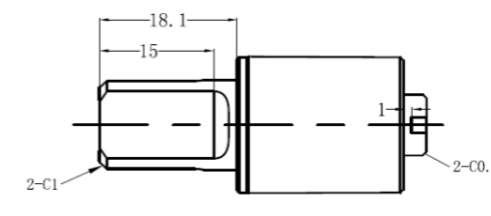
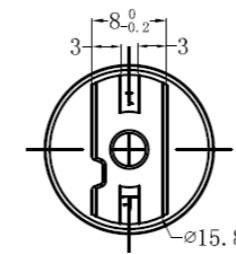
Washing machine

Model: PR-T095A-One way

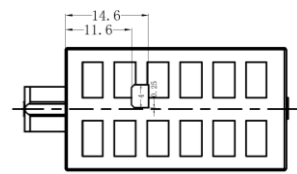
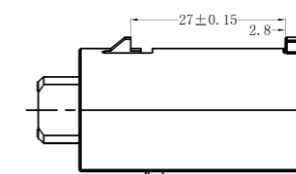
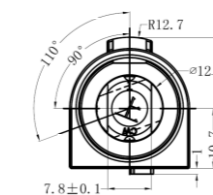
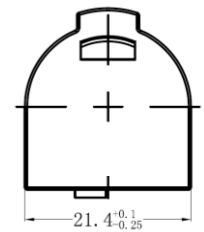
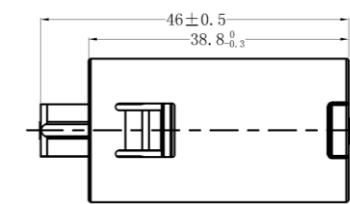
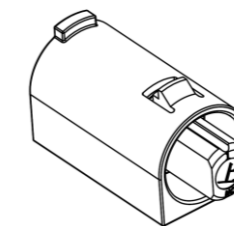


Torque	5-45 KGf.CM
---------------	-------------

Max Opening Angle	110°
Static Storage Temperature	-40°C - 110°C
Dynamic Working Temperature	-5°C - 50°C
Body Material	PBT/ PA66
Shaft Material	Zinc Alloy
Oil	Silicone Oil



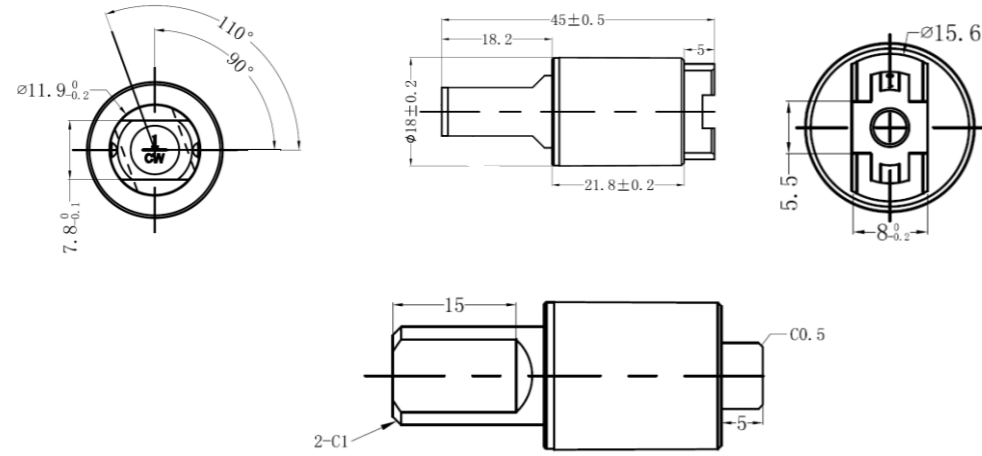
Model: PR-T095B-One way



Torque	5-45 KGf.CM
---------------	-------------

Max Opening Angle	Static Storage Temperature	Dynamic Working Temperature	Body Material	Shaft Material	Oil
110°	-40°C - 110°C	-5°C - 50°C	PBT	PA66/ Zinc Alloy	Silicone Oil

Model: PR-T095C-One way

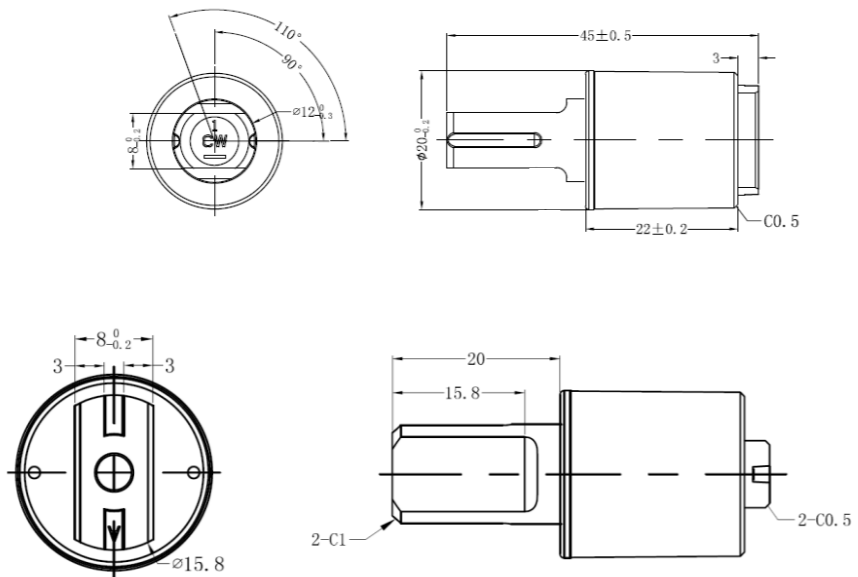


Torque
5-45 KGf.cm

Max Opening Angle	Static Storage Temperature	Dynamic Working Temperature	Body Material	Shaft Material	Oil
110°	-40°C - 110°C	-5°C - 50°C	PBT/ PA66	Zinc Alloy	Silicone Oil

Remarks:
Compared with T095C, T095F is different in working angle 0-180°; T095M is of shaft diameter 7.8±0.1mm.

Model: PR-T098D-One way

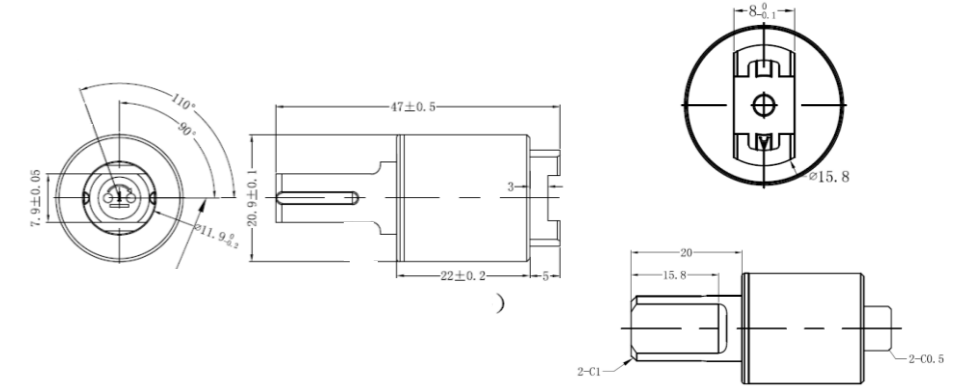


Torque
10-65 KGf.cm

Max Opening Angle	Static Storage Temperature	Dynamic Working Temperature	Body Material	Shaft Material	Oil
110°	-40°C - 110°C	-5°C - 50°C	PBT/ PA66	Zinc Alloy	Silicone Oil

Remarks:
Compare with T098D, body diameter of T098A is 19.6mm. The end attachment of T098C is 5mm in height.

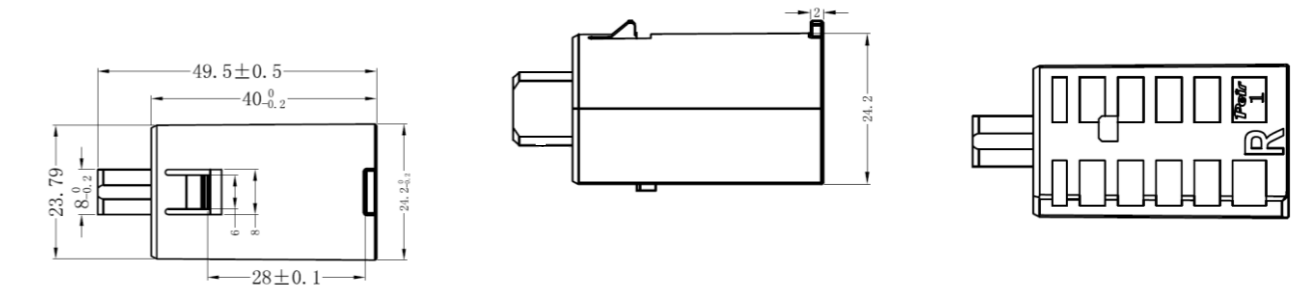
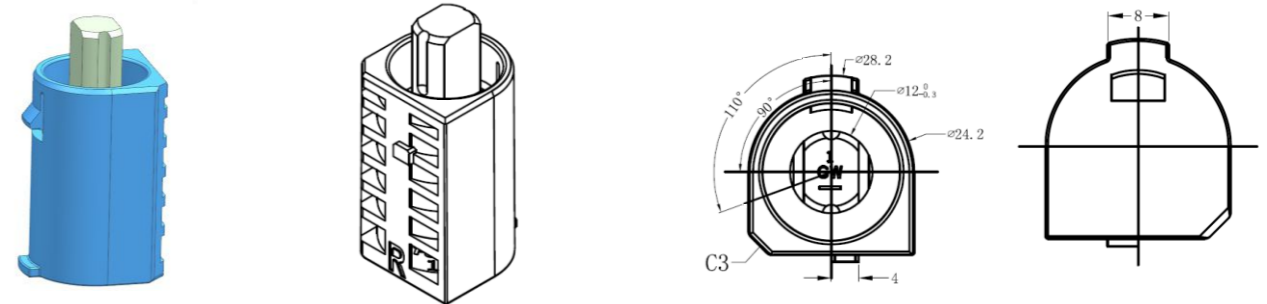
Model: PR-T098E-One way



Torque
10-65 KGf.cm

Max Opening Angle	Static Storage Temperature	Dynamic Working Temperature	Body Material	Shaft Material	Oil
110°	-40°C - 110°C	-5°C - 50°C	PA66	Zinc Alloy	Silicone Oil

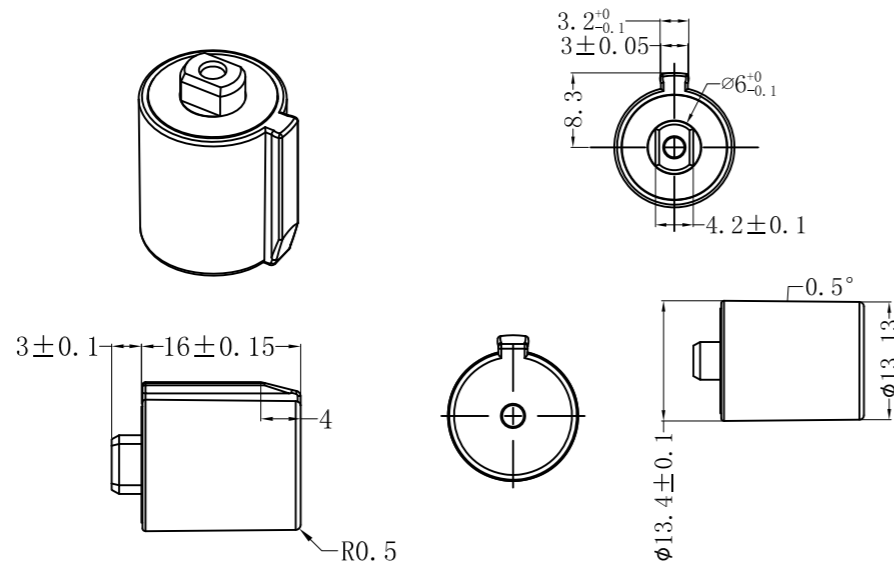
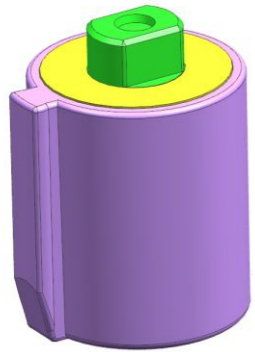
Model: PR-T098H-One way



Torque
10-65 KGf.cm

Max Opening Angle	Static Storage Temperature	Dynamic Working Temperature	Body Material	Shaft Material	Oil
110°	-40°C - 110°C	-5°C - 50°C	POM	Zinc Alloy	Silicone Oil

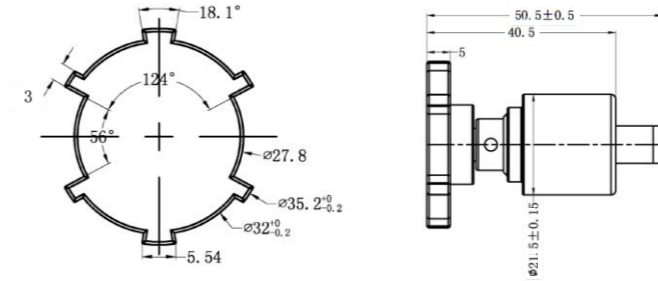
Model: PR-T025-Two way



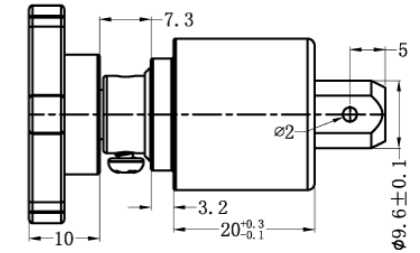
Torque 500-5000 GF.CM

Static Storage Temperature	Dynamic Working Temperature	Body Material	Shaft Material	Oil
-40°C-110°C	-5°C-50°C	PC	POM	Silicone Oil

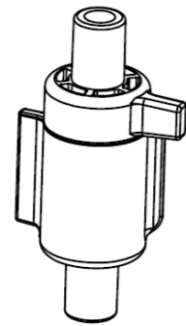
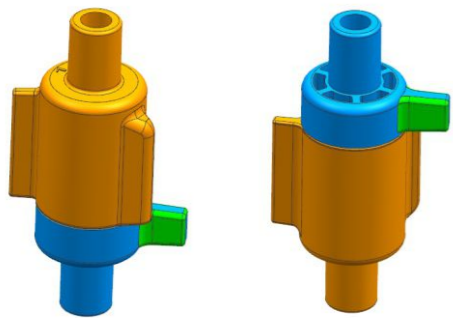
Model: PR-T058A-One/Two way (For curtain, etc)



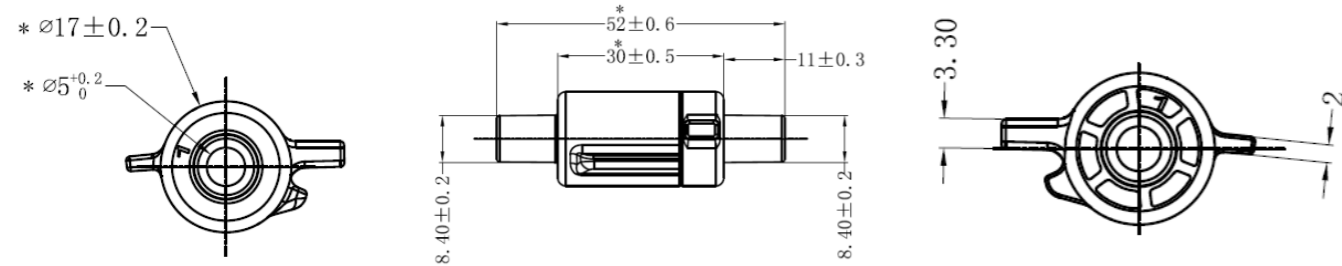
Torque	500-3000 GF.CM
Static Storage Temperature	-40°C - 110°C
Dynamic Working Temperature	-5°C - 50°C
Body Material	PC
Shaft Material	POM
Oil	Silicone Oil



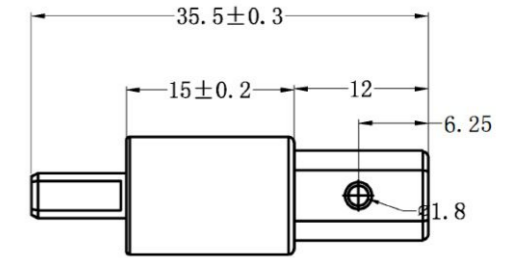
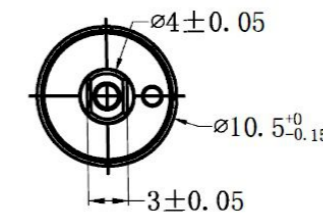
Model: PR-T051A-Two way (For front load washer, etc)



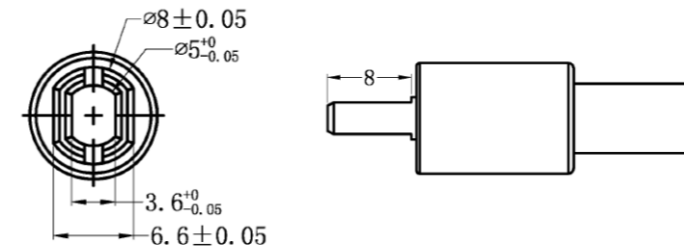
Torque	2000-5000 GF.CM
Static Storage Temperature	-40°C - 110°C
Dynamic Working Temperature	-5°C - 50°C
Body Material	PA66 Gray
Shaft Material	PA66 Gray
Oil	Silicone Oil



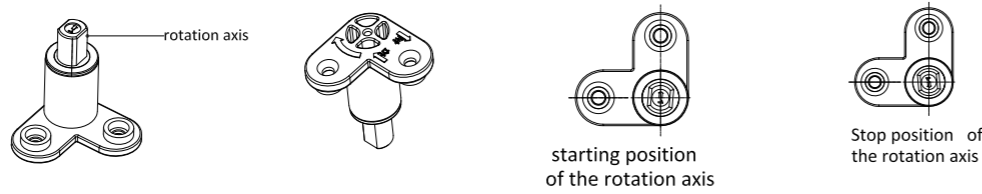
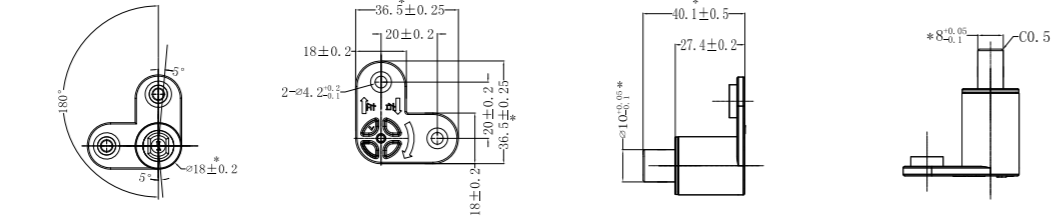
Model: PR-T060A-One/Two way (For curtain, etc)



Torque	80-300 GF.CM
Static Storage Temperature	-40°C - 110°C
Dynamic Working Temperature	-5°C - 50°C
Body Material	PC
Shaft Material	POM
Oil	Silicone Oil



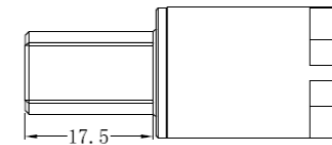
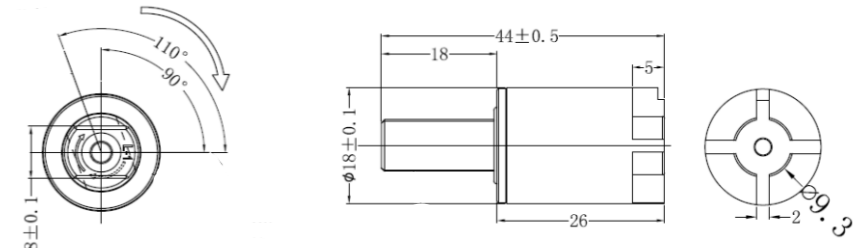
Model: PR-T069A-Two way (For refrigerator, etc)



Torque
3-15 KGf.CM

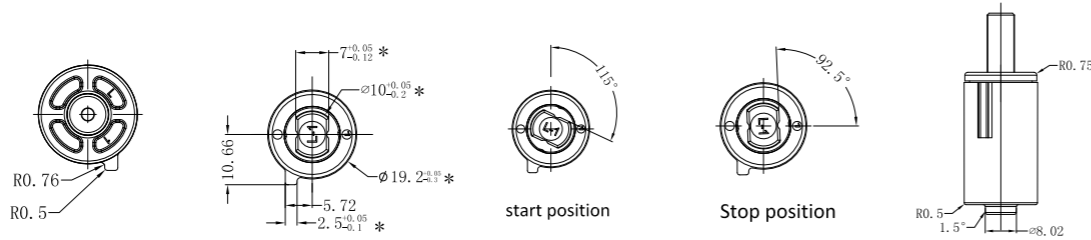
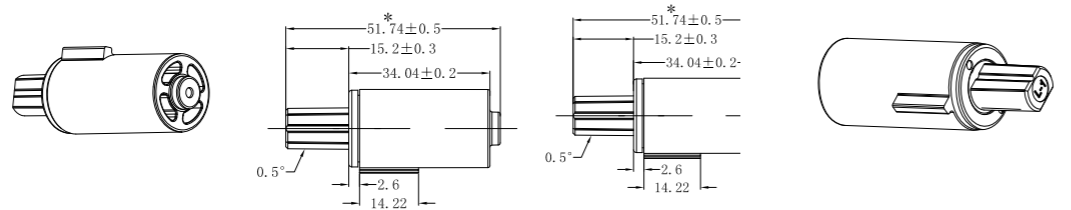
Max Opening Angle	Static Storage Temperature	Dynamic Working Temperature	Body Material	Shaft Material	Oil
190°	-40°C - 110°C	-5°C - 50°C	PA66-GF	Zinc Alloy	Silicone Oil

Model: PR-T086A-One way



Torque	10-40 KGf.CM
Max Opening Angle	110°
Static Storage Temperature	-40°C - 110°C
Dynamic Working Temperature	-5°C - 50°C
Body Material	PBT
Shaft Material	Zinc Alloy
Oil	Silicone Oil

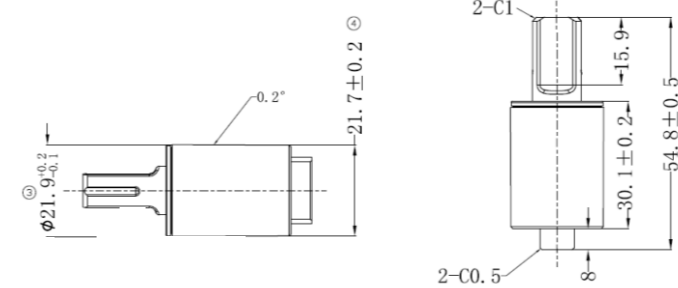
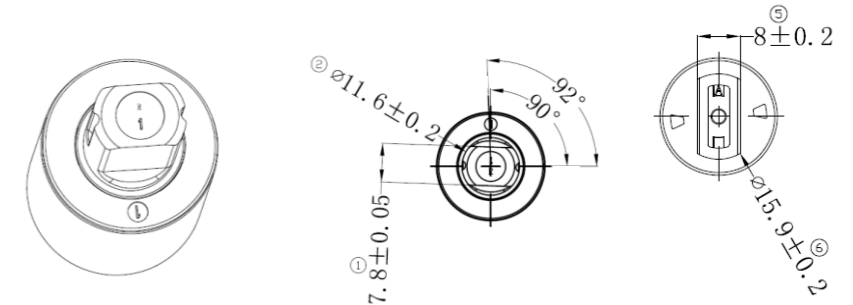
Model: PR-T083A-One way



Torque
5-45 KGf.CM

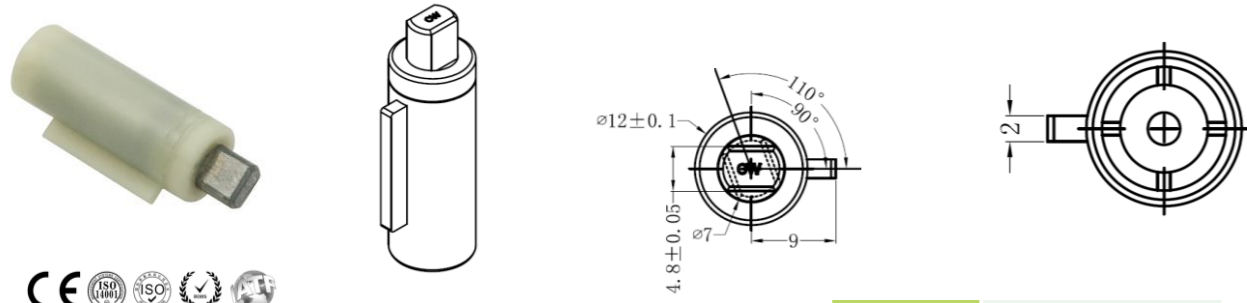
Max Opening Angle	Static Storage Temperature	Dynamic Working Temperature	Body Material	Shaft Material	Oil
115°	-40°C - 110°C	-5°C - 50°C	PA66-GF	Zinc Alloy	Silicone Oil

Model: PR-T097A-One way



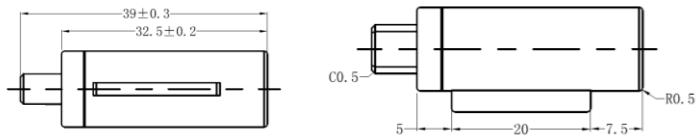
Torque	30-90 KGf.CM
Max Opening Angle	92°
Static Storage Temperature	-40°C - 110°C
Dynamic Working Temperature	-5°C - 50°C
Body Material	PA66
Shaft Material	Zinc Alloy
Oil	Silicone Oil

Model:PR-T099B-One way

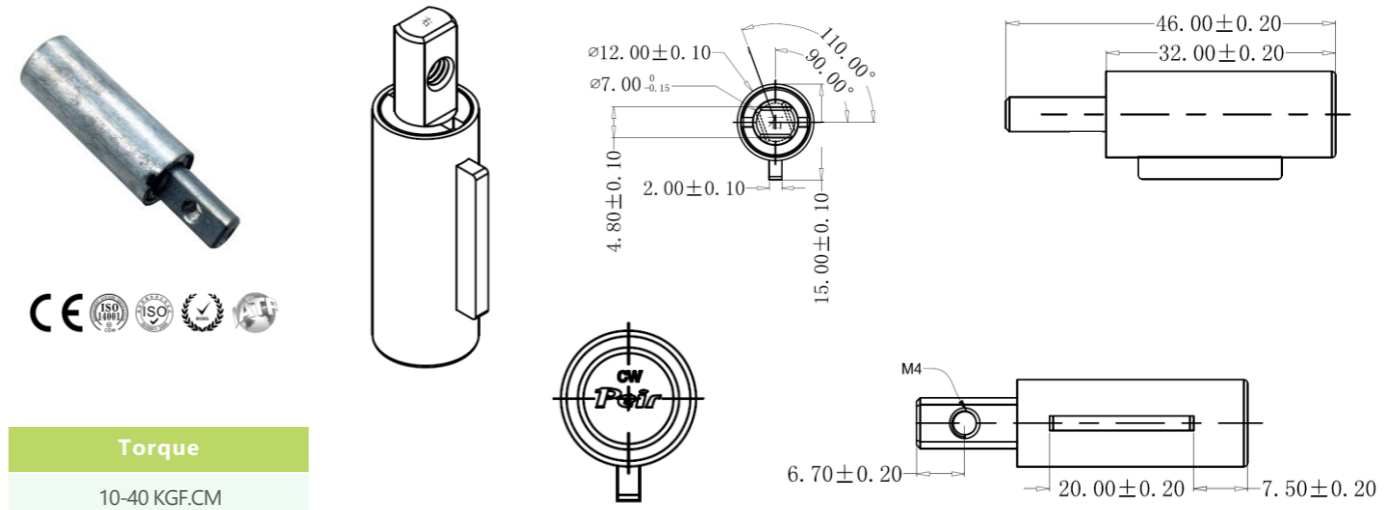


Torque	3-15KGF.CM
---------------	------------

Max Opening Angle	110°
Static Storage Temperature	-40°C - 110°C
Dynamic Working Temperature	-5°C - 50°C
Body Material	PA66
Shaft Material	Zinc Alloy
Oil	Silicone Oil



Model: PR-T099E-One way



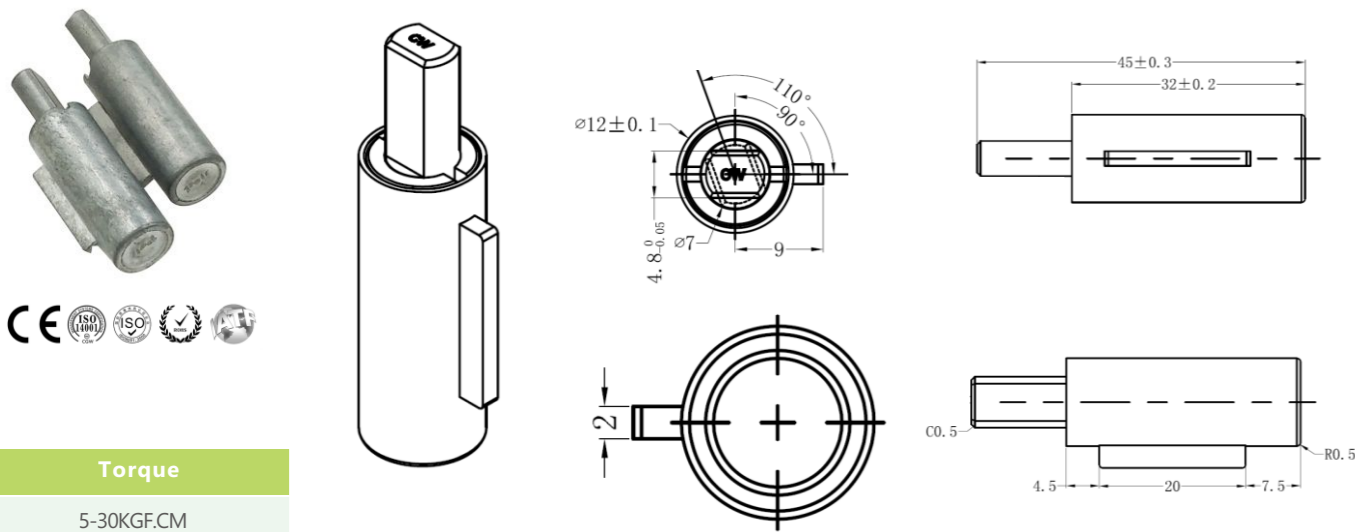
Torque	10-40 KGF.CM
---------------	--------------

Max Opening Angle	Static Storage Temperature	Dynamic Working Temperature	Body Material	Shaft Material	Oil
110°	-40°C - 110°C	-20°C - 80°C	Zinc Alloy	Zinc Alloy	Silicone Oil

Remarks:

Compared with T099E, the shaft length of T099D is different, with size 12±0.2mm; T099N is different in working angle, 0-100°; T099R is different in the position of threaded hole.

Model:PR-T099C-One way



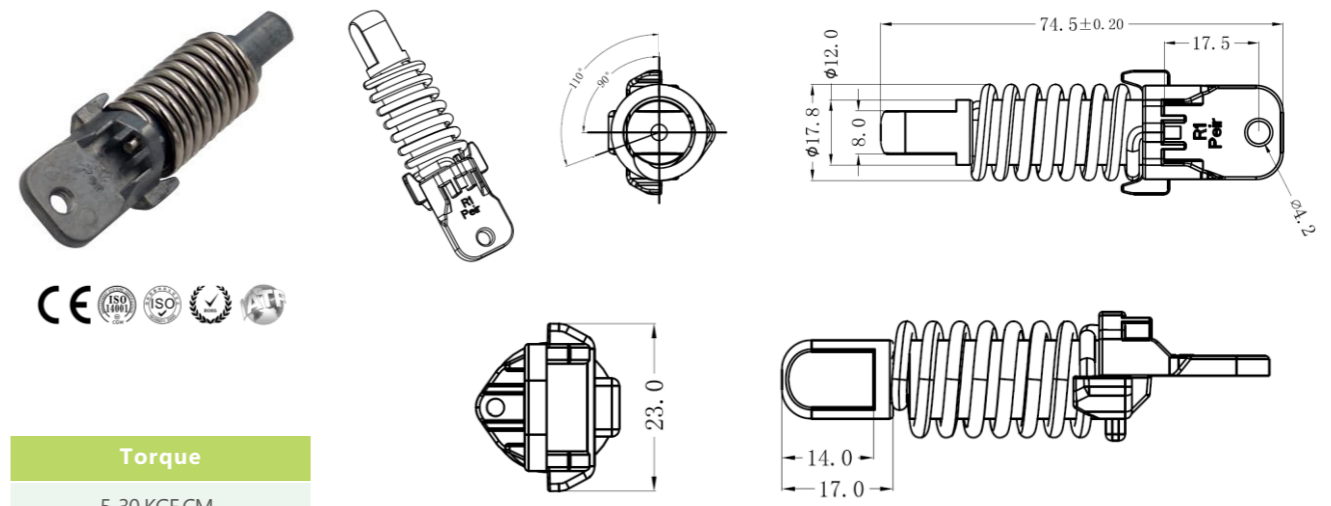
Torque	5-30KGF.CM
---------------	------------

Max Opening Angle	Static Storage Temperature	Dynamic Working Temperature	Body Material	Shaft Material	Oil
110°	-40°C - 110°C	-20°C - 80°C	Zinc Alloy	Zinc Alloy	Silicone Oil

Remarks:

Compared with T099C, the shaft of T099A is shorter, 7mm in length; T099Q is based on C, only special with R angle on rib.

Model: PR-T099G-One way (Spring can provide assistance force.)

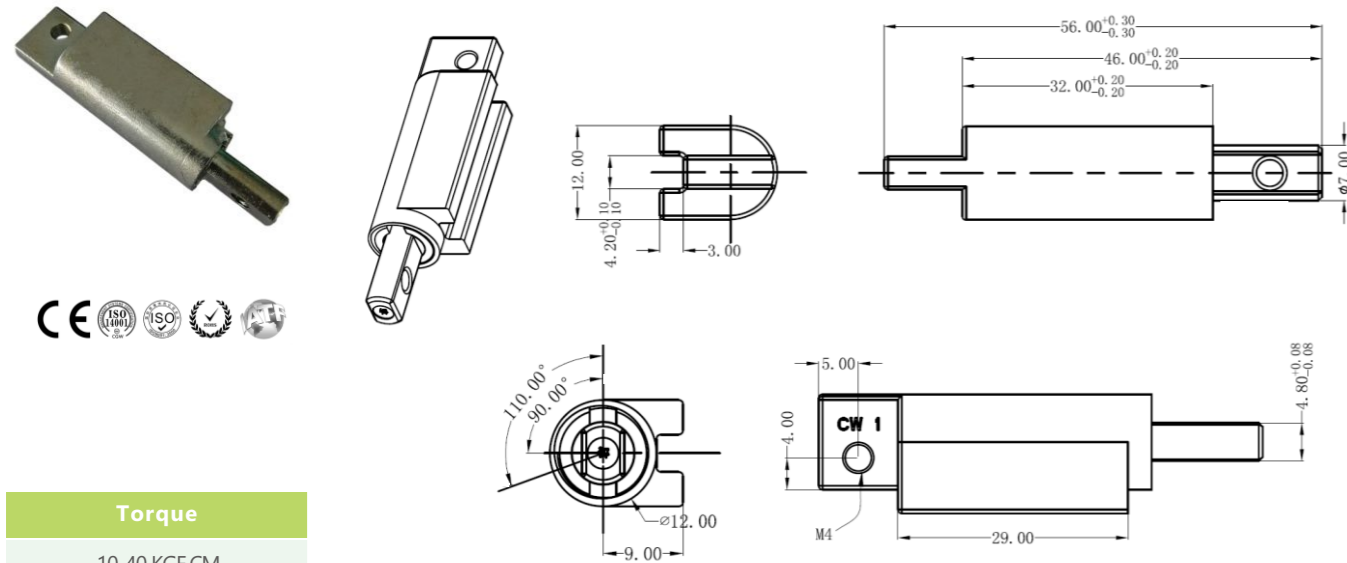


Torque	5-30 KGF.CM
---------------	-------------

Max Opening Angle	Static Storage Temperature	Dynamic Working Temperature	Body Material	Shaft Material	Oil
110°	-40°C - 110°C	-20°C - 80°C	Zinc Alloy	Zinc Alloy	Silicone Oil

Spring	Music Wire 9.25
---------------	-----------------

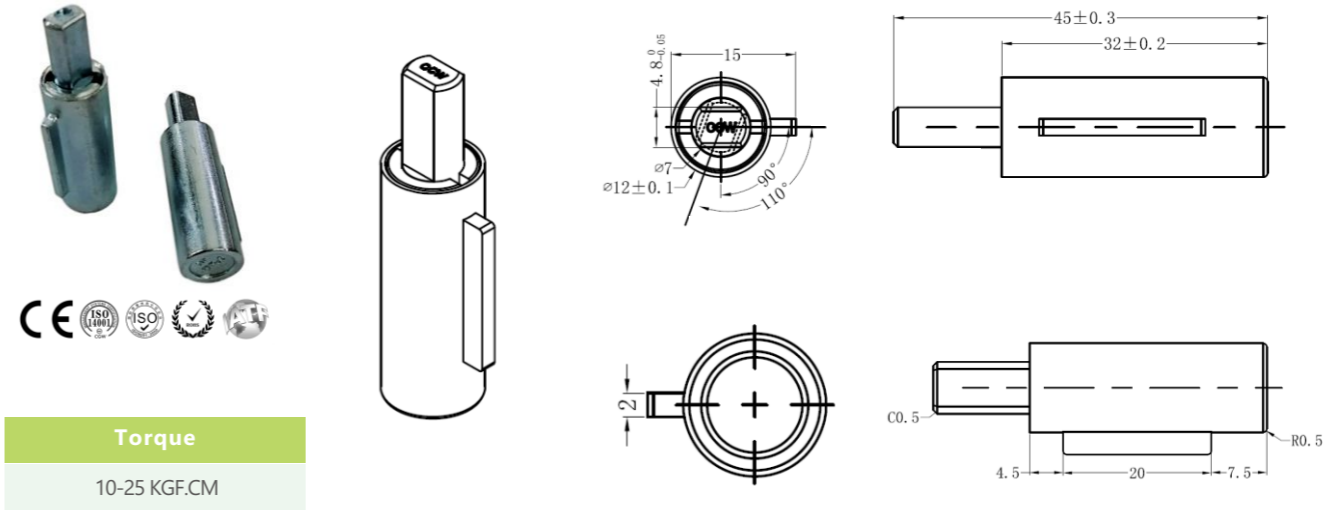
Model: PR-T099K-One way (For dishwasher, etc)



Torque
10-40 KGF.CM

Max Opening Angle	Static Storage Temperature	Body Material	Shaft Material	Oil
110°	-20°C - 80°C	Zinc Alloy	Zinc Alloy	Silicone Oil

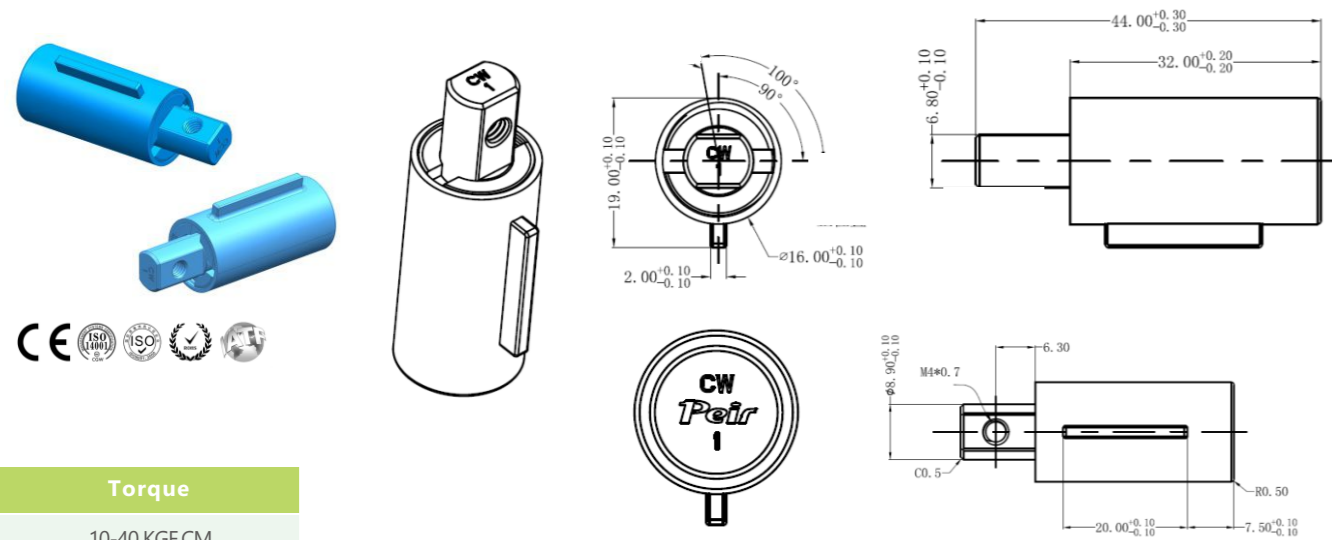
Model: PR-T099S-Two way



Torque
10-25 KGF.CM

Max Opening Angle	Static Storage Temperature	Dynamic Working Temperature	Body Material	Shaft Material	Oil
110°	-40°C - 110°C	-20°C - 80°C	Zinc Alloy	Zinc Alloy	Silicone Oil

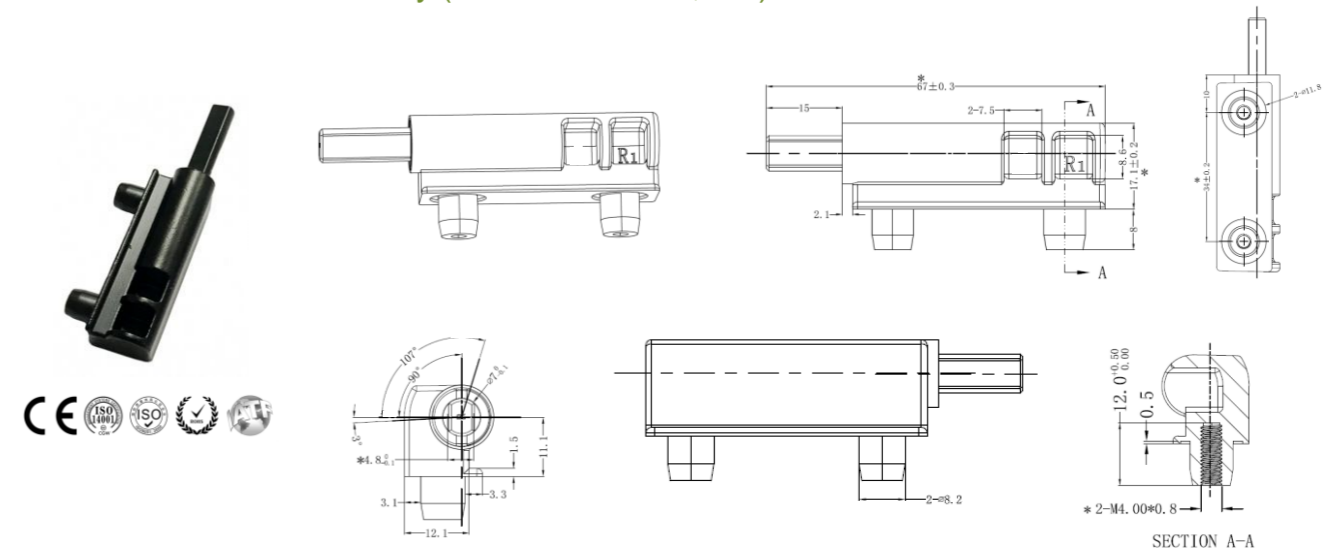
Model: PR-T099M-One way



Torque
10-40 KGF.CM

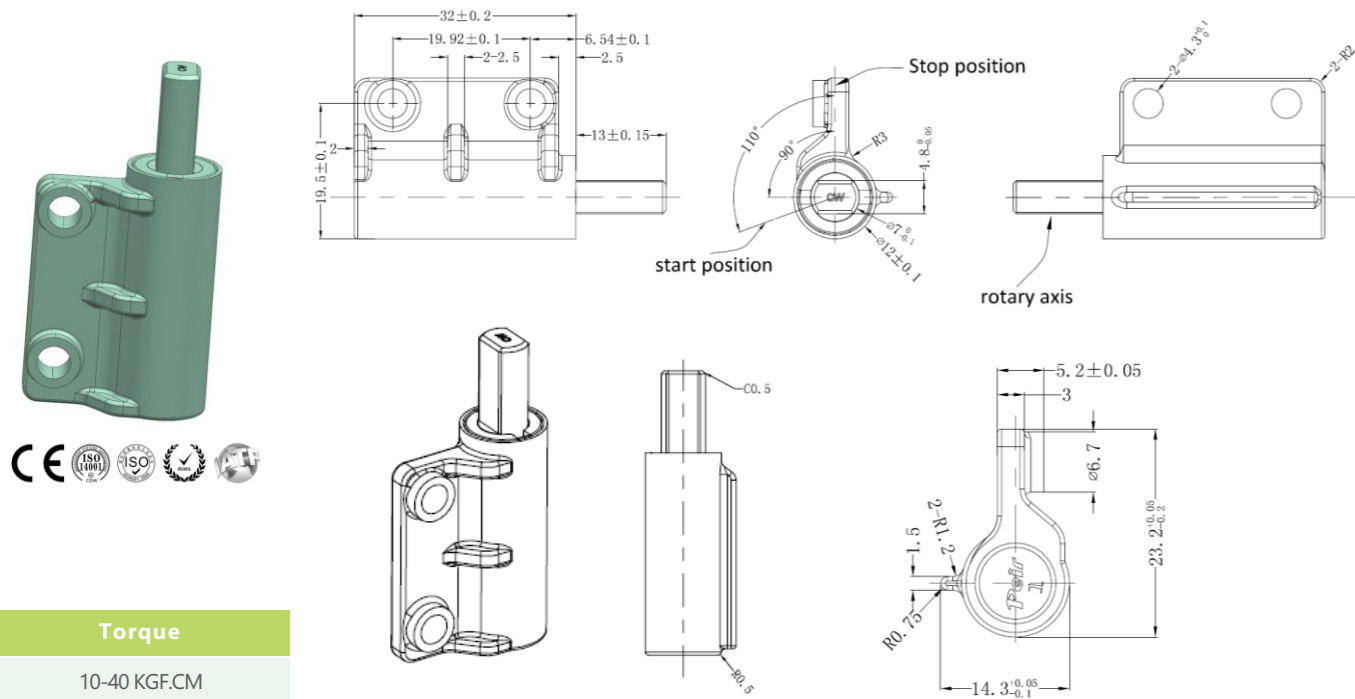
Max Opening Angle	Static Storage Temperature	Dynamic Working Temperature	Body Material	Shaft Material	Oil
100°	-40°C - 110°C	-20°C - 80°C	Zinc Alloy	Zinc Alloy	Silicone Oil

Model: PR-T099T-One way (For dishwasher, etc)



Torque	Max Opening Angle	Static Storage Temperature	Body Material	Shaft Material	Oil
10-40 KGF.CM	107°	-20°C - 80°C	Zinc Alloy	Zinc Alloy	Silicone Oil

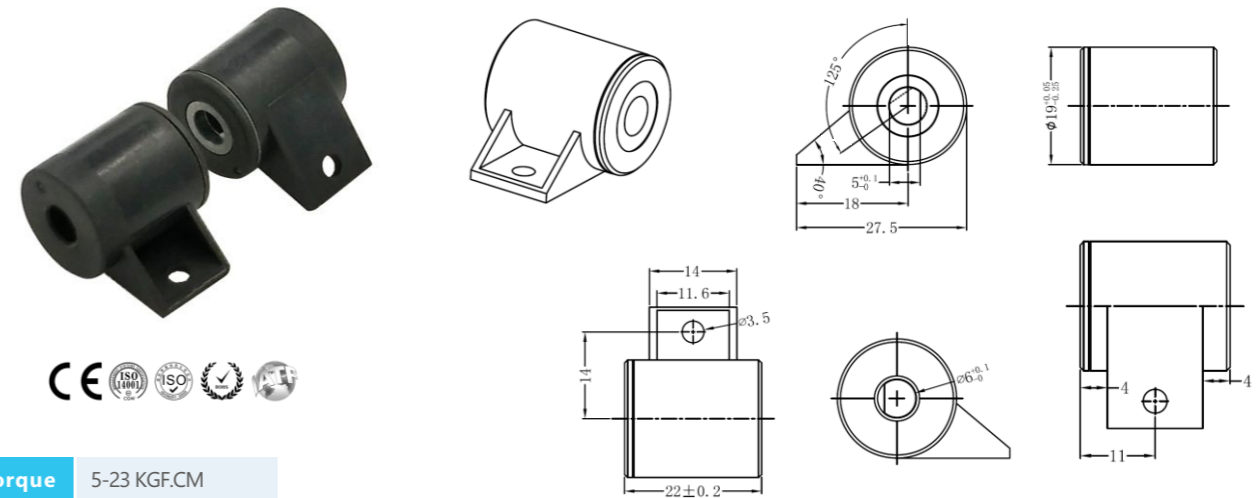
Model: PR-T099W-One way



Torque
10-40 KGF.CM

Max Opening Angle	Static Storage Temperature	Body Material	Shaft Material	Oil
110°	-20°C - 80°C	Zinc Alloy	Zinc Alloy	Silicone Oil

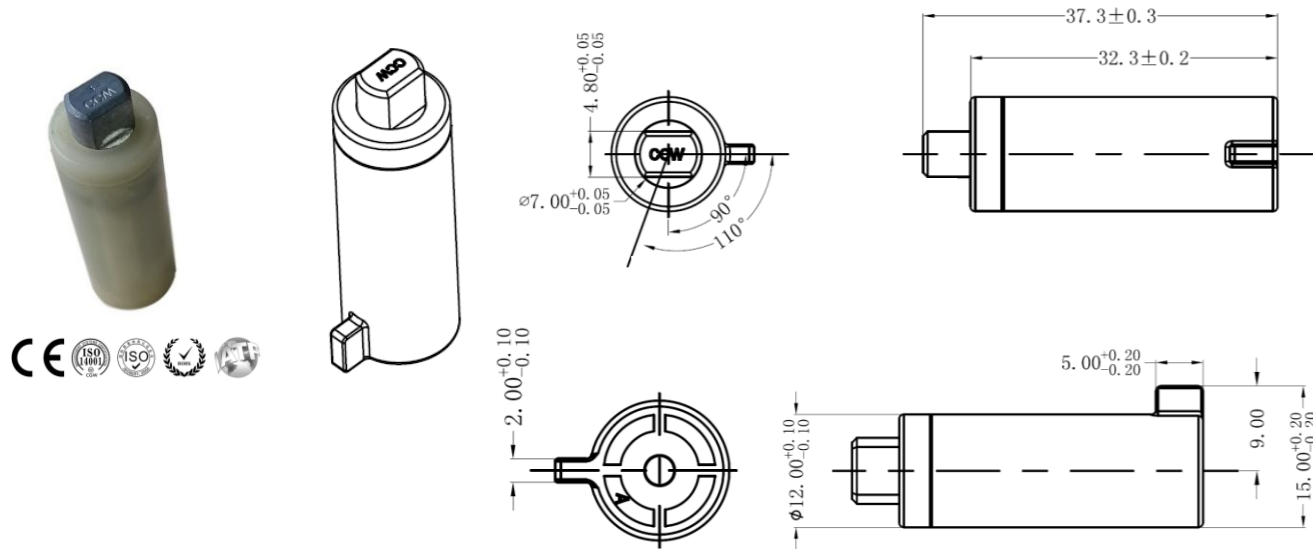
Model: PR-T021A-Two way (For rice cooker, etc)



Torque	5-23 KGF.CM
--------	-------------

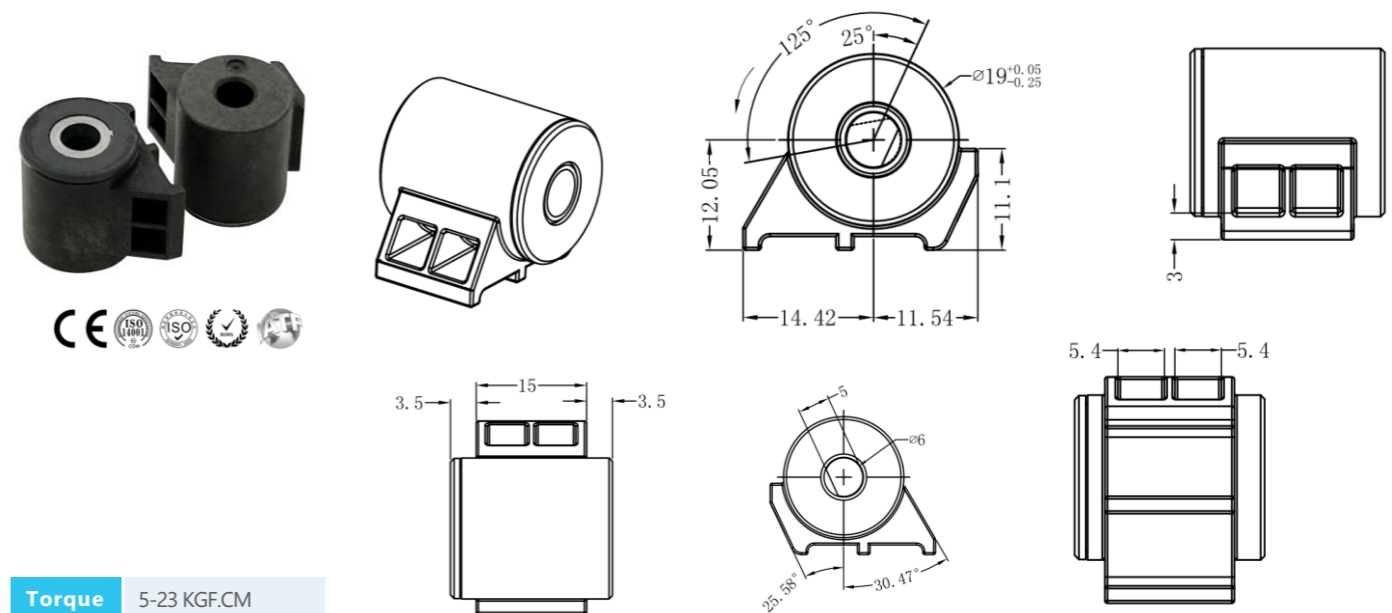
Static Storage Temperature	Dynamic Working Temperature	Body Material	Shaft Material	Oil
-40°C-110°C	-5°C-50°C	PA66	Zinc Alloy	Silicone Oil

Model: PR-T099H-One way



Torque	Max Opening Angle	Static Storage Temperature	Body Material	Shaft Material	Oil
3-15 KGF.CM	110°	-5°C - 50°C	PA66	Zinc Alloy	Silicone Oil

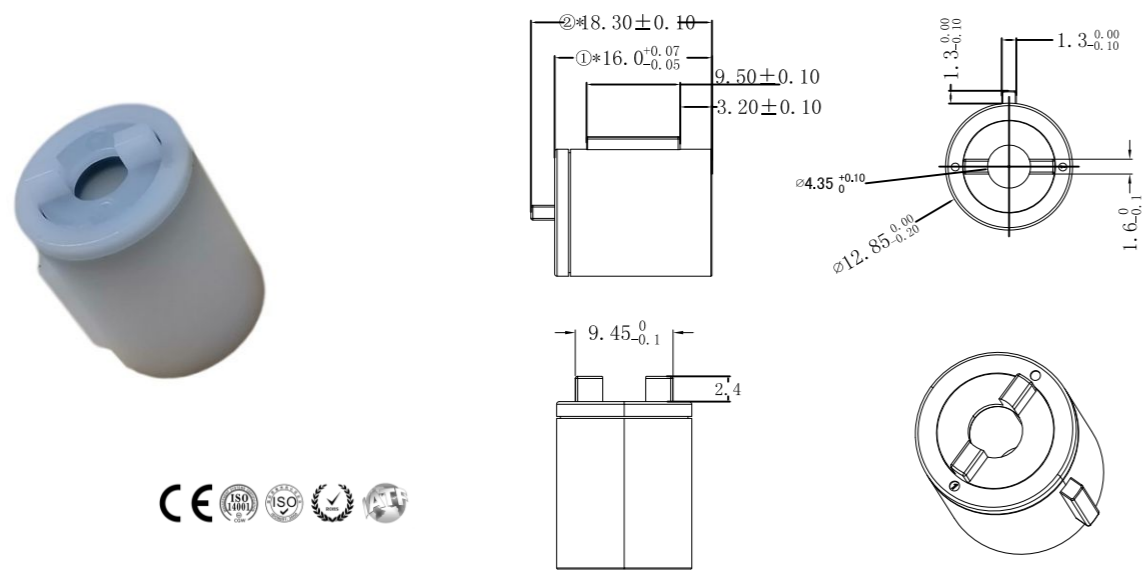
Model: PR-T021B-Two way (For rice cooker, etc)



Torque	5-23 KGF.CM
--------	-------------

Static Storage Temperature	Dynamic Working Temperature	Body Material	Shaft Material	Oil
-40°C-110°C	-5°C-50°C	PA66	Zinc Alloy	Silicone Oil

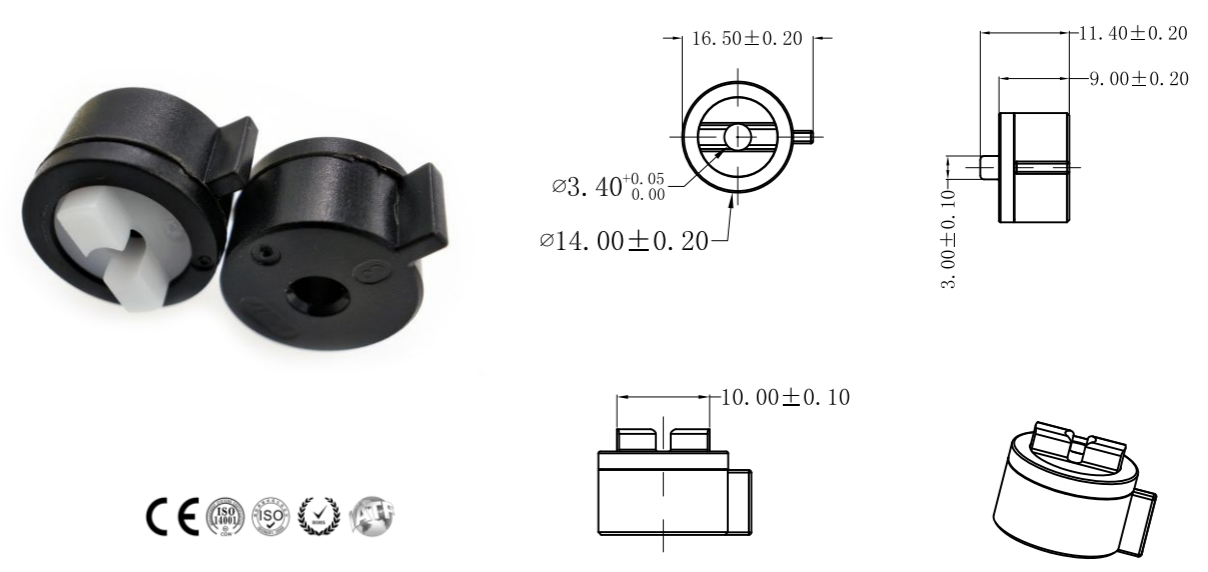
Model: PR-T027A-Two way



Torque 200-2000 GF.CM

Static Storage Temperature	Dynamic Working Temperature	Body Material	Shaft Material	Oil
-40°C-110°C	-5°C-50°C	POM	POM	Silicone Oil

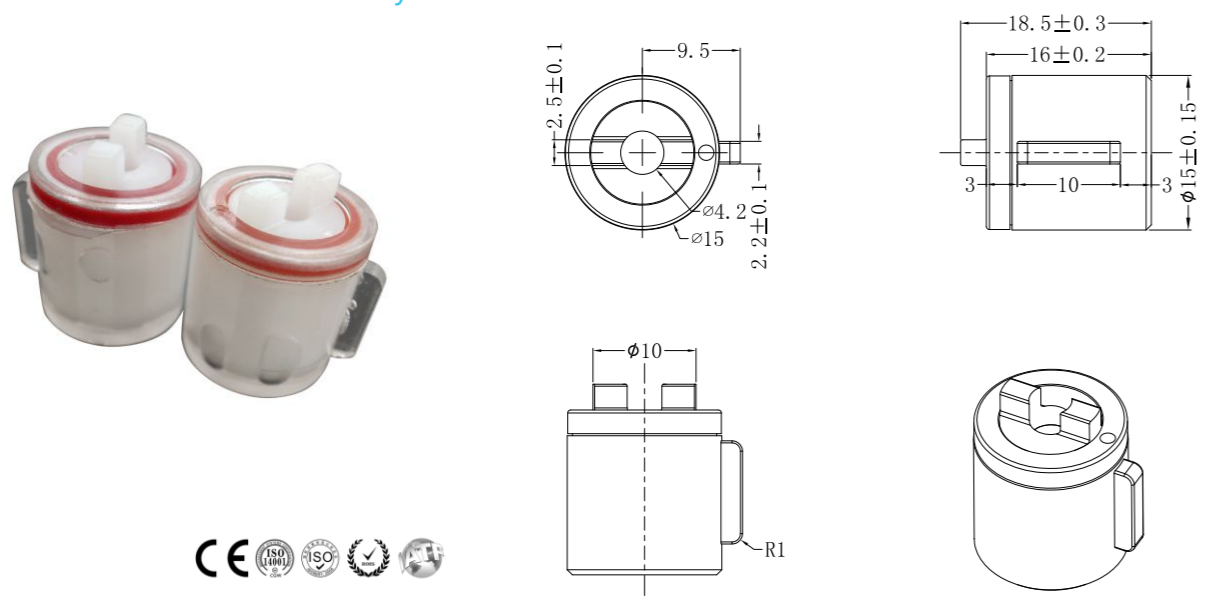
Model: PR-T029A-Two way



Torque 300-2000 GF.CM

Static Storage Temperature	Dynamic Working Temperature	Body Material	Shaft Material	Oil
-40°C-110°C	-5°C-50°C	PC	POM	Silicone Oil

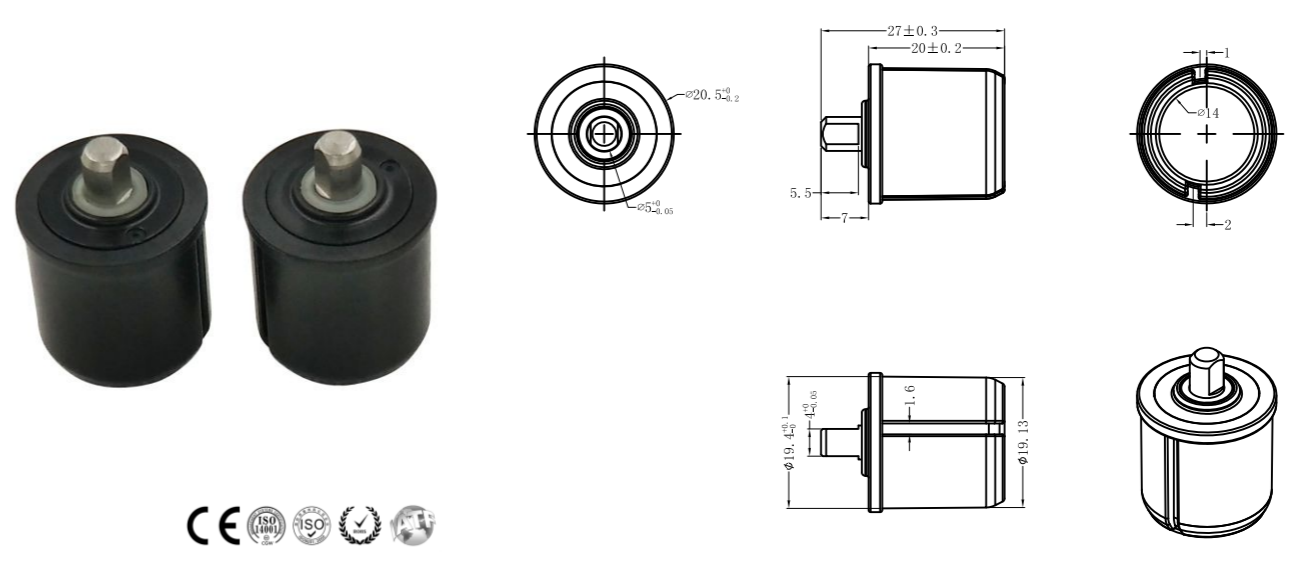
Model: PR-T028A-Two way



Torque 300-4500 GF.CM

Static Storage Temperature	Dynamic Working Temperature	Body Material	Shaft Material	Oil
-40°C-110°C	-5°C-50°C	PC	POM	Silicone Oil

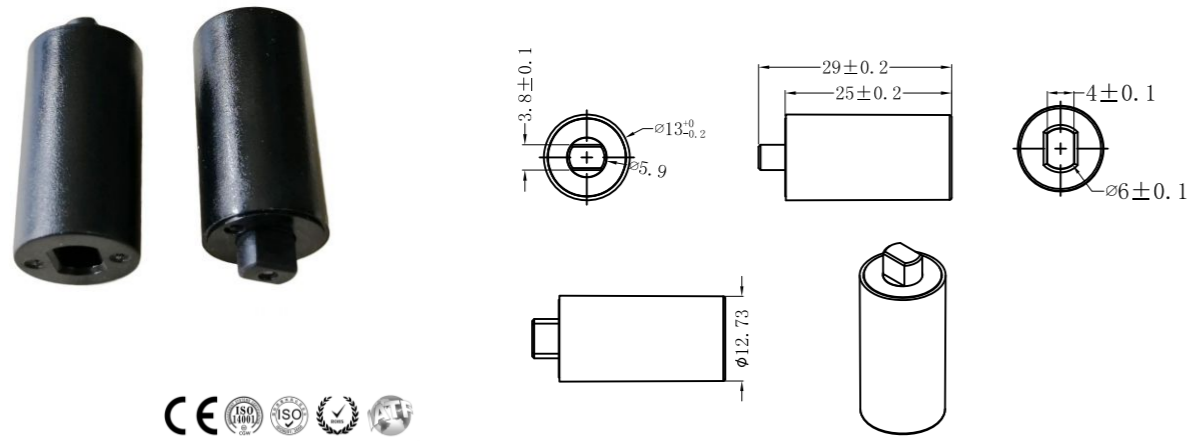
Model: PR-T066A-One/Two way (For curtain, etc)



Torque 50-1000 GF.CM

Static Storage Temperature	Dynamic Working Temperature	Body Material	Shaft Material	Oil
-40°C-110°C	-5°C-50°C	PC	POM	Silicone Oil

Model: PR-T080A-Two way



Torque 650-4500 GF.CM

Static Storage Temperature	Dynamic Working Temperature	Body Material	Shaft Material	Oil
-40°C-110°C	-5°C-50°C	PC	POM	Silicone Oil

Remarks:
Compared with T080A, T080B is of different shaft dimension, 4.1±0.1mm.

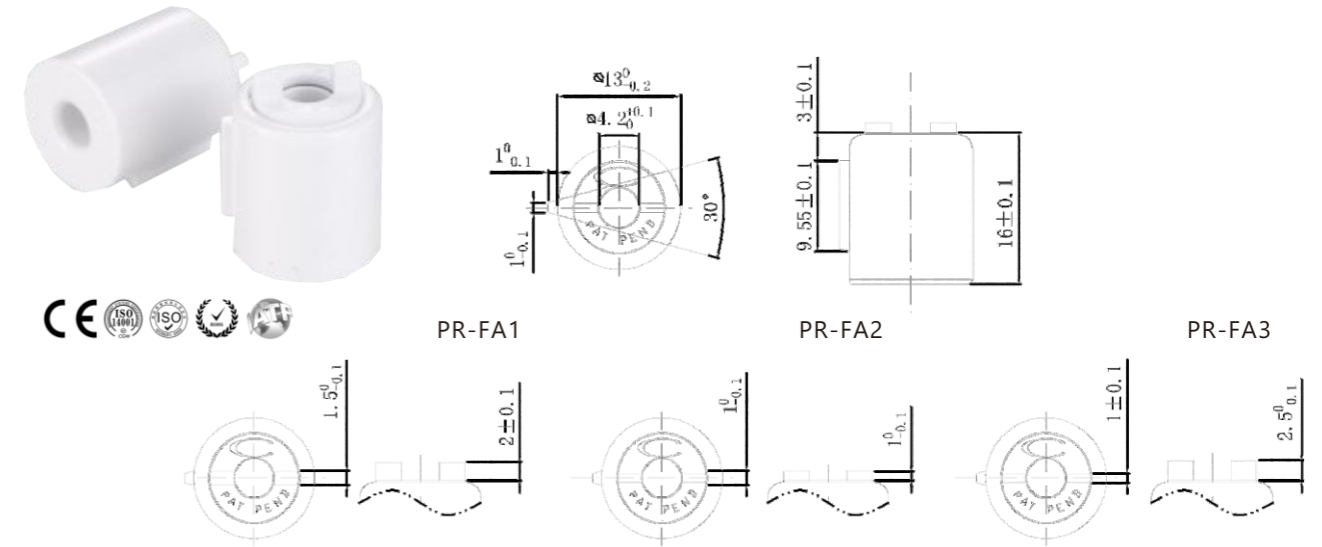
Model: PR-H45-Two way



Torque 340±100 GF.CM

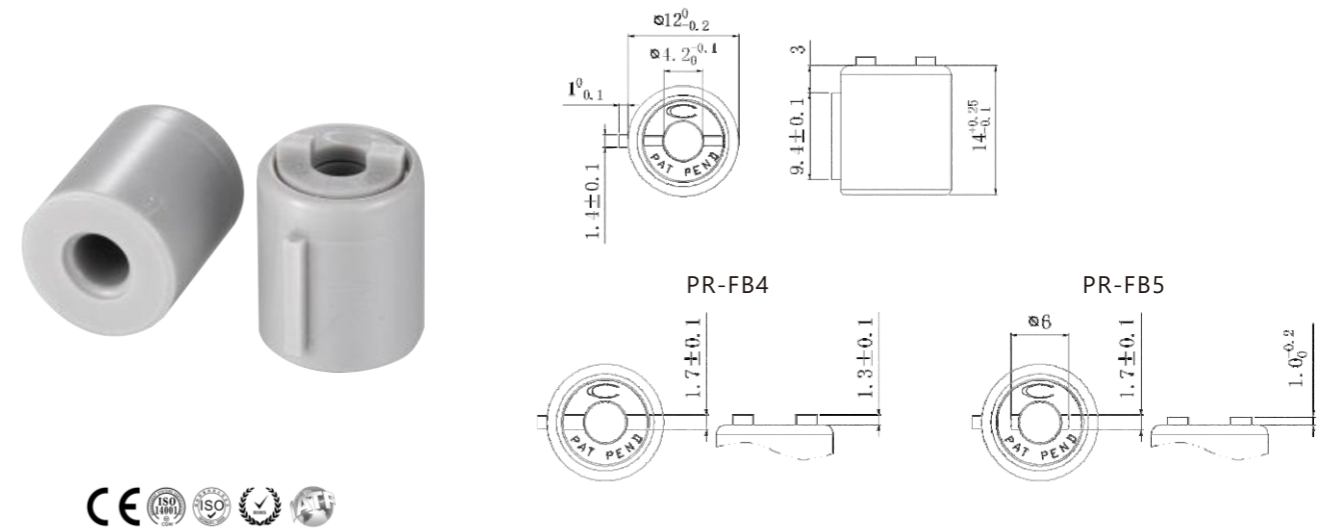
Static Storage Temperature	Dynamic Working Temperature	Body Material	Shaft Material	Oil
-40°C-110°C	-5°C-50°C	PC	POM	Silicone Oil

Model: PR-FA-Two way



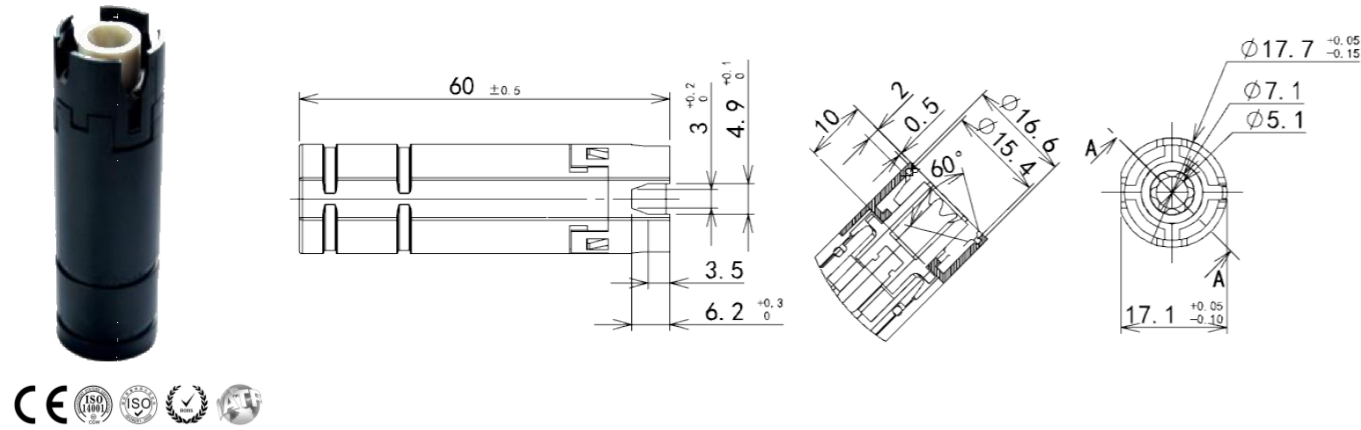
Torque	
At 20 rpm, 20°C	5-10Ncm

Model: PR-FB-Two way

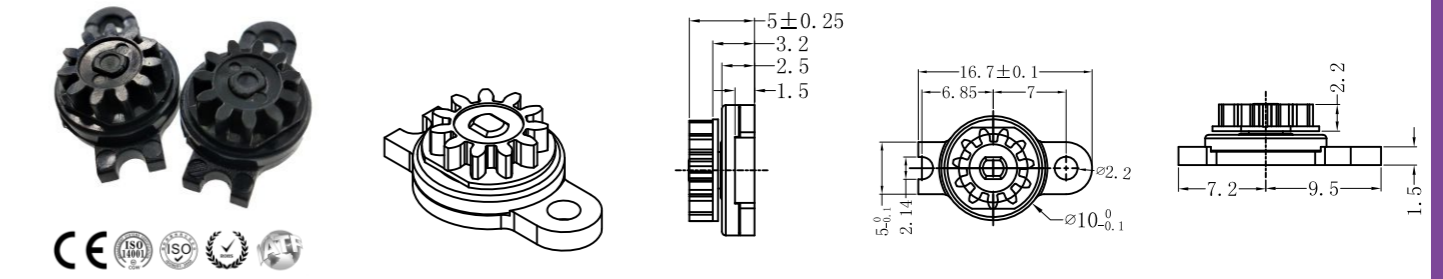


Torque	
At 20 rpm, 20°C	3.4-6.2Ncm

Model: PR-DEC003-Two way (For automotive package tray, etc)



Model: PR-T001A-Two way



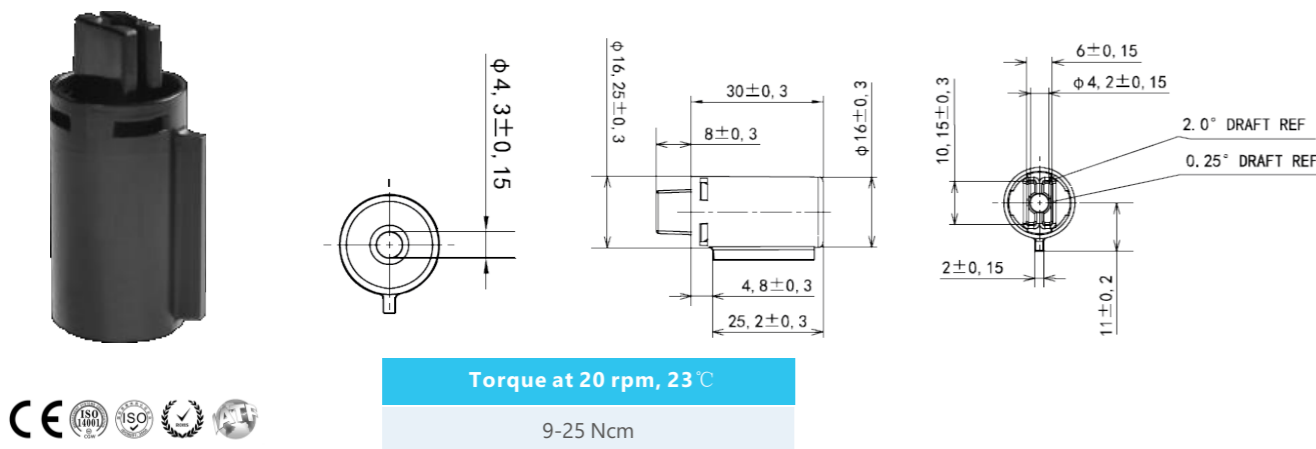
Torque 20-135 GF.CM

Static Storage Temperature	Dynamic Working Temperature	Body Material	Shaft Material	Gear Material	Oil
-40°C-110°C	-5°C-50°C	PC	POM	POM	Silicone Oil

External Diameter	Dividing Dia	Gear No	Modulus	Pressure Angle
7.8	6.6	11	0.6	20°

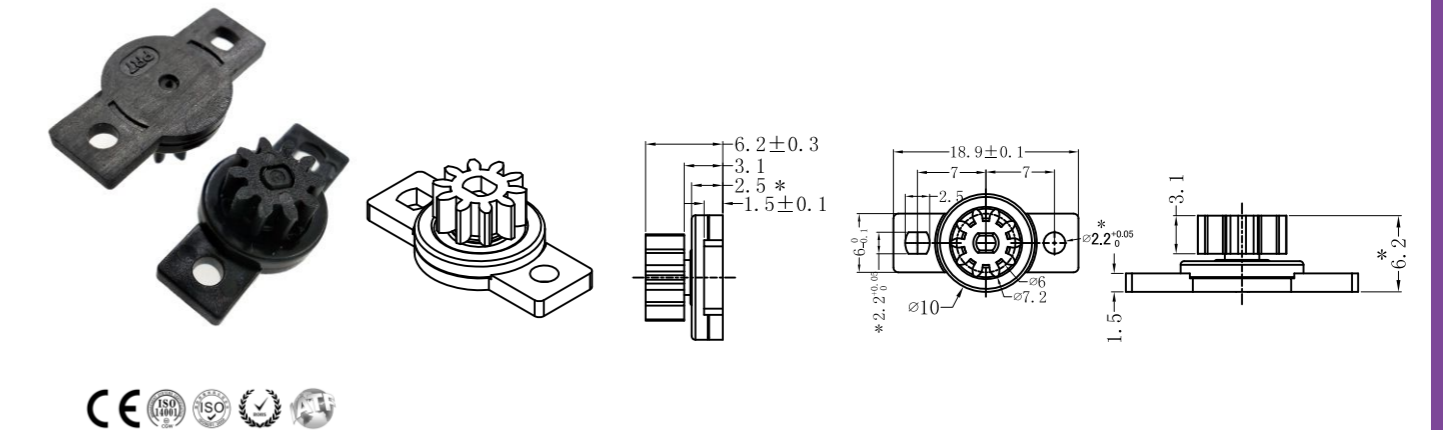
Remarks: T001B has no gear.
Gears are alternative.

Model: PR-DE006-Two way (For automotive arm rest, etc)



Torque at 20 rpm, 23°C
9-25 Ncm

Model: PR-T002A-Two way



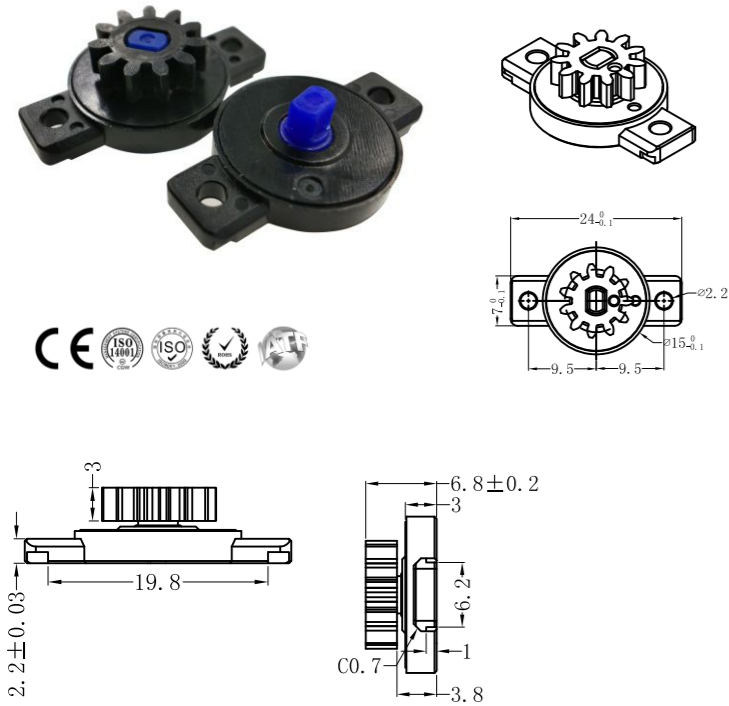
Torque 20-135 GF.CM

Static Storage Temperature	Dynamic Working Temperature	Body Material	Gear Material	Shaft Material	Oil
-40°C-110°C	-5°C-50°C	PC	POM	POM	Silicone Oil

External Diameter	Dividing Dia	Gear No	Modulus	Pressure Angle
7.2	6	10	0.6	20°

Remarks: T002B has no gear.
Gears are alternative.

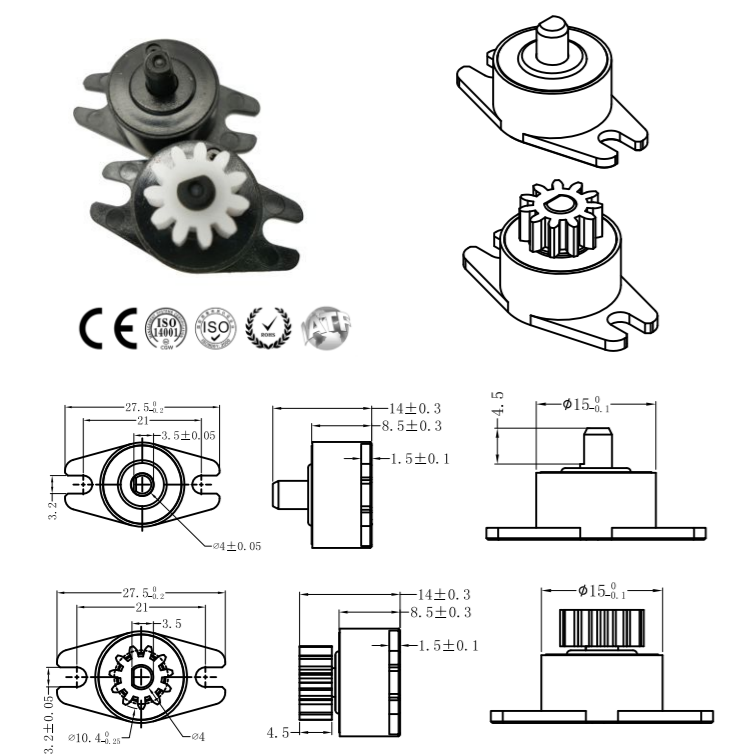
Model: PR-T009-Two way



Torque	30-350 GF.CM
Static Storage Temperature	-40°C-110°C
Dynamic Working Temperature	-5°C-50°C
Body Material	PC
Shaft Material	POM
Gear Material	POM
Oil	Silicone Oil
External Diameter	10.4
Dividing Dia	8.8
Gear No	11
Modulus	0.8
Pressure Angle	20°

Remarks:
Compared with T009, T009C is gearless, and T009E is different with the body height 7.3 ± 0.3mm.

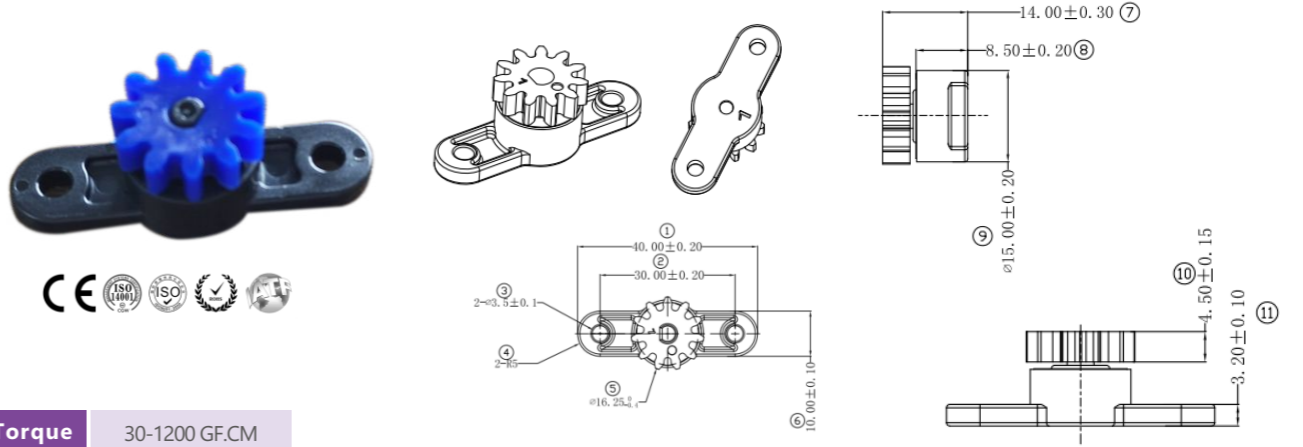
Model: PR-T018A-One/Two way



Torque	30-1200 GF.CM
Static Storage Temperature	-40°C-110°C
Dynamic Working Temperature	-5°C-50°C
Body Material	PC
Shaft Material	POM
Gear Material	POM
Oil	Silicone Oil
External Diameter	10.4
Dividing Dia	8.8
Gear No	11
Modulus	0.8
Pressure Angle	20°

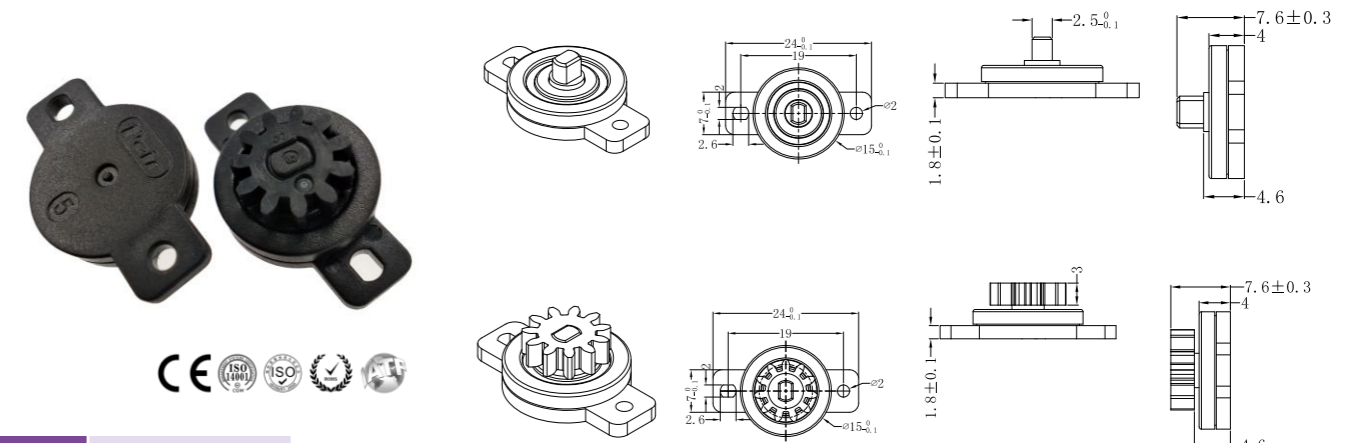
Remarks:
T018B is unidirectional while T018A bidirectional. Gears are alternative.

Model: PR-T018D-One/Two way



Torque	30-1200 GF.CM
Static Storage Temperature	-40°C-110°C
Dynamic Working Temperature	-5°C-50°C
Body Material	PC
Shaft Material	POM
Gear Material	POM
Oil	Silicone Oil
External Diameter	16.25
Dividing Dia	13.75
Gear No	11
Modulus	1.25
Pressure Angle	20°

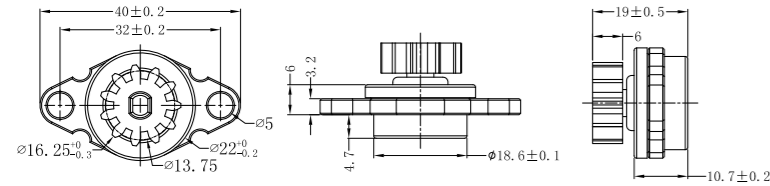
Model: PR-T020A-Two way



Torque	20-400 GF.CM
Static Storage Temperature	-40°C-110°C
Dynamic Working Temperature	-5°C-50°C
Body Material	PC
Shaft Material	POM
Oil	Silicone Oil
External Diameter	10.4
Dividing Dia	8.8
Gear No	11
Modulus	0.8
Pressure Angle	20°

Remarks:
Another Material of POM is available. Gears are alternative.

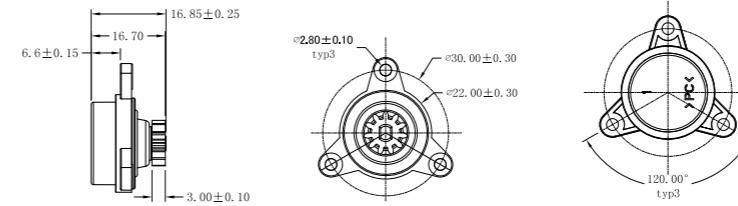
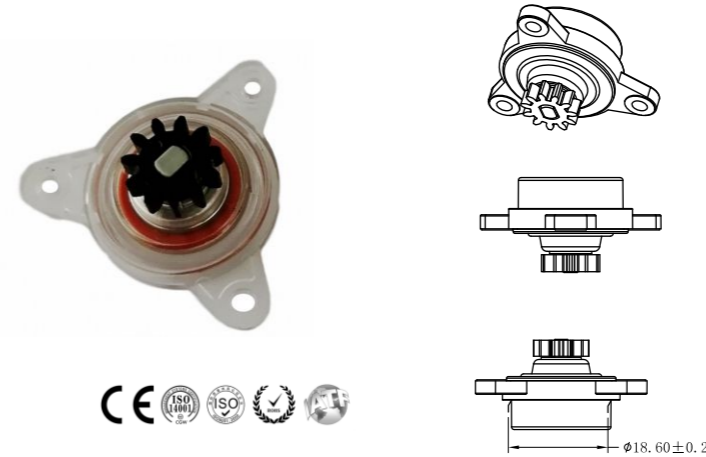
Model: PR-T038A-One/Two way



Torque	300-2000 GF.CM
Static Storage Temperature	-40°C-110°C
Dynamic Working Temperature	-5°C-50°C
Body Material	PC
Shaft Material	POM
Gear Material	POM
Oil	Silicone Oil

External Diameter	16.25
Dividing Dia	13.75
Gear No	11
Modulus	1.25
Pressure Angle	20°

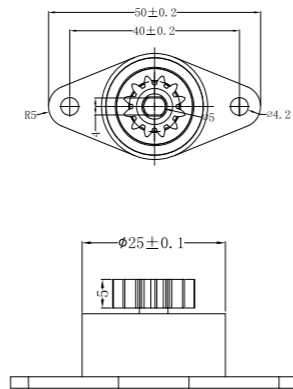
Model: PR-T091-One way (For ice maker, etc)



Torque	350-900 GF.CM
Static Storage Temperature	-40°C-110°C
Dynamic Working Temperature	-20°C-70°C
Body Material	PC
Gear Material	POM
Shaft Material	PA66
Oil	Silicone Oil

External Diameter	10.4
Dividing Dia	8.8
Gear No	11
Modulus	0.8
Pressure Angle	20°

Model: PR-T068A-One/Two way

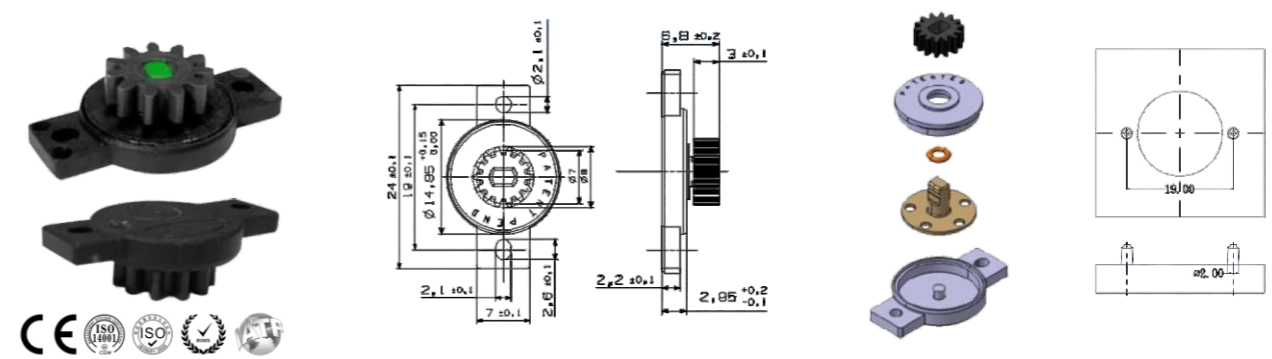


Torque	500-4500 GF.CM
Static Storage Temperature	-40°C-110°C
Dynamic Working Temperature	-5°C-50°C
Body Material	PC
Shaft Material	POM+Stainless steel
Oil	Silicone Oil

External Diameter	Dividing Dia	Gear No	Pressure Angle
14.75	12	12	20°

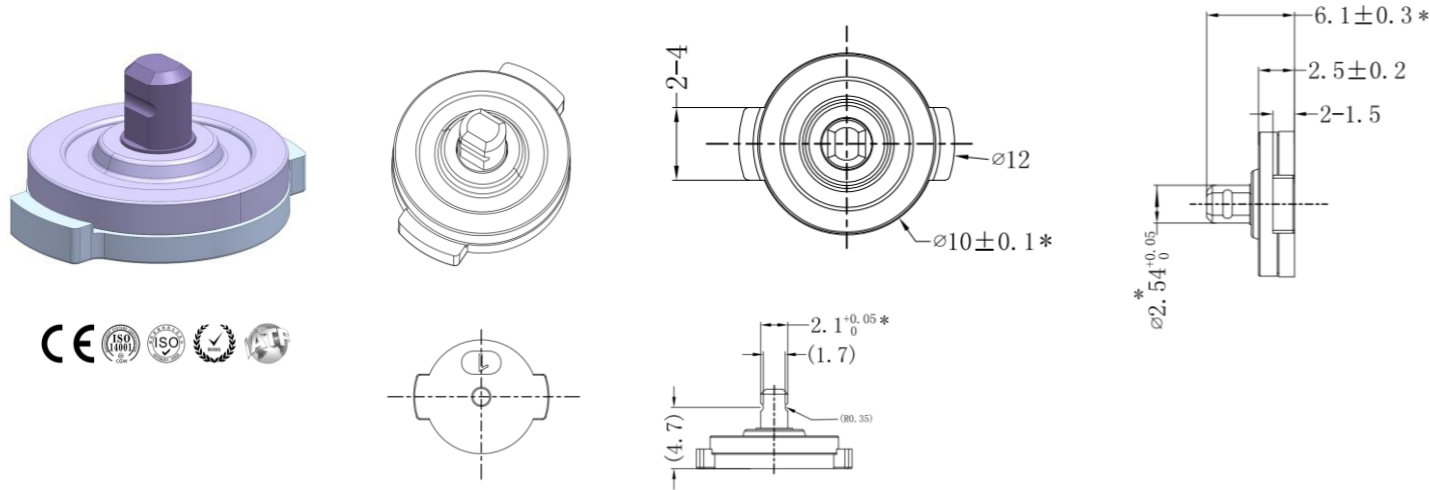
Remarks:
Gears are alternative. T068A is unidirectional while T068B bidirectional.

Model: PR-CA-Two way



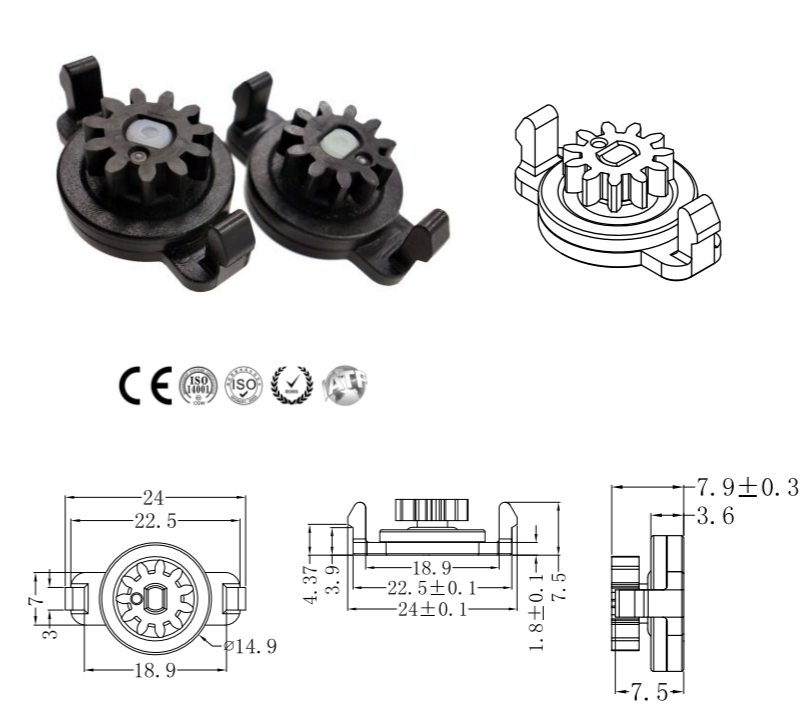
Gear Material	Shaft Material	Case	Cover	Sealing Ring	Oil
POM	POM	PA66GF13	PA66	Silicone Rubber	Silicone Oil

Model: PR-T002C-Two way (For medical equipment, etc)



Torque	20-135 GF.CM		
Static Storage Temperature	Body Material	Shaft Material	Oil
-5°C-50°C	PC	POM	Silicone Oil

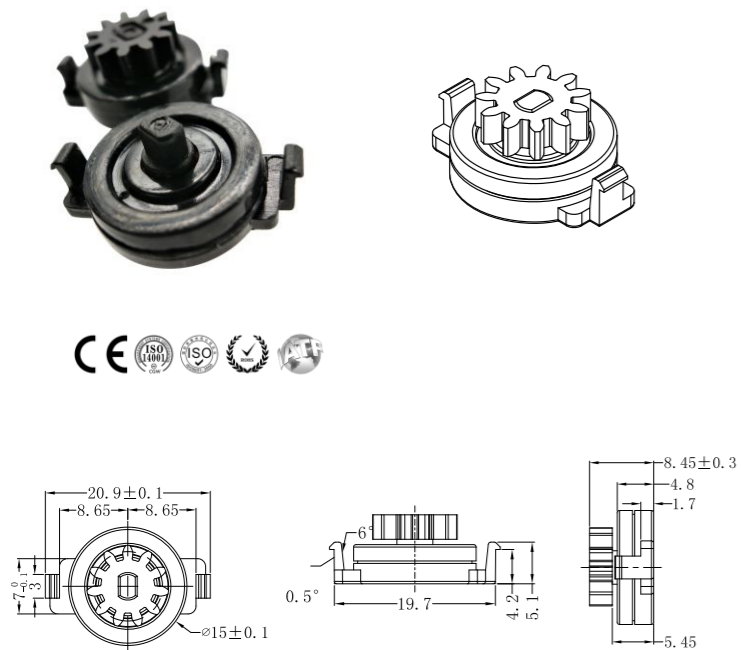
Model: PR-T035-Two way



Torque	50-400 GF.CM
Static Storage Temperature	-40°C-110°C
Dynamic Working Temperature	-5°C-50°C
Body Material	PC
Shaft Material	POM
Oil	Silicone Oil

External Diameter	10.4
Dividing Dia	8.8
Gear No	11
Modulus	0.8
Pressure Angle	20°

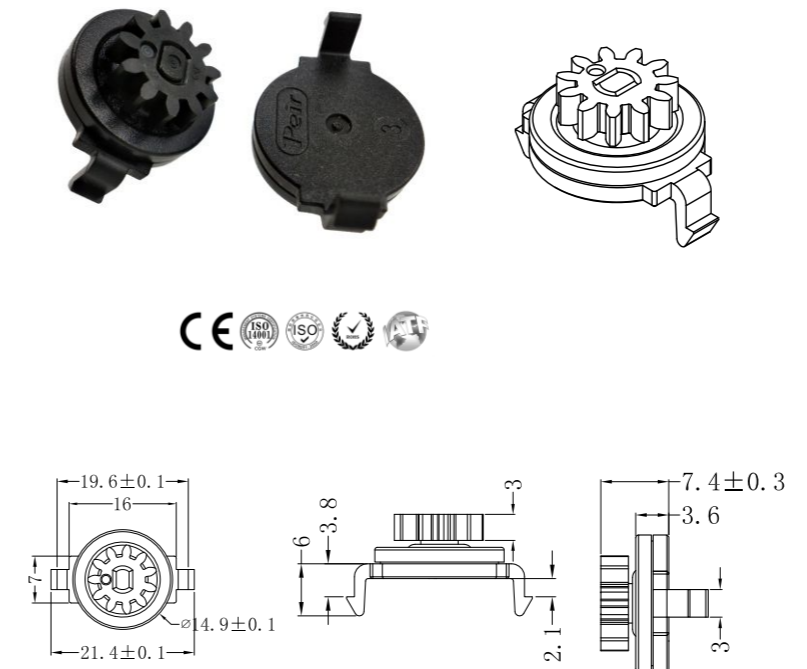
Model: PR-T033A-Two way



Torque	30-400 GF.CM
Static Storage Temperature	-40°C-110°C
Dynamic Working Temperature	-5°C-50°C
Body Material	PC
Shaft Material	POM
Gear Material	POM
Oil	Silicone Oil

External Diameter	10.4
Dividing Dia	8.8
Gear No	11
Modulus	0.8
Pressure Angle	20°

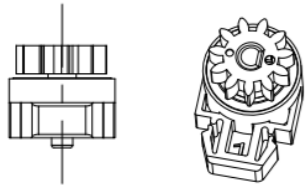
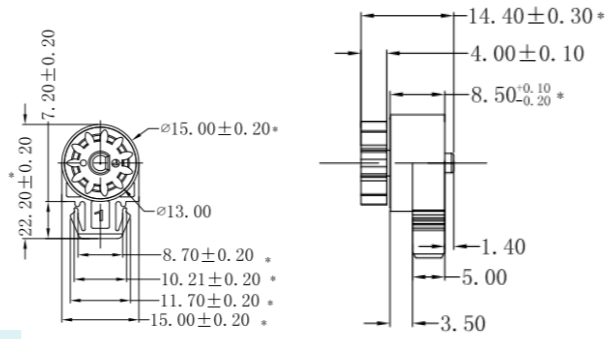
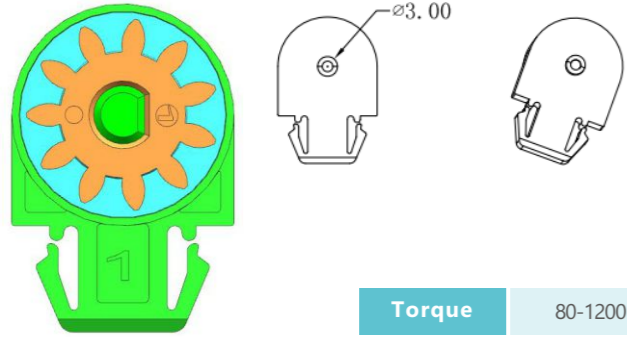
Model: PR-T036-Two way



Torque	30-300 GF.CM
Static Storage Temperature	-40°C-110°C
Dynamic Working Temperature	-5°C-50°C
Body Material	PC
Shaft Material	POM
Gear Material	POM
Oil	Silicone Oil

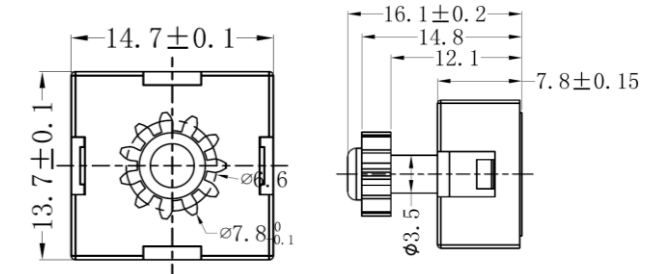
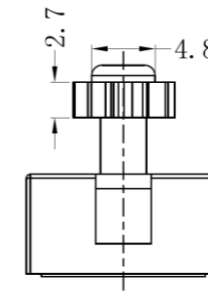
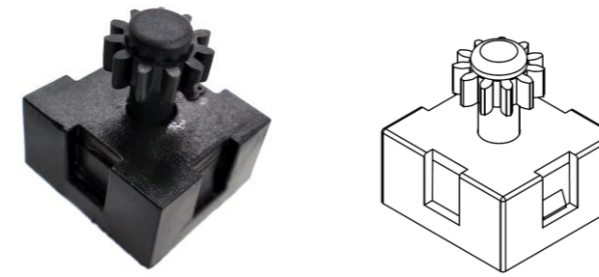
External Diameter	10.4
Dividing Dia	8.8
Gear No	11
Modulus	0.8
Pressure Angle	20°

Model: PR-PR-T089A-One/Two way (For kettle, etc)



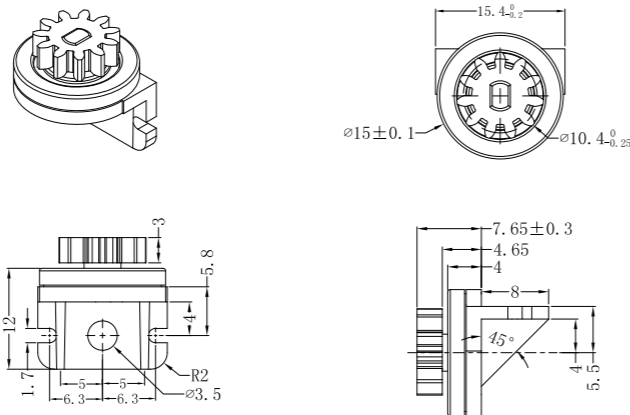
Torque	80-1200 GF.CM		
Static Storage Temperature	-40°C - 110°C	External Diameter	13
Dynamic Working Temperature	-5°C - 50°C	Dividing Dia	11
Oil	Silicone Oil	Gear No	11
Body Material	PC	Modulus	1.0
Shaft Material	POM	Pressure Angel	20°
Gear Material	POM		

Model: PR-T096A-Two way (For kettle, etc)



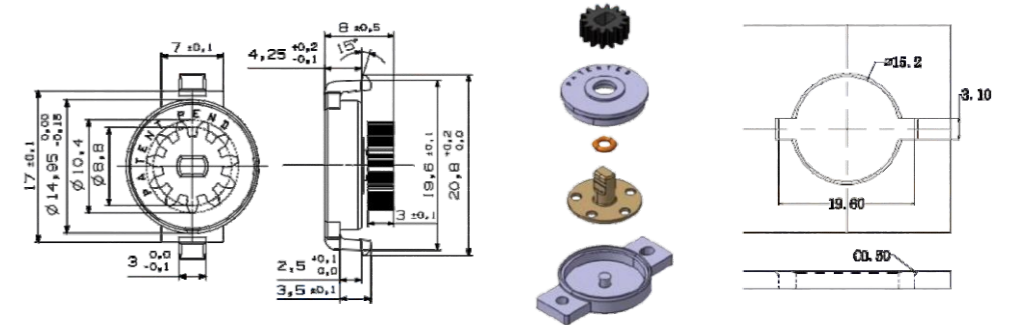
Torque	30-100 GF.CM		
Static Storage Temperature	-40°C - 110°C	Body Material	POM
Dynamic Working Temperature	-5°C - 50°C	Gear Material	POM
Oil	Silicone Oil	Shaft Material	POM

Model: PR-T090A-Two way



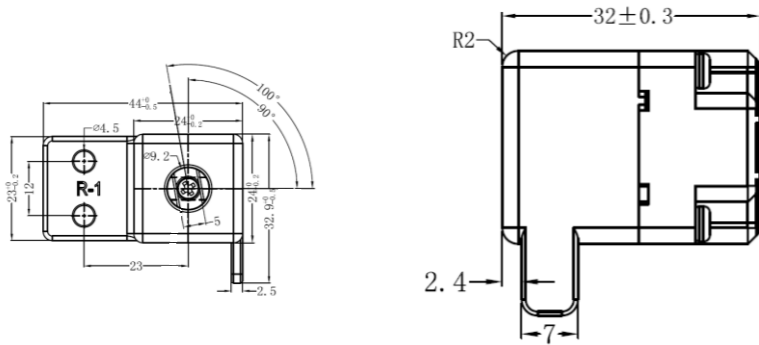
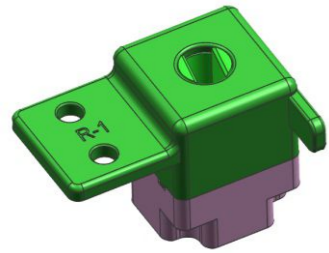
Torque	30-250 GF.CM				
Static Storage Temperature	-40°C-110°C	Dynamic Working Temperature	-5°C-50°C	Body Material	PC
External Diameter	10.4	Dividing Dia	8.8	Gear No	11
		Modulus	0.8	Pressure Angle	20°
		Shaft Material	POM	Oil	Silicone Oil

Model: PR-CD-Two way

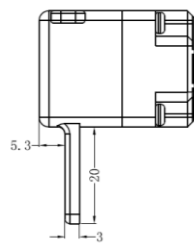
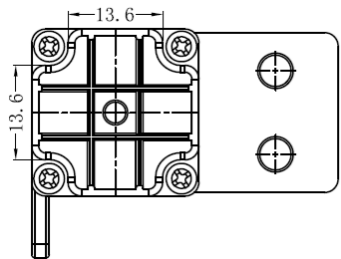


Gear Material	Shaft Material	Case	Cover	Sealing Ring	Oil
POM	POM	PA66GF13	PA66	Silicone Rubber	Silicone Oil

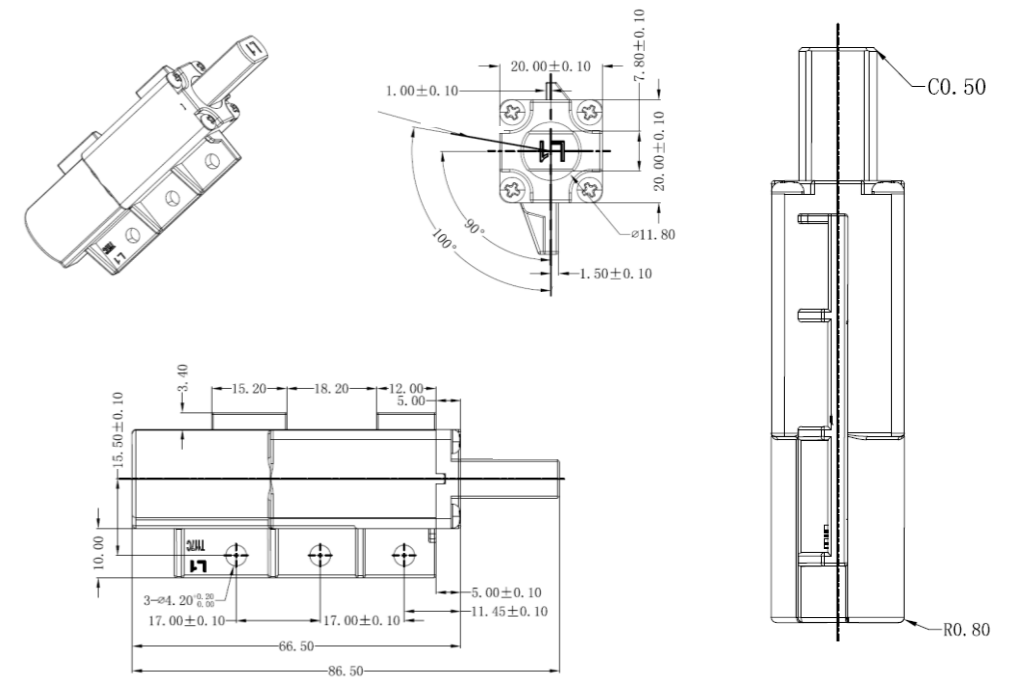
Model: PR-T093A-One way (For refrigerator, etc)



Torque	15-30KGF.CM
Max Opening Angle	100°
Static Storage Temperature	-40°C - 110°C
Dynamic Working Temperature	-5°C - 50°C
Body Material	PA66
Shaft Matetial	PA66
Oil	Silicone Oil



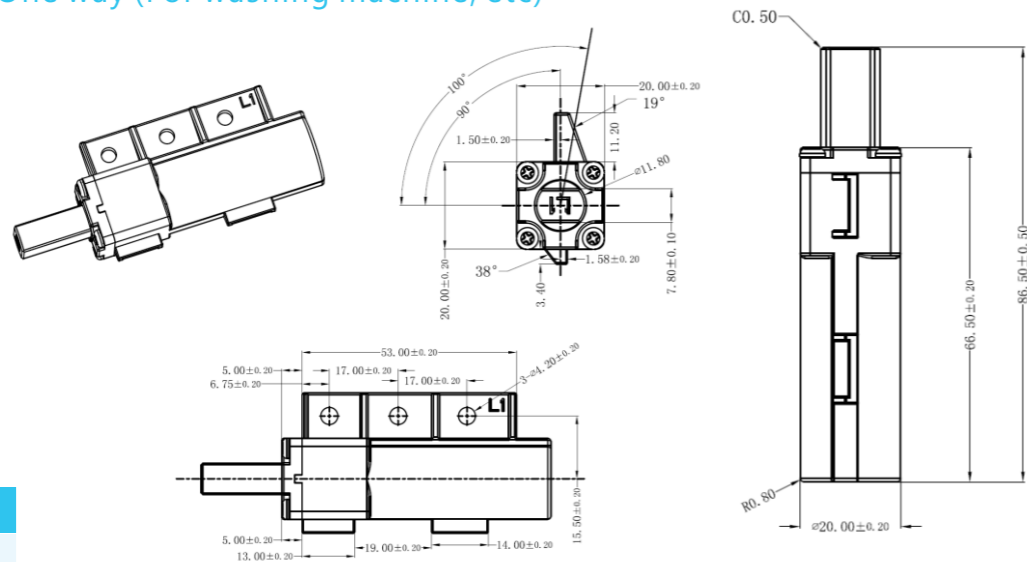
Model: PR-T117C-One way (Can stop at any angle)



Torque	40-90 KGF.CM
---------------	--------------

Max Opening Angle	Static Storage Temperature	Body Material	Shaft Material	Hovering Medium
100°	-20°C - 70°C	Zinc Alloy	Zinc Alloy	Spring(SWP-B)

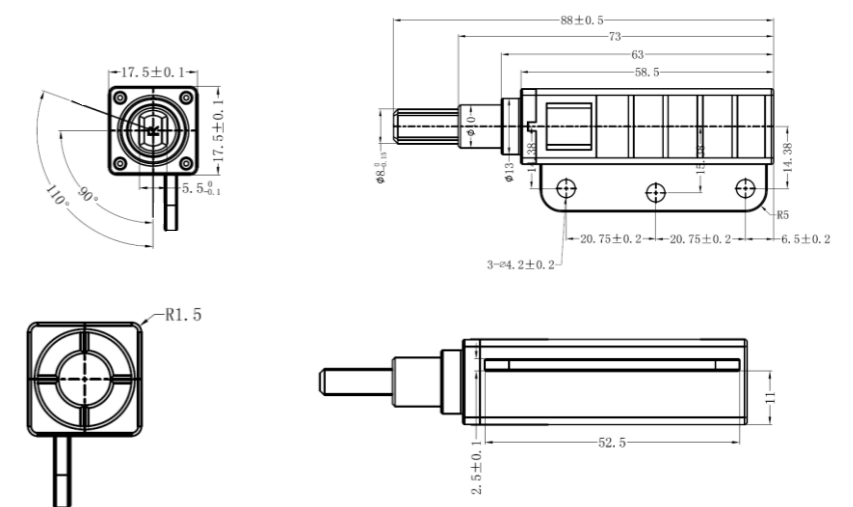
Model: PR-T117A-One way (For washing machine, etc)



Torque	40-90 KGF.CM
---------------	--------------

Max Opening Angle	Static Storage Temperature	Body Material	Shaft Material	Oil
100°	-20°C - 70°C	Zinc Alloy	Zinc Alloy	Silicone Oil

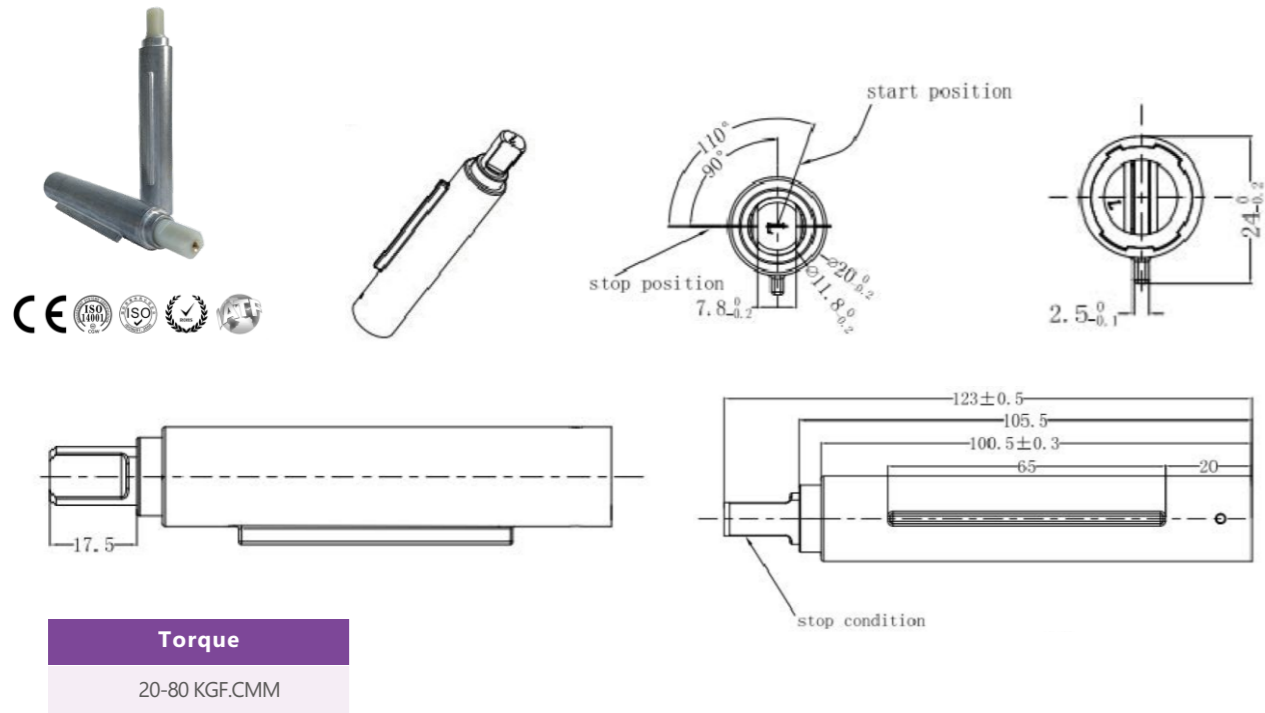
Model: PR-T118A-One way



Torque	10-50 KGF.CM
---------------	--------------

Max Opening Angle	Static Storage Temperature	Dynamic Working Temperature	Body Material	Shaft Material	Oil
110°	-40°C - 110°C	-5°C - 50°C	PA66 - GF40	Zinc Alloy	Silicone Oil

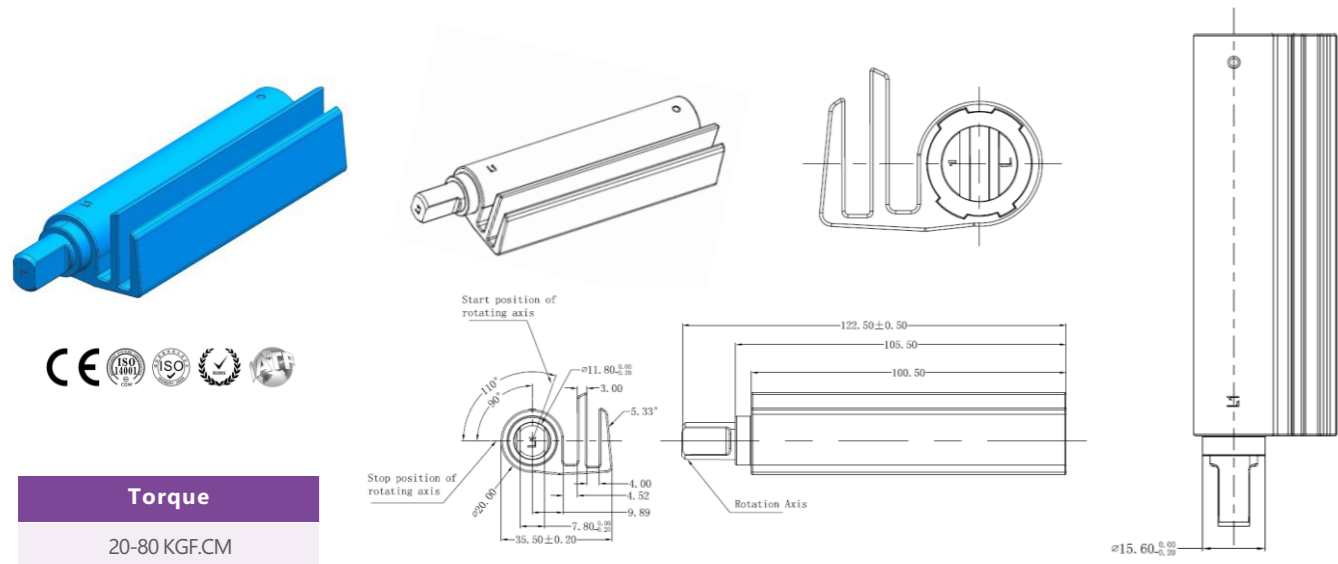
Model: PR-T115A-One way



Torque
20-80 KGF.CMM

Remarks: For T115 series dampers can also apply in high temperature environment (up to 120 degree), by using heat-resisting material. Such as in cooking ranges, ovens, etc.

Model: PR-T115B-One way (For cooking range, etc)

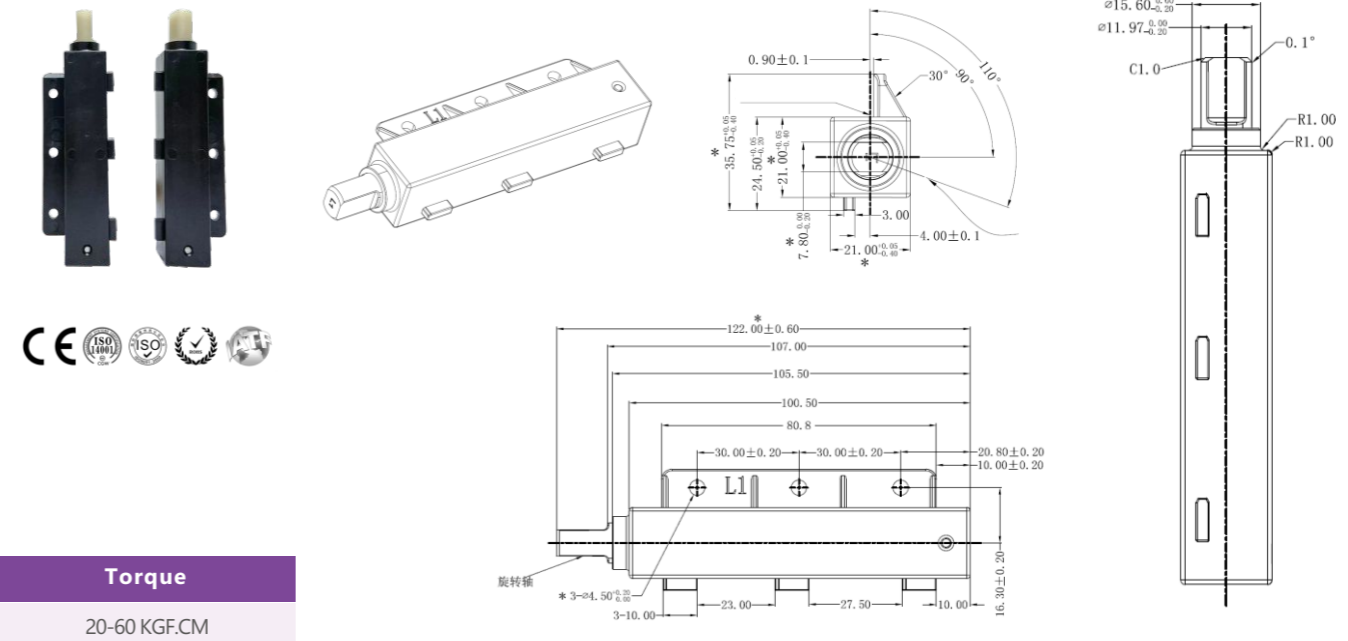


Torque
20-80 KGF.CM

Max Opening Angle	Min Opening Angle	Static Storage Temperature	Body Material	Shaft Material	Damping Medium
110°	≤20°	-20°C - 60°C	Zinc Alloy	PA66 - GF40	Silicone Oil and Spring

Remarks: For T115 series dampers can also apply in high temperature environment (up to 120 degree), by using heat-resisting material. Such as in cooking ranges, ovens, etc.

Model: PR-T115G-One way

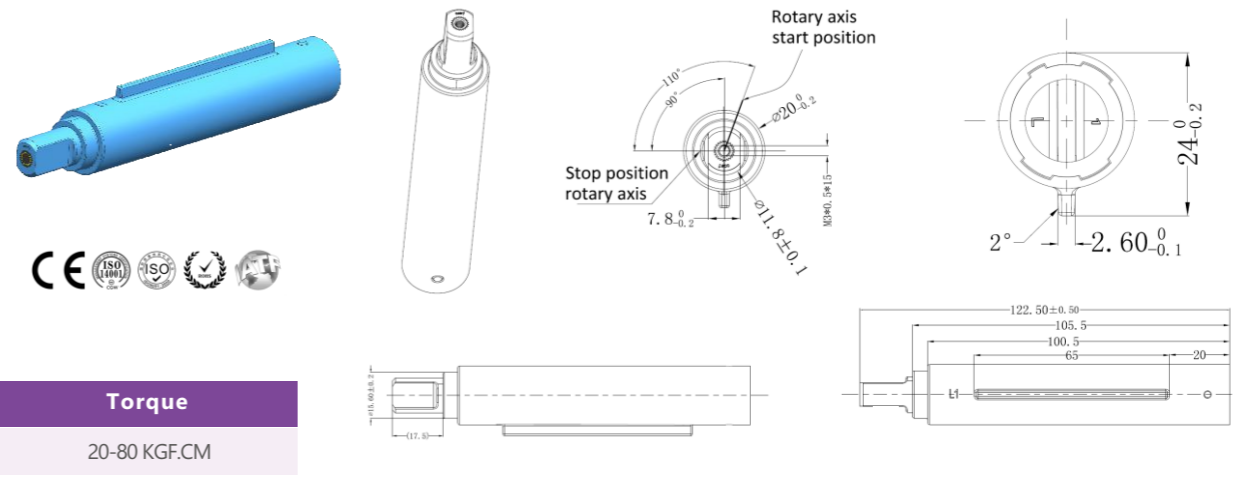


Torque
20-60 KGF.CM

Max Opening Angle	Min Opening Angle	Static Storage Temperature	Body Material	Shaft Material	Damping Medium
110°	≤20°	-20°C - 60°C	POM	PA66 - GF40	Silicone Oil and Spring

Remarks: For T115 series dampers can also apply in high temperature environment (up to 120 degree), by using heat-resisting material. Such as in cooking ranges, ovens, etc.

Model: PR-T115H-One way

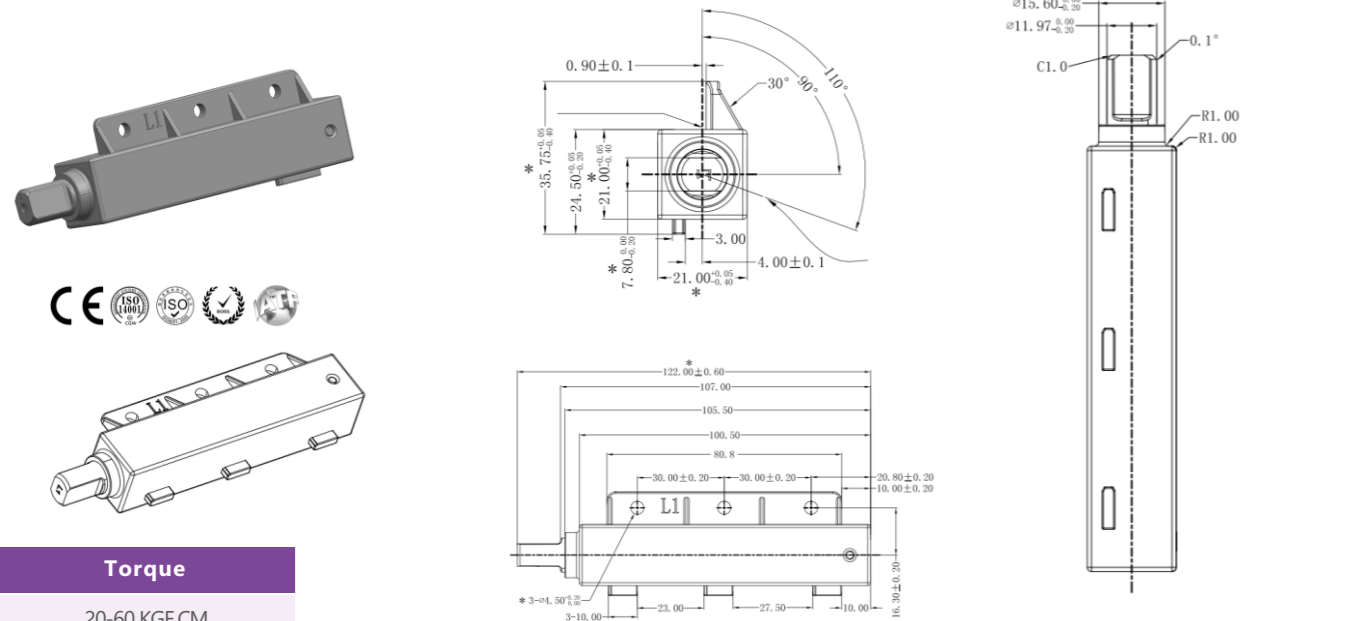


Torque
20-80 KGF.CM

Max Opening Angle	Static Storage Temperature	Body Material	Shaft Material	Damping Medium
110°C	-5°C - 50°C	Zinc Alloy	PA66 - GF40	Silicone Oil and Spring

Remarks: For T115 series dampers can also apply in high temperature environment (up to 120 degree), by using heat-resisting material. Such as in cooking ranges, ovens, etc.

Model: PR-T115M-One way

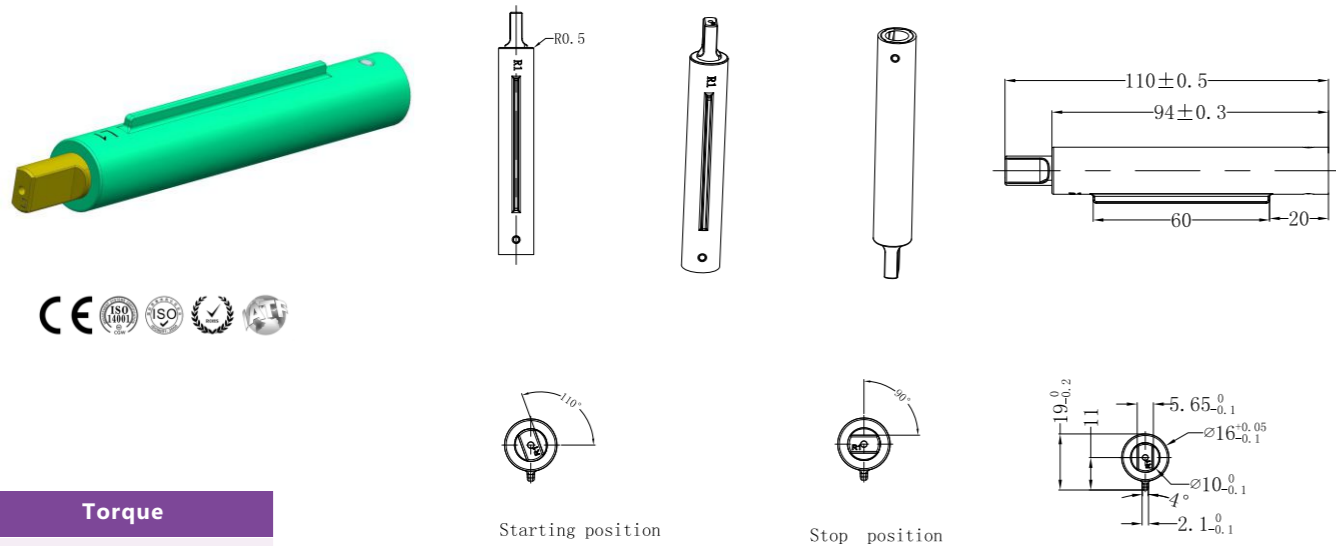


Torque
20-60 KGF.CM

Max Opening Angle	Min Opening Angle	Static Storage Temperature	Body Material	Shaft Material	Damping Medium
110°	≤20°	-20°C - 60°C	POM	PA66 - GF40	Silicone Oil and Spring

Remarks: For T115 series dampers can also apply in high temperature environment (up to 120 degree), by using heat-resisting material. Such as in cooking ranges, ovens, etc.

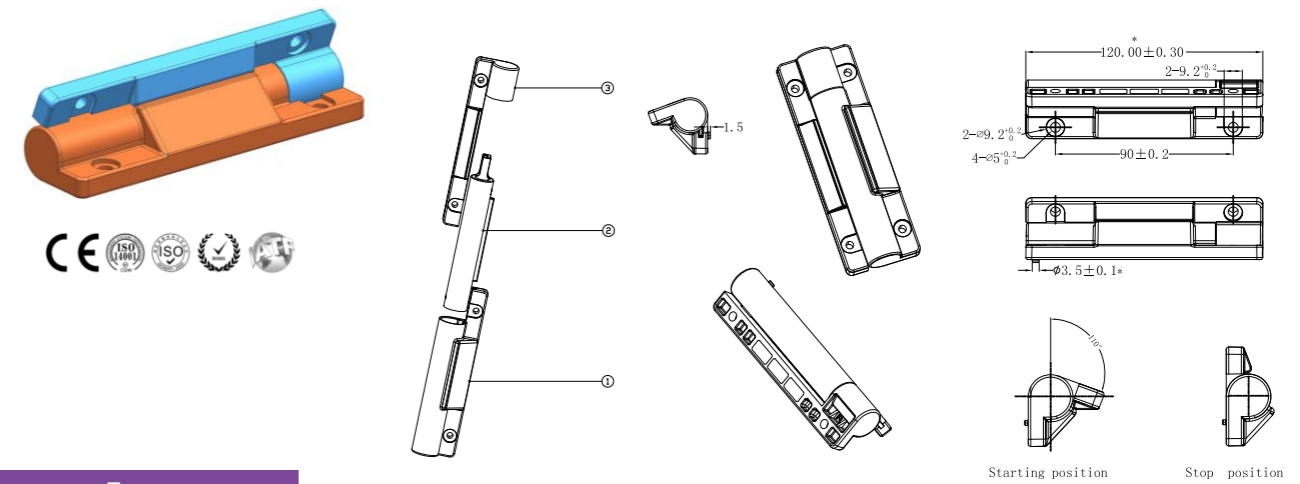
Model: PR-T116A-One way (For dishwasher, etc)



Torque
5-50 KGF.CM

Max Opening Angle	Min Opening Angle	Static Storage Temperature	Body Material	Shaft Material	Damping Medium
110°	≤25°	-20°C - 60°C	Zinc alloy	PA66 - GF40	Silicone Oil and Spring

Model: PR-T116B-One way (For refrigerator, etc)



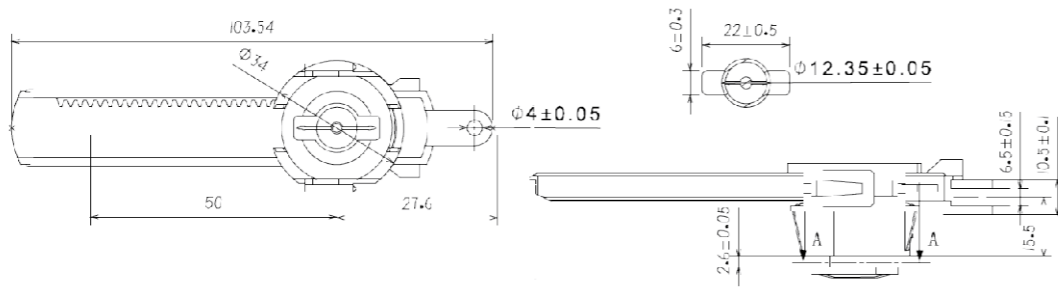
Torque
5-50 KGF.CM

Max Opening Angle	Min Opening Angle	Static Storage Temperature	Body Material	Shaft Material	Damping Medium
110°	≤25°	-20°C - 60°C	Zinc alloy	PA66 - GF40	Silicone Oil and Spring



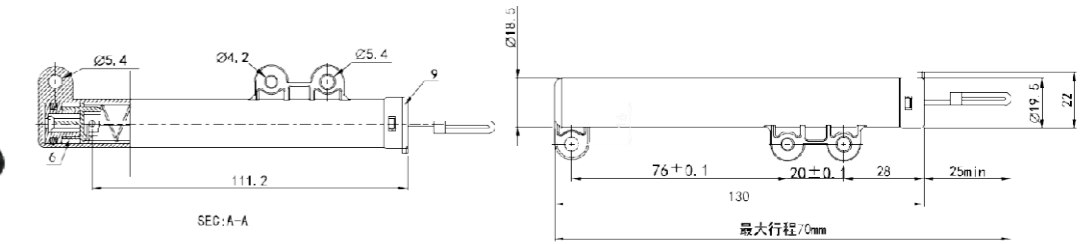
The high torque series damper especially for heavy lid, which require high torque. This series damper can provide a open force which can make the lid easy open, can provide a good user experience.

Model: PR-DH009-Rack damper (For automotive glove compartment, etc)



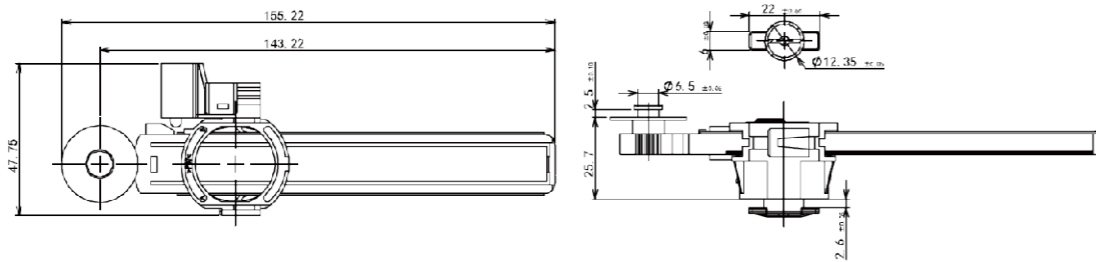
Torque at 20 rpm, 23°C 2.2-12Ncm

Model: PR-DIB001-Air damper (For automotive glove compartment, etc)



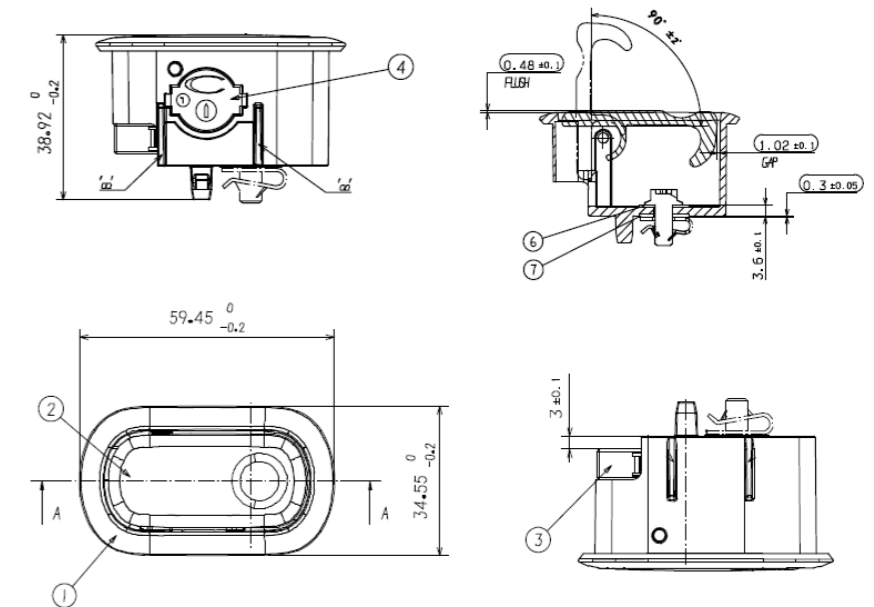
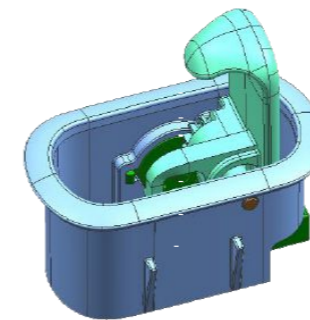
Material	Body	Piston base	Gasket	Sealing ring	Air valve piece	Cap	Spring	Drawstring
	POM	POM	EPDM	FKM	Tin bronze	POM	SWP-B	PES
Static Storage Temperature		Force at 23°C 55mm, running time is 2.4'S-0.4'S						
-30°C - 90°C		13N - 30N						

Model: PR-DH010-Rack damper (For automotive glove compartment, etc)

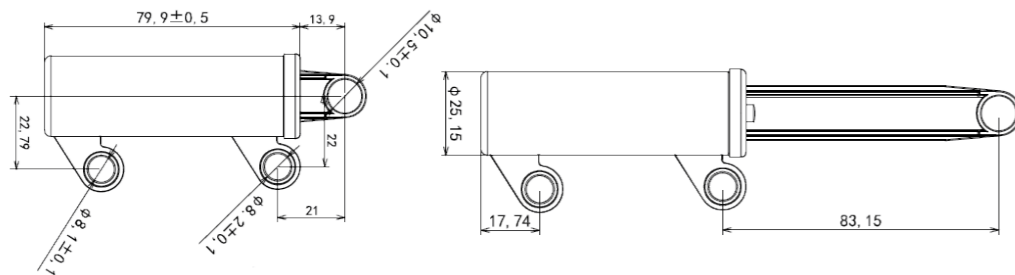


Torque at 20 rpm, 23°C 2.2-12Ncm

Coat hook



Model: PR-DI001-Air damper (For automotive glove compartment, etc)



Body Material	Pull rod Material	Cap Material	Static Storage Temperature
POM	POM	PA66	-30°C-85°C
Opening time at 1.27Kg, 50mm		1.5S±0.4	

Peir

www.peirdamper.com



Dongguan/Shanghai/Yangzhou,
China



HongKong/Shenzhen, China

Rep



Greater Noida, India

Rep



São paulo, Brazil

Rep



Chihuahua Mexico

Rep



North Carolina, USA

