

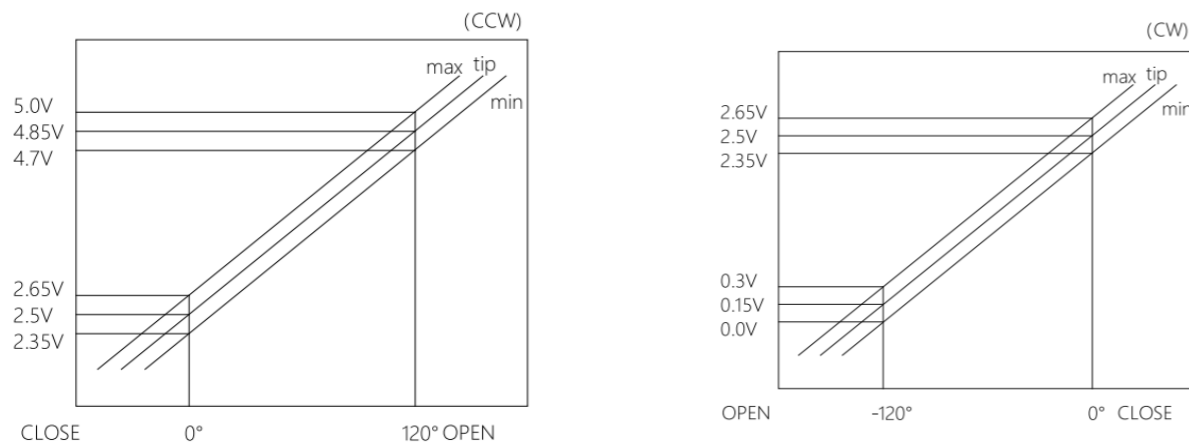
DRIVING MOTOR

The driving motor is mainly composed of the gearbox, micromotor, damping overload clutch, angle sensor, and other parts.

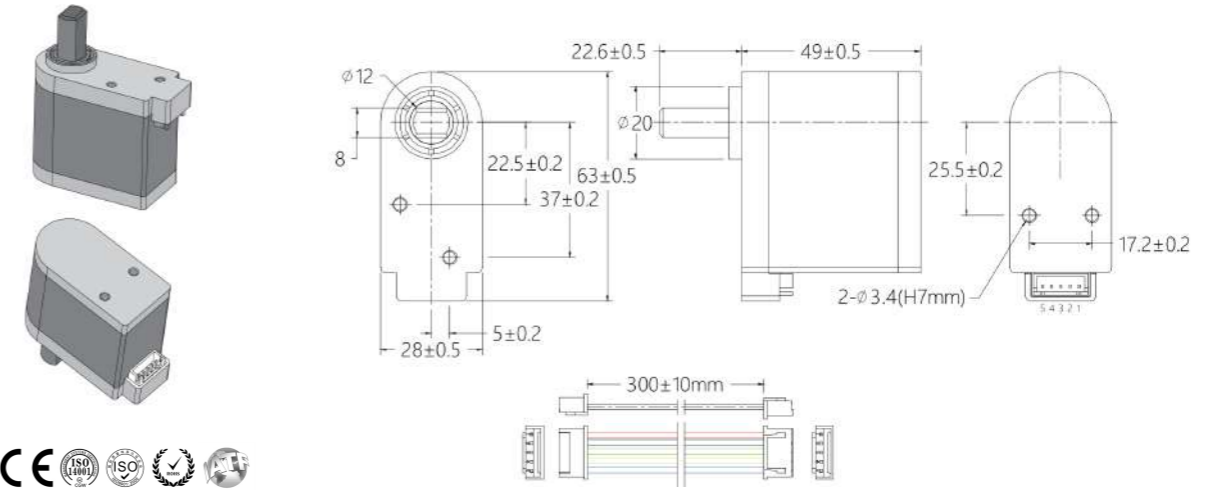
The micromotor spindle reduces and increases the torque through the multistage gear to output the rotational torque to the spindle.

When the rotating torque of the rotating shaft exceeds the blocking torque of the motor the damping overload clutch disengages to realize the mechanism protection;

Equipped with an angle sensor, through the voltage signal output rotation axis position electrical signal, micromotor start and stop control.

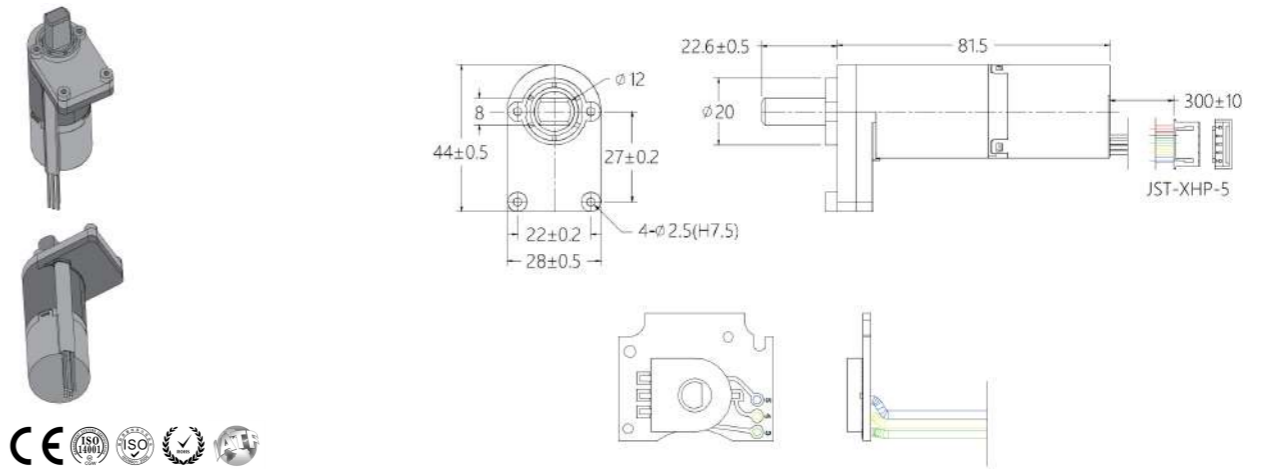


JP-MD28A-One way(28*63mm)



Torque	32-50 KGF.CM				
Reduction ratio	Rated voltage	Torque	Vibration	Plugging current	Max Opening Angle
864.77	DC12V	>3.2N.m(5N.m (max))	52dBmax@30cm	2.5A max	120°±5
Opening time	Dynamic Working Temperature	Motor reliability	Manual reliability		
3.5±0.5s	-10°C-50°C	110,000cycles	1,000cycles		

JP-MD28B-One way(28*44mm)



Torque	32-50 KGF.CM				
Reduction ratio	Rated voltage	Torque	Vibration	Plugging current	Max Opening Angle
877.8	DC12V	>3.2N.m(5N.m (max))	52dBmax@30cm	2.5A max	120°±5
Opening time	Dynamic Working Temperature	Motor reliability	Manual reliability		
3.5±0.5s	-10°C-50°C	110,000cycles	1,000cycles		